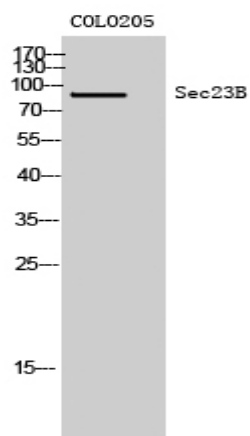


Sec23B Polyclonal Antibody

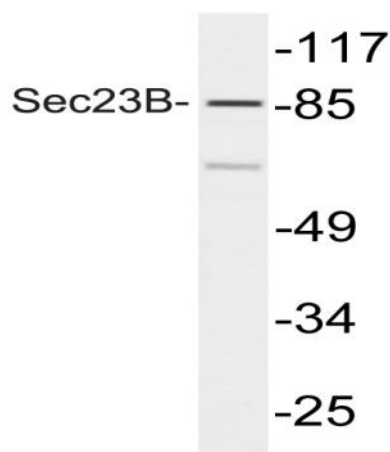
Catalog No :	YT4229
Reactivity :	Human;Mouse
Applications :	WB;ELISA;IHC
Target :	Sec23B
Fields :	>>Protein processing in endoplasmic reticulum
Gene Name :	SEC23B
Protein Name :	Protein transport protein Sec23B
Human Gene Id :	10483
Human Swiss Prot No :	Q15437
Mouse Gene Id :	27054
Mouse Swiss Prot No :	Q9D662
Immunogen :	The antiserum was produced against synthesized peptide derived from human Sec23B. AA range:495-544
Specificity :	Sec23B Polyclonal Antibody detects endogenous levels of Sec23B protein.
Formulation :	Liquid in PBS containing 50% glycerol, 0.5% BSA and 0.02% sodium azide.
Source :	Polyclonal, Rabbit,IgG
Dilution :	WB 1:500-2000;IHC 1:50-300; ELISA 2000-20000
Purification :	The antibody was affinity-purified from rabbit antiserum by affinity-chromatography using epitope-specific immunogen.
Concentration :	1 mg/ml

Storage Stability :	-15 °C to -25 °C/1 year(Do not lower than -25 °C)
Observed Band :	86kD
Background :	The protein encoded by this gene is a member of the SEC23 subfamily of the SEC23/SEC24 family, which is involved in vesicle trafficking. The encoded protein has similarity to yeast Sec23p component of COPII. COPII is the coat protein complex responsible for vesicle budding from the ER. The function of this gene product has been implicated in cargo selection and concentration. Multiple alternatively spliced transcript variants have been identified in this gene. [provided by RefSeq, Feb 2010],
Function :	function:Component of the COPII coat, that covers ER-derived vesicles involved in transport from the endoplasmic reticulum to the Golgi apparatus. COPII acts in the cytoplasm to promote the transport of secretory, plasma membrane, and vacuolar proteins from the endoplasmic reticulum to the Golgi complex.,similarity:Belongs to the SEC23/SEC24 family. SEC23 subfamily.,subunit:COPII is composed of at least five proteins: the Sec23/24 complex, the Sec13/31 complex and Sar1.,
Subcellular Location :	Cytoplasmic vesicle, COPII-coated vesicle membrane ; Peripheral membrane protein ; Cytoplasmic side . Endoplasmic reticulum membrane ; Peripheral membrane protein ; Cytoplasmic side . Cytoplasm, cytosol .
Expression :	Ubiquitously expressed.
Sort :	16202
No4 :	1
Host :	Rabbit
Modifications :	Unmodified

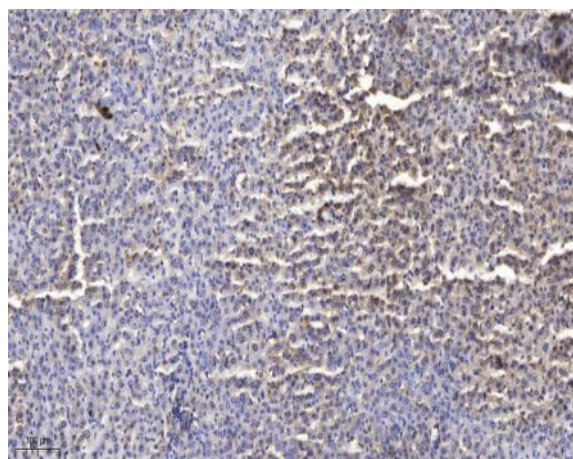
Products Images



Western Blot analysis of COLO205 cells using Sec23B Polyclonal Antibody



Western blot analysis of lysate from COLO205 cells, using Sec23B antibody.



Immunohistochemical analysis of paraffin-embedded human liver cancer. 1, Antibody was diluted at 1:200(4° overnight). 2, Tris-EDTA,pH9.0 was used for antigen retrieval. 3,Secondary antibody was diluted at 1:200(room temperature, 45min).