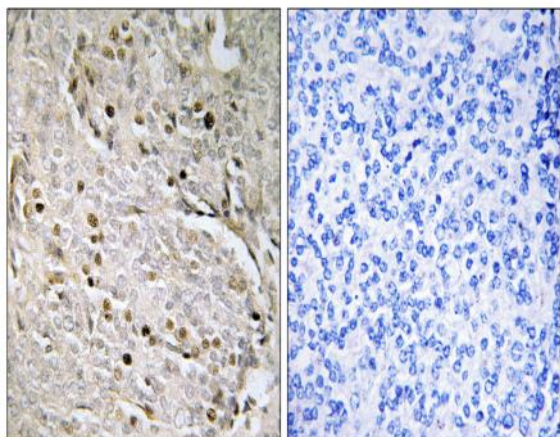


POTE-8 Polyclonal Antibody

Catalog No :	YT3824
Reactivity :	Human
Applications :	IHC;IF;ELISA
Target :	POTE-8
Gene Name :	POTEA
Protein Name :	POTE ankyrin domain family member A
Human Gene Id :	340441
Human Swiss Prot No :	Q6S8J7
Immunogen :	The antiserum was produced against synthesized peptide derived from human POTEA. AA range:375-424
Specificity :	POTE-8 Polyclonal Antibody detects endogenous levels of POTE-8 protein.
Formulation :	Liquid in PBS containing 50% glycerol, 0.5% BSA and 0.02% sodium azide.
Source :	Polyclonal, Rabbit,IgG
Dilution :	IHC 1:100 - 1:300. ELISA: 1:5000.. IF 1:50-200
Purification :	The antibody was affinity-purified from rabbit antiserum by affinity-chromatography using epitope-specific immunogen.
Concentration :	1 mg/ml
Storage Stability :	-15°C to -25°C/1 year(Do not lower than -25°C)
Molecularweight :	56kD
Background :	similarity:Belongs to the POTE family.,similarity:Contains 5 ANK repeats.,

Function :	<u>similarity:Belongs to the POTE family.,similarity:Contains 5 ANK repeats.,</u>
Expression :	<u>Prostate,</u>
Sort :	<u>12911</u>
No4 :	<u>1</u>
Host :	<u>Rabbit</u>
Modifications :	<u>Unmodified</u>

Products Images



Immunohistochemistry analysis of paraffin-embedded human prostate carcinoma, using POTE8 Antibody. The picture on the right is blocked with the synthesized peptide.