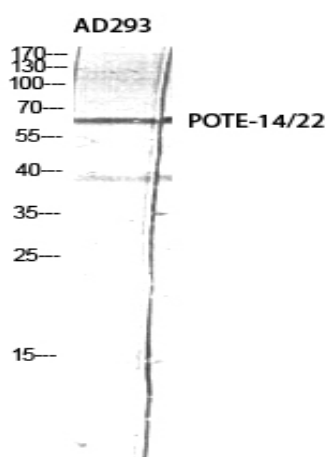


POTE-14/22 Polyclonal Antibody

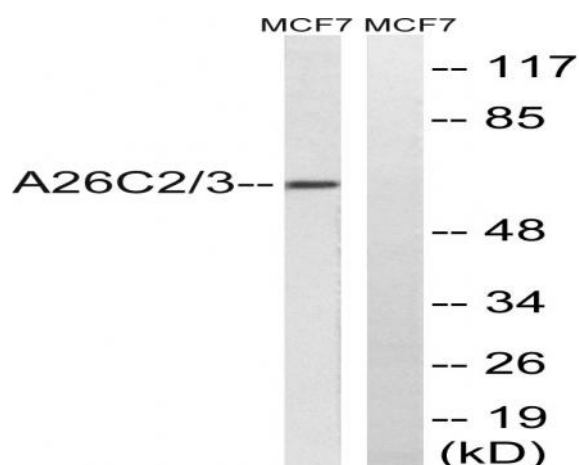
Catalog No :	YT3822
Reactivity :	Human
Applications :	WB;IHC;IF;ELISA
Target :	POTE-14/22
Gene Name :	POTEG/POTEH
Protein Name :	POTE ankyrin domain family member G/H
Human Gene Id :	23784/404785
Human Swiss Prot No :	Q6S545/Q6S5H5
Immunogen :	The antiserum was produced against synthesized peptide derived from human A26C2/3. AA range:178-227
Specificity :	POTE-14/22 Polyclonal Antibody detects endogenous levels of POTE-14/22 protein.
Formulation :	Liquid in PBS containing 50% glycerol, 0.5% BSA and 0.02% sodium azide.
Source :	Polyclonal, Rabbit,IgG
Dilution :	WB 1:500 - 1:2000. IHC 1:100 - 1:300. ELISA: 1:40000.. IF 1:50-200
Purification :	The antibody was affinity-purified from rabbit antiserum by affinity-chromatography using epitope-specific immunogen.
Concentration :	1 mg/ml
Storage Stability :	-15°C to -25°C/1 year(Do not lower than -25°C)
Observed Band :	61kD
Background :	similarity:Belongs to the POTE family.,similarity:Contains 7 ANK repeats.,

Function :	similarity:Belongs to the POTE family.,similarity:Contains 7 ANK repeats.,
Subcellular Location :	integral component of membrane,
Expression :	Prostate,
Sort :	12909
No4 :	1
Host :	Rabbit
Modifications :	Unmodified

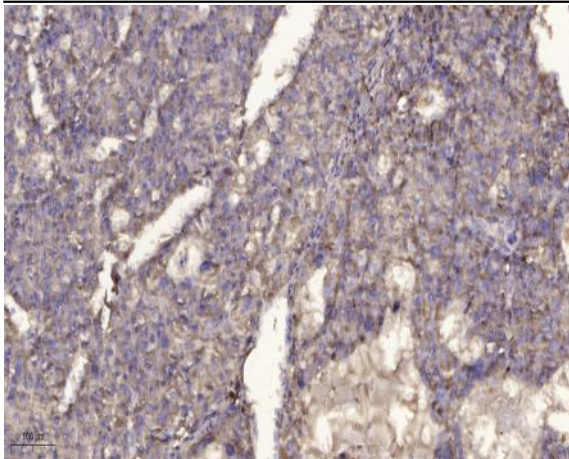
Products Images



Western Blot analysis of AD293 using POTE-14/22 Polyclonal Antibody diluted at 1:2000



Western blot analysis of lysates from MCF-7 cells, using A26C2/3 Antibody. The lane on the right is blocked with the synthesized peptide.



Immunohistochemical analysis of paraffin-embedded human liver cancer. 1, Antibody was diluted at 1:200(4° overnight). 2, Tris-EDTA,pH9.0 was used for antigen retrieval. 3,Secondary antibody was diluted at 1:200(room temperature, 45min).