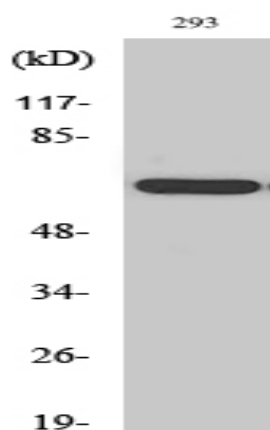


**POTE14/22 Polyclonal Antibody**

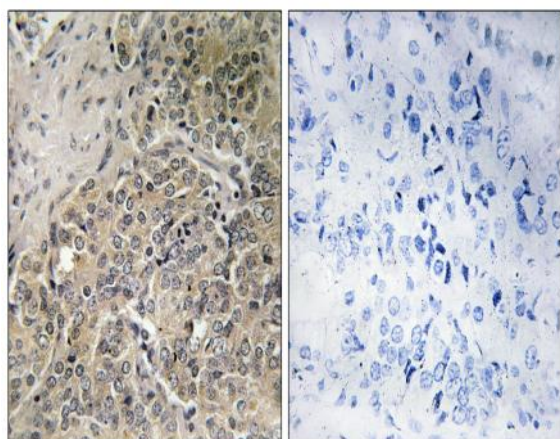
<b>Catalog No :</b>	YT3821
<b>Reactivity :</b>	Human
<b>Applications :</b>	WB;IHC;IF;ELISA
<b>Target :</b>	POTE14/22
<b>Gene Name :</b>	POTEG
<b>Protein Name :</b>	POTE ankyrin domain family member G
<b>Human Gene Id :</b>	404785/23784
<b>Human Swiss Prot No :</b>	Q6S5H5/Q6S545/A6NI47
<b>Immunogen :</b>	The antiserum was produced against synthesized peptide derived from human POTEG. AA range:401-450
<b>Specificity :</b>	POTE14/22 Polyclonal Antibody detects endogenous levels of POTE14/22 protein.
<b>Formulation :</b>	Liquid in PBS containing 50% glycerol, 0.5% BSA and 0.02% sodium azide.
<b>Source :</b>	Polyclonal, Rabbit,IgG
<b>Dilution :</b>	WB 1:500 - 1:2000. IHC 1:100 - 1:300. ELISA: 1:40000.. IF 1:50-200
<b>Purification :</b>	The antibody was affinity-purified from rabbit antiserum by affinity-chromatography using epitope-specific immunogen.
<b>Concentration :</b>	1 mg/ml
<b>Storage Stability :</b>	-15°C to -25°C/1 year(Do not lower than -25°C)
<b>Observed Band :</b>	67kD
<b>Background :</b>	similarity:Belongs to the POTE family.,similarity:Contains 5 ANK repeats.,

<b>Function :</b>	similarity:Belongs to the POTE family.,similarity:Contains 5 ANK repeats.,
<b>Expression :</b>	Prostate,
<b>Sort :</b>	12908
<b>No4 :</b>	1
<b>Host :</b>	Rabbit
<b>Modifications :</b>	Unmodified

## Products Images



Western Blot analysis of various cells using POTE14/22 Polyclonal Antibody



Immunohistochemistry analysis of paraffin-embedded human prostate carcinoma, using A26C2/3 Antibody. The picture on the right is blocked with the synthesized peptide.