

RGAG1 Polyclonal Antibody

Catalog No :	YT4067
Reactivity :	Human;Mouse
Applications :	WB;ELISA
Target :	RGAG1
Gene Name :	RGAG1
Protein Name :	Retrotransposon gag domain-containing protein 1
Human Gene Id :	57529
Human Swiss Prot No :	Q8NET4
Mouse Swiss Prot No :	Q32KG4
Immunogen :	The antiserum was produced against synthesized peptide derived from human RGAG1. AA range:1331-1380
Specificity :	RGAG1 Polyclonal Antibody detects endogenous levels of RGAG1 protein.
Formulation :	Liquid in PBS containing 50% glycerol, 0.5% BSA and 0.02% sodium azide.
Source :	Polyclonal, Rabbit,IgG
Dilution :	WB 1:500 - 1:2000. ELISA: 1:40000. Not yet tested in other applications.
Purification :	The antibody was affinity-purified from rabbit antiserum by affinity-chromatography using epitope-specific immunogen.
Concentration :	1 mg/ml
Storage Stability :	-15°C to -25°C/1 year(Do not lower than -25°C)
Observed Band :	144kD

Background : RGAG1 (Retrotransposon Gag Domain Containing 1) is a Protein Coding gene. Diseases associated with RGAG1 include non-syndromic x-linked intellectual disability.

Expression : Brain,Carcinoma,

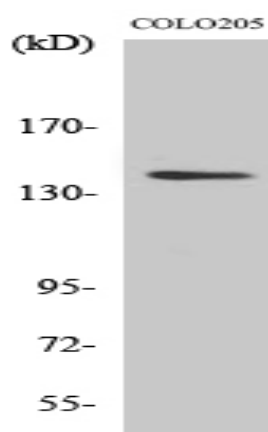
Sort : 14425

No4 : 1

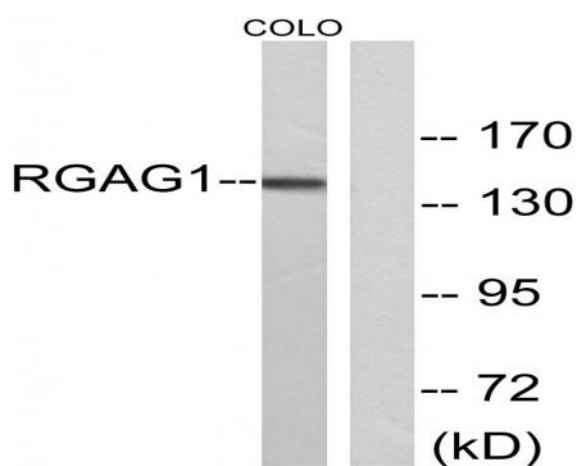
Host : Rabbit

Modifications : Unmodified

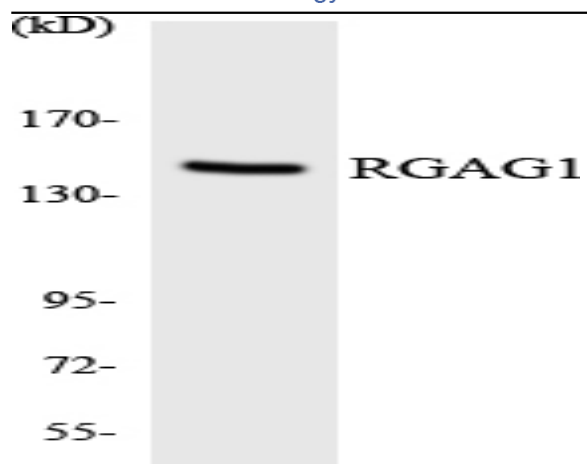
Products Images



Western blot analysis of various cells using RGAG1 Polyclonal Antibody



Western blot analysis of lysates from COLO cells, using RGAG1 Antibody. The lane on the right is blocked with the synthesized peptide.



Western blot analysis of the lysates from HT-29 cells using RGAG1 antibody.