

RFPL4A Polyclonal Antibody

Catalog No :	YT4062
Reactivity :	Human;Rat;Mouse;
Applications :	WB;ELISA;IHC
Target :	RFPL4A
Gene Name :	RFPL4A
Protein Name :	Ret finger protein-like 4A
Human Gene Id :	342931
Human Swiss Prot No :	A6NLU0
Mouse Swiss Prot No :	Q8VH31
Immunogen :	The antiserum was produced against synthesized peptide derived from human RFPL4A. AA range:155-204
Specificity :	RFPL4A Polyclonal Antibody detects endogenous levels of RFPL4A protein.
Formulation :	Liquid in PBS containing 50% glycerol, 0.5% BSA and 0.02% sodium azide.
Source :	Polyclonal, Rabbit,IgG
Dilution :	WB 1:500-2000;IHC 1:50-300; ELISA 2000-20000
Purification :	The antibody was affinity-purified from rabbit antiserum by affinity-chromatography using epitope-specific immunogen.
Concentration :	1 mg/ml
Storage Stability :	-15°C to -25°C/1 year(Do not lower than -25°C)
Observed Band :	42kD

Background : The ret finger protein-like 4 gene, Rfpl4, encodes a putative E3 ubiquitin-protein ligase expressed in adult germ cells.

Subcellular Location : Cytoplasm . Nucleus .

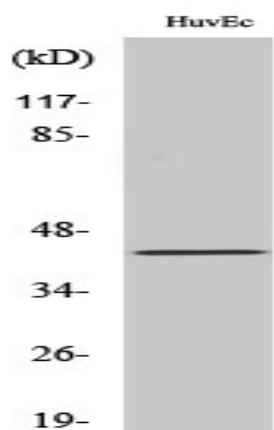
Sort : 14412

No4 : 1

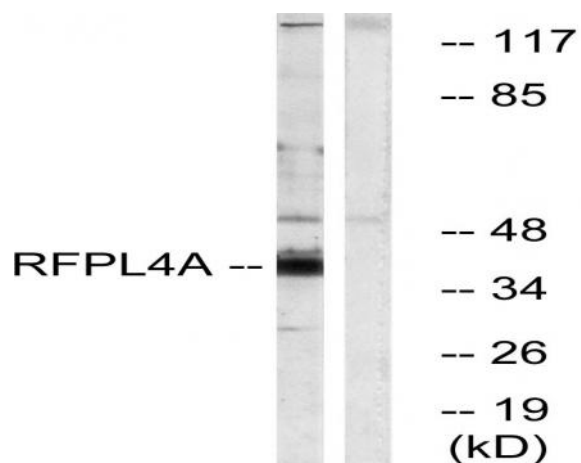
Host : Rabbit

Modifications : Unmodified

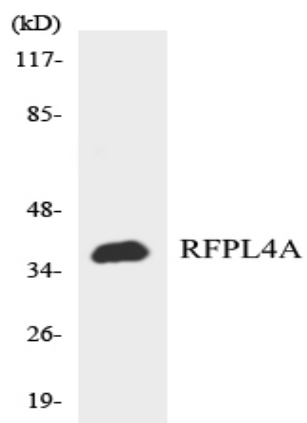
Products Images



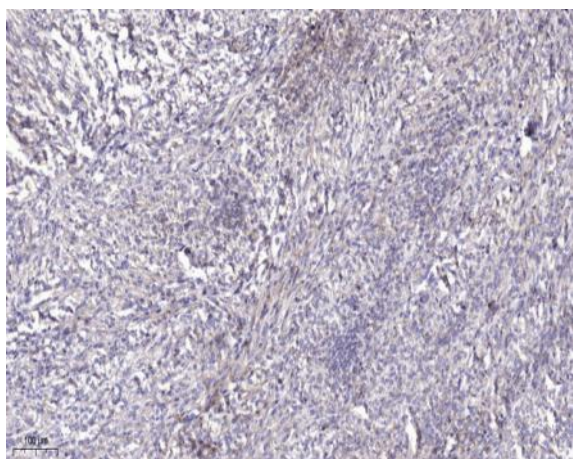
Western Blot analysis of various cells using RFPL4A Polyclonal Antibody



Western blot analysis of lysates from HUVEC cells, using RFPL4A Antibody. The lane on the right is blocked with the synthesized peptide.



Western blot analysis of the lysates from HeLa cells using RFPL4A antibody.



Immunohistochemical analysis of paraffin-embedded human Colon cancer. 1, Antibody was diluted at 1:200(4° overnight). 2, Tris-EDTA,pH9.0 was used for antigen retrieval. 3,Secondary antibody was diluted at 1:200(room temperature, 45min).