

REXO1 Polyclonal Antibody

Catalog No :	YT4059
Reactivity :	Human;Mouse
Applications :	IHC;IF;ELISA
Target :	REXO1
Fields :	>>Ribosome biogenesis in eukaryotes
Gene Name :	REXO1
Protein Name :	RNA exonuclease 1 homolog
Human Gene Id :	57455
Human Swiss Prot No :	Q8N1G1
Mouse Swiss Prot No :	Q7TT28
Immunogen :	The antiserum was produced against synthesized peptide derived from human REXO1. AA range:185-234
Specificity :	REXO1 Polyclonal Antibody detects endogenous levels of REXO1 protein.
Formulation :	Liquid in PBS containing 50% glycerol, 0.5% BSA and 0.02% sodium azide.
Source :	Polyclonal, Rabbit,IgG
Dilution :	IHC 1:100 - 1:300. ELISA: 1:20000.. IF 1:50-200
Purification :	The antibody was affinity-purified from rabbit antiserum by affinity-chromatography using epitope-specific immunogen.
Concentration :	1 mg/ml
Storage Stability :	-15°C to -25°C/1 year(Do not lower than -25°C)

Molecularweight : 132kD

Background : function:Seems to have no detectable effect on transcription elongation in vitro.,similarity:Belongs to the REXO1/REXO3 family.,similarity:Contains 1 exonuclease domain.,subunit:Interacts with TCEA2 and TCEB3.,tissue specificity:Ubiquitously expressed.,

Function : function:Seems to have no detectable effect on transcription elongation in vitro.,similarity:Belongs to the REXO1/REXO3 family.,similarity:Contains 1 exonuclease domain.,subunit:Interacts with TCEA2 and TCEB3.,tissue specificity:Ubiquitously expressed.,

Subcellular Location : Nucleus .

Expression : Ubiquitously expressed.

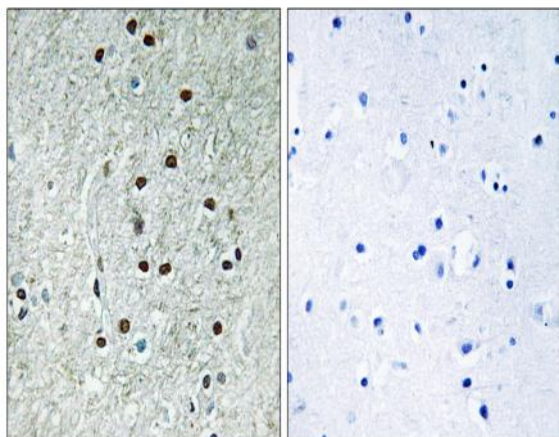
Sort : 14403

No4 : 1

Host : Rabbit

Modifications : Unmodified

Products Images



Immunohistochemistry analysis of paraffin-embedded human brain, using REXO1 Antibody. The picture on the right is blocked with the synthesized peptide.