

## Repac Polyclonal Antibody

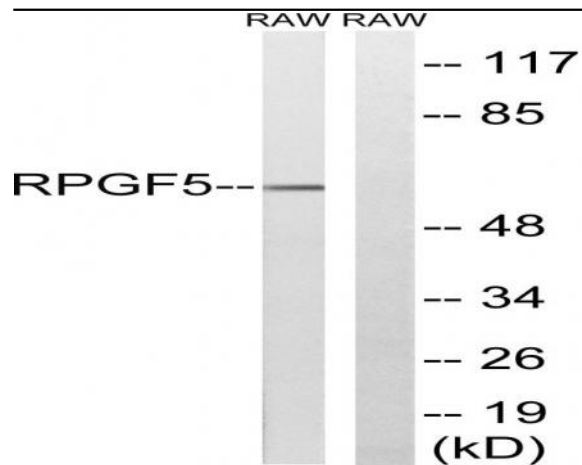
<b>Catalog No :</b>	YT4051
<b>Reactivity :</b>	Human;Mouse;Rat
<b>Applications :</b>	WB;IHC
<b>Target :</b>	Repac
<b>Fields :</b>	>>Ras signaling pathway;>>Rap1 signaling pathway
<b>Gene Name :</b>	RAPGEF5
<b>Protein Name :</b>	Rap guanine nucleotide exchange factor 5
<b>Human Gene Id :</b>	9771
<b>Human Swiss Prot No :</b>	Q92565
<b>Mouse Gene Id :</b>	217944
<b>Mouse Swiss Prot No :</b>	Q8C0Q9
<b>Rat Gene Id :</b>	362799
<b>Rat Swiss Prot No :</b>	P83900
<b>Immunogen :</b>	The antiserum was produced against synthesized peptide derived from human RAPGEF5. AA range:431-480
<b>Specificity :</b>	Repac Polyclonal Antibody detects endogenous levels of Repac protein.
<b>Formulation :</b>	Liquid in PBS containing 50% glycerol, 0.5% BSA and 0.02% sodium azide.
<b>Source :</b>	Polyclonal, Rabbit,IgG
<b>Dilution :</b>	WB 1:500-2000;IHC 1:50-300

---

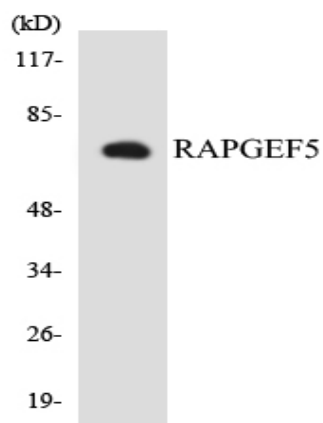
<b>Purification :</b>	The antibody was affinity-purified from rabbit antiserum by affinity-chromatography using epitope-specific immunogen.
<b>Concentration :</b>	1 mg/ml
<b>Storage Stability :</b>	-15°C to -25°C/1 year(Do not lower than -25°C)
<b>Observed Band :</b>	60kD
<b>Cell Pathway :</b>	Regulation of Actin Dynamics; AMPK
<b>Background :</b>	Members of the RAS (see HRAS; MIM 190020) subfamily of GTPases function in signal transduction as GTP/GDP-regulated switches that cycle between inactive GDP- and active GTP-bound states. Guanine nucleotide exchange factors (GEFs), such as RAPGEF5, serve as RAS activators by promoting acquisition of GTP to maintain the active GTP-bound state and are the key link between cell surface receptors and RAS activation (Rebhun et al., 2000 [PubMed 10934204]).[supplied by OMIM, Mar 2008],
<b>Function :</b>	function:Guanine nucleotide exchange factor (GEF) for RAP1A, RAP2A and MRAS/M-Ras-GTP. Its association with MRAS inhibits Rap1 activation.,similarity:Contains 1 N-terminal Ras-GEF domain.,similarity:Contains 1 Ras-GEF domain.,tissue specificity:Widely expressed with highest levels in brain.,
<b>Subcellular Location :</b>	Nucleus.
<b>Expression :</b>	Widely expressed with highest levels in brain.
<b>Sort :</b>	14385
<b>No4 :</b>	1
<b>Host :</b>	Rabbit
<b>Modifications :</b>	Unmodified

---

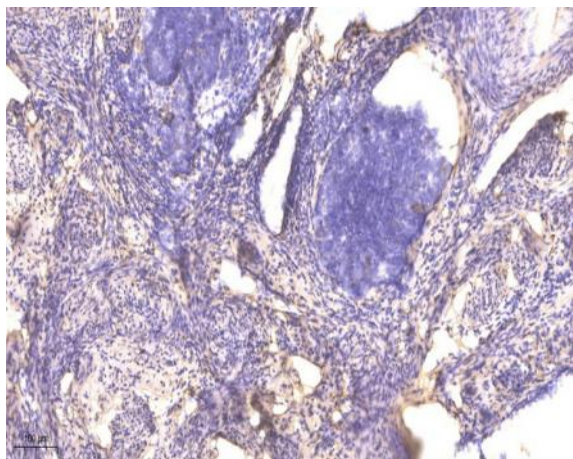
## Products Images



Western blot analysis of lysates from RAW264.7 cells, using RAPGEF5 Antibody. The lane on the right is blocked with the synthesized peptide.



Western blot analysis of the lysates from COLO205 cells using RAPGEF5 antibody.



Immunohistochemical analysis of paraffin-embedded human cervical carcinoma. 1, Antibody was diluted at 1:200(4° overnight). 2, Tris-EDTA,pH9.0 was used for antigen retrieval. 3,Secondary antibody was diluted at 1:200(room temperature, 45min).