

RCC2 Polyclonal Antibody

Catalog No :	YT4031
Reactivity :	Human;Mouse
Applications :	WB;IHC;IF;ELISA
Target :	RCC2
Gene Name :	RCC2
Protein Name :	Protein RCC2
Human Gene Id :	55920
Human Swiss Prot No :	Q9P258
Mouse Gene Id :	108911
Mouse Swiss Prot No :	Q8BK67
Immunogen :	The antiserum was produced against synthesized peptide derived from human RCC2. AA range:473-522
Specificity :	RCC2 Polyclonal Antibody detects endogenous levels of RCC2 protein.
Formulation :	Liquid in PBS containing 50% glycerol, 0.5% BSA and 0.02% sodium azide.
Source :	Polyclonal, Rabbit,IgG
Dilution :	WB 1:500 - 1:2000. IHC 1:100 - 1:300. ELISA: 1:5000.. IF 1:50-200
Purification :	The antibody was affinity-purified from rabbit antiserum by affinity-chromatography using epitope-specific immunogen.
Concentration :	1 mg/ml
Storage Stability :	-15°C to -25°C/1 year(Do not lower than -25°C)

Observed Band : 56kD

Background : function:Required for completion of mitosis and cytokinesis. May function as a guanine nucleotide exchange factor for the small GTPase RAC1.,PTM:Phosphorylated upon DNA damage, probably by ATM or ATR.,similarity:Contains 7 RCC1 repeats.,subcellular location:Appears in the nucleus at G2, then concentrates at the inner centromere region of chromosomes during prophase. Redistributes to the midzone of the mitotic spindle during anaphase. Here, the protein covers the entire equatorial diameter from cortex to cortex.,subunit:Binds preferentially to the nucleotide-free form of RAC1. Interacts with microtubules.,

Function : function:Required for completion of mitosis and cytokinesis. May function as a guanine nucleotide exchange factor for the small GTPase RAC1.,PTM:Phosphorylated upon DNA damage, probably by ATM or ATR.,similarity:Contains 7 RCC1 repeats.,subcellular location:Appears in the nucleus at G2, then concentrates at the inner centromere region of chromosomes during prophase. Redistributes to the midzone of the mitotic spindle during anaphase. Here, the protein covers the entire equatorial diameter from cortex to cortex.,subunit:Binds preferentially to the nucleotide-free form of RAC1. Interacts with microtubules.,

Subcellular Location : Nucleus, nucleolus . Nucleus . Cytoplasm, cytoskeleton . Chromosome, centromere . Cytoplasm, cytoskeleton, spindle . Chromosome . Midbody . Cell membrane ; Peripheral membrane protein ; Cytoplasmic side . Appears in the nucleus at G2, then concentrates at the inner centromere region of chromosomes during prophase. Redistributes to the midzone of the mitotic spindle during anaphase. Here, the protein covers the entire equatorial diameter from cortex to cortex (PubMed:12919680, PubMed:1939370, PubMed:7559776, PubMed:9914378). Colocalizes with cytoplasmic microtubules in interphase cells (PubMed:23388455). Colocalizes with RAC1 at the cell membrane (PubMed:25074804). .

Expression : Brain,Epithelium,Melanoma,Muscle,Natural killer cell,Uterus,

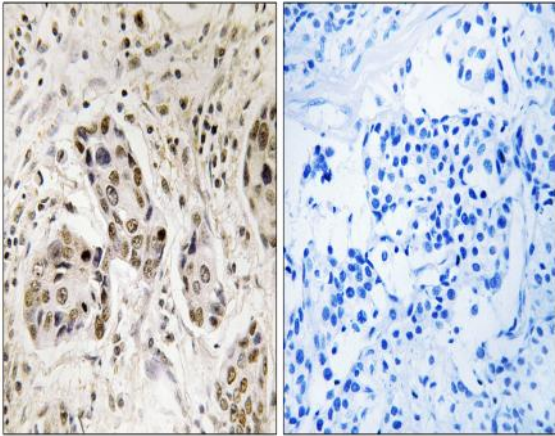
Sort : 14063

No4 : 1

Host : Rabbit

Modifications : Unmodified

Products Images



Immunohistochemistry analysis of paraffin-embedded human breast carcinoma tissue, using RCC2 Antibody. The picture on the right is blocked with the synthesized peptide.