

**PKI  $\beta$  Polyclonal Antibody**

<b>Catalog No :</b>	YT3776
<b>Reactivity :</b>	Human;Mouse;Rat
<b>Applications :</b>	WB;IHC;IF;ELISA
<b>Target :</b>	PKI $\beta$
<b>Gene Name :</b>	PKIB
<b>Protein Name :</b>	cAMP-dependent protein kinase inhibitor beta
<b>Human Gene Id :</b>	5570
<b>Human Swiss Prot No :</b>	Q9C010
<b>Mouse Swiss Prot No :</b>	Q04758
<b>Rat Swiss Prot No :</b>	P27775
<b>Immunogen :</b>	The antiserum was produced against synthesized peptide derived from human IPKB. AA range:29-78
<b>Specificity :</b>	PKI $\beta$ Polyclonal Antibody detects endogenous levels of PKI $\beta$ protein.
<b>Formulation :</b>	Liquid in PBS containing 50% glycerol, 0.5% BSA and 0.02% sodium azide.
<b>Source :</b>	Polyclonal, Rabbit,IgG
<b>Dilution :</b>	IHC 1:100 - 1:300. IF 1:200 - 1:1000. ELISA: 1:5000,WB 1:500-2000
<b>Purification :</b>	The antibody was affinity-purified from rabbit antiserum by affinity-chromatography using epitope-specific immunogen.
<b>Concentration :</b>	1 mg/ml
<b>Storage Stability :</b>	-15°C to -25°C/1 year(Do not lower than -25°C)

**Molecularweight :** 8kD

**Background :** protein kinase (cAMP-dependent, catalytic) inhibitor beta(PKIB) Homo sapiens This gene encodes a member of the cAMP-dependent protein kinase inhibitor family. The encoded protein may play a role in the protein kinase A (PKA) pathway by interacting with the catalytic subunit of PKA, and overexpression of this gene may play a role in prostate cancer. Alternatively spliced transcript variants encoding multiple isoforms have been observed for this gene. [provided by RefSeq, Jul 2012],

**Function :** function:Extremely potent competitive inhibitor of cAMP-dependent protein kinase activity, this protein interacts with the catalytic subunit of the enzyme after the cAMP-induced dissociation of its regulatory chains.,similarity:Belongs to the PKI family.,

**Subcellular Location :** nucleus,cytoplasm,

**Expression :** Placenta,

**Tag :** orthogonal

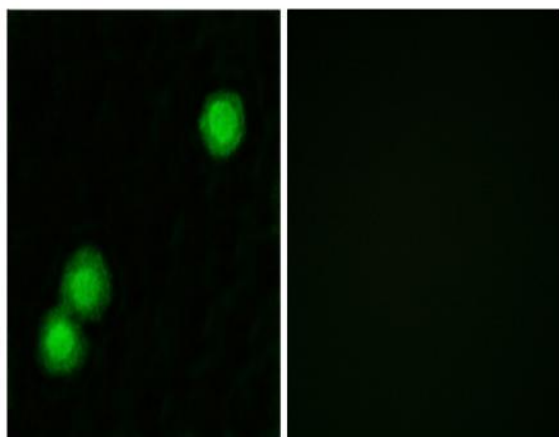
**Sort :** 1150

**No4 :** 1

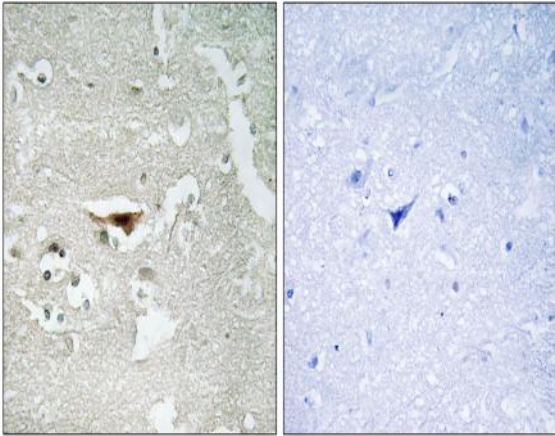
**Host :** Rabbit

**Modifications :** Unmodified

## Products Images



Immunofluorescence analysis of MCF7 cells, using IPKB Antibody. The picture on the right is blocked with the synthesized peptide.



Immunohistochemistry analysis of paraffin-embedded human brain tissue, using IPKB Antibody. The picture on the right is blocked with the synthesized peptide.