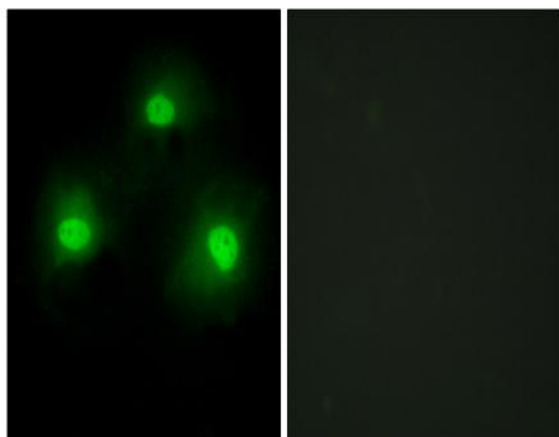


Pki α Polyclonal Antibody

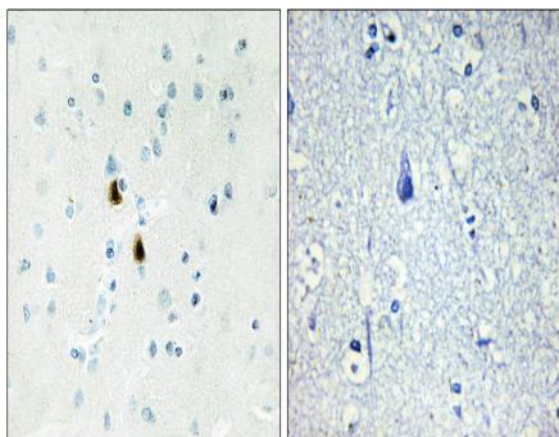
Catalog No :	YT3775
Reactivity :	Human;Mouse;Rat
Applications :	IHC;IF;ELISA
Target :	Pki α
Fields :	>>Alcoholism
Gene Name :	PKIA
Protein Name :	cAMP-dependent protein kinase inhibitor alpha
Human Gene Id :	5569
Human Swiss Prot No :	P61925
Mouse Gene Id :	18767
Mouse Swiss Prot No :	P63248
Rat Gene Id :	114906
Rat Swiss Prot No :	P63249
Immunogen :	The antiserum was produced against synthesized peptide derived from human IPKA. AA range:10-59
Specificity :	Pki α Polyclonal Antibody detects endogenous levels of Pki α protein.
Formulation :	Liquid in PBS containing 50% glycerol, 0.5% BSA and 0.02% sodium azide.
Source :	Polyclonal, Rabbit,IgG
Dilution :	IHC 1:100 - 1:300. IF 1:200 - 1:1000. ELISA: 1:20000. Not yet tested in other applications.

Purification :	The antibody was affinity-purified from rabbit antiserum by affinity-chromatography using epitope-specific immunogen.
Concentration :	1 mg/ml
Storage Stability :	-15°C to -25°C/1 year(Do not lower than -25°C)
Molecularweight :	8kD
Background :	The protein encoded by this gene is a member of the cAMP-dependent protein kinase (PKA) inhibitor family. This protein was demonstrated to interact with and inhibit the activities of both C alpha and C beta catalytic subunits of the PKA. Alternatively spliced transcript variants encoding the same protein have been reported. [provided by RefSeq, Jul 2008],
Function :	function:Extremely potent competitive inhibitor of cAMP-dependent protein kinase activity, this protein interacts with the catalytic subunit of the enzyme after the cAMP-induced dissociation of its regulatory chains.,miscellaneous:The inhibitory site contains regions very similar to the hinge regions (sites that directly interact with the enzyme active site) and "pseudosubstrate site" of the regulatory chains; but, unlike these chains, PKI does not contain cAMP-binding sites. The arginine residues within the inhibitory site are essential for inhibition and recognition of the enzyme active site.,similarity:Belongs to the PKI family.,
Subcellular Location :	nucleus,cytoplasm,
Expression :	Skeletal muscle,
Sort :	12788
No4 :	1
Host :	Rabbit
Modifications :	Unmodified

Products Images



Immunofluorescence analysis of HeLa cells, using IPKA Antibody. The picture on the right is blocked with the synthesized peptide.



Immunohistochemistry analysis of paraffin-embedded human brain tissue, using IPKA Antibody. The picture on the right is blocked with the synthesized peptide.