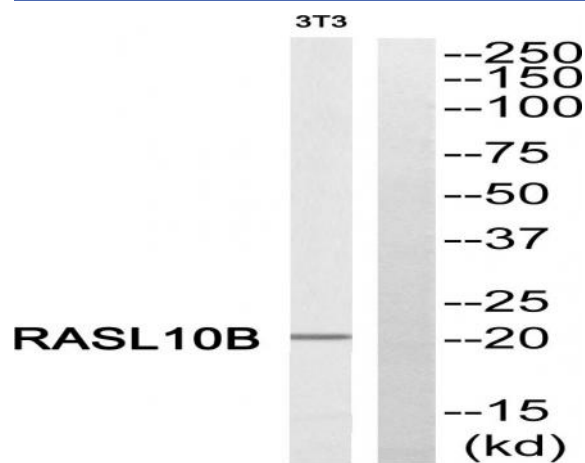


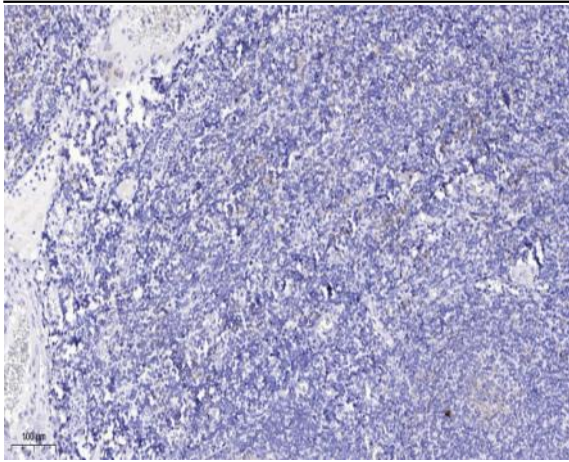
**RASL10B Polyclonal Antibody**

<b>Catalog No :</b>	YT4010
<b>Reactivity :</b>	Human;Mouse
<b>Applications :</b>	WB;IHC
<b>Target :</b>	RASL10B
<b>Gene Name :</b>	RASL10B
<b>Protein Name :</b>	Ras-like protein family member 10B
<b>Human Gene Id :</b>	91608
<b>Human Swiss Prot No :</b>	Q96S79
<b>Mouse Gene Id :</b>	276952
<b>Mouse Swiss Prot No :</b>	Q5SSG5
<b>Immunogen :</b>	Synthesized peptide derived from RASL10B . at AA range: 80-160
<b>Specificity :</b>	RASL10B Polyclonal Antibody detects endogenous levels of RASL10B protein.
<b>Formulation :</b>	Liquid in PBS containing 50% glycerol, 0.5% BSA and 0.02% sodium azide.
<b>Source :</b>	Polyclonal, Rabbit,IgG
<b>Dilution :</b>	WB 1:500-2000;IHC 1:50-300
<b>Purification :</b>	The antibody was affinity-purified from rabbit antiserum by affinity-chromatography using epitope-specific immunogen.
<b>Concentration :</b>	1 mg/ml
<b>Storage Stability :</b>	-15°C to -25°C/1 year(Do not lower than -25°C)

<b>Observed Band :</b>	22kD
<b>Background :</b>	similarity:Belongs to the small GTPase superfamily. Ras family.,
<b>Function :</b>	similarity:Belongs to the small GTPase superfamily. Ras family.,
<b>Subcellular Location :</b>	Cell membrane ; Lipid-anchor ; Cytoplasmic side .
<b>Expression :</b>	Expressed at high levels in skeletal muscle and, at much lower levels, in heart, brain and pancreas.
<b>Sort :</b>	13827
<b>No4 :</b>	1
<b>Host :</b>	Rabbit
<b>Modifications :</b>	Unmodified

## Products Images





Immunohistochemical analysis of paraffin-embedded human tonsil. 1, Antibody was diluted at 1:200(4 ° overnight). 2, Tris-EDTA,pH9.0 was used for antigen retrieval. 3,Secondary antibody was diluted at 1:200(room temperature, 45min).