

## Rak Polyclonal Antibody

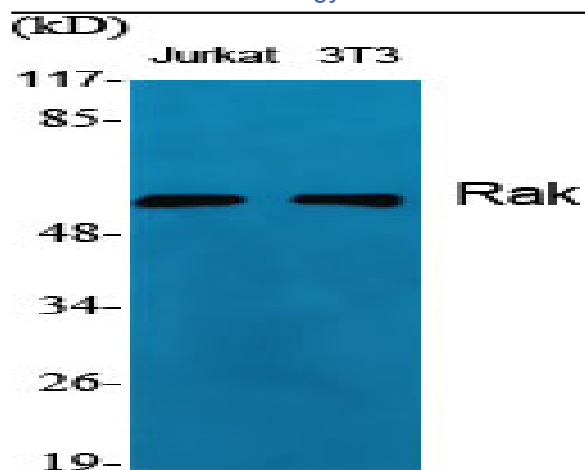
<b>Catalog No :</b>	YT3996
<b>Reactivity :</b>	Human;Mouse;Rat
<b>Applications :</b>	WB;IHC;IF;ELISA
<b>Target :</b>	Rak
<b>Gene Name :</b>	FRK
<b>Protein Name :</b>	Tyrosine-protein kinase FRK
<b>Human Gene Id :</b>	2444
<b>Human Swiss Prot No :</b>	P42685
<b>Mouse Gene Id :</b>	14302
<b>Mouse Swiss Prot No :</b>	Q922K9
<b>Rat Gene Id :</b>	79209
<b>Rat Swiss Prot No :</b>	Q62662
<b>Immunogen :</b>	The antiserum was produced against synthesized peptide derived from human FRK. AA range:71-120
<b>Specificity :</b>	Rak Polyclonal Antibody detects endogenous levels of Rak protein.
<b>Formulation :</b>	Liquid in PBS containing 50% glycerol, 0.5% BSA and 0.02% sodium azide.
<b>Source :</b>	Polyclonal, Rabbit,IgG
<b>Dilution :</b>	WB 1:500 - 1:2000. IHC 1:100 - 1:300. IF 1:200 - 1:1000. ELISA: 1:10000. Not yet tested in other applications.
<b>Purification :</b>	The antibody was affinity-purified from rabbit antiserum by affinity-chromatography using epitope-specific immunogen.

---

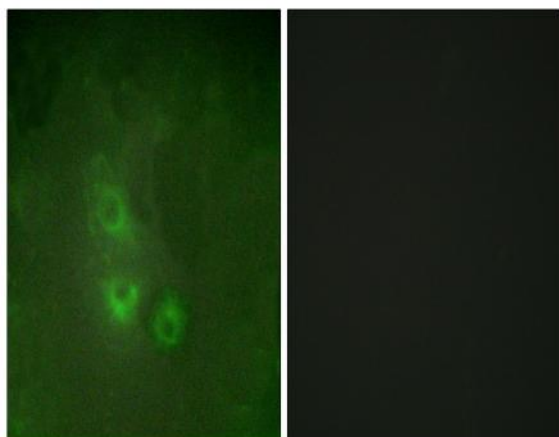
<b>Concentration :</b>	1 mg/ml
<b>Storage Stability :</b>	-15°C to -25°C/1 year(Do not lower than -25°C)
<b>Observed Band :</b>	55kD
<b>Background :</b>	The protein encoded by this gene belongs to the TYR family of protein kinases. This tyrosine kinase is a nuclear protein and may function during G1 and S phase of the cell cycle and suppress growth. [provided by RefSeq, Jul 2008],
<b>Function :</b>	catalytic activity:ATP + a [protein]-L-tyrosine = ADP + a [protein]-L-tyrosine phosphate.,similarity:Belongs to the protein kinase superfamily. Tyr protein kinase family. SRC subfamily.,similarity:Contains 1 protein kinase domain.,similarity:Contains 1 SH2 domain.,similarity:Contains 1 SH3 domain.,tissue specificity:Restricted to cells lines derived from tissues of lymphoid, brain, breast, colon and bladder origin.,
<b>Subcellular Location :</b>	Cytoplasm . Nucleus . Predominantly found in the nucleus, with a small fraction found in the cell periphery.
<b>Expression :</b>	Predominantly expressed in epithelial derived cell lines and tissues, especially normal liver, kidney, breast and colon.
<b>Sort :</b>	13806
<b>No4 :</b>	1
<b>Host :</b>	Rabbit
<b>Modifications :</b>	Unmodified

---

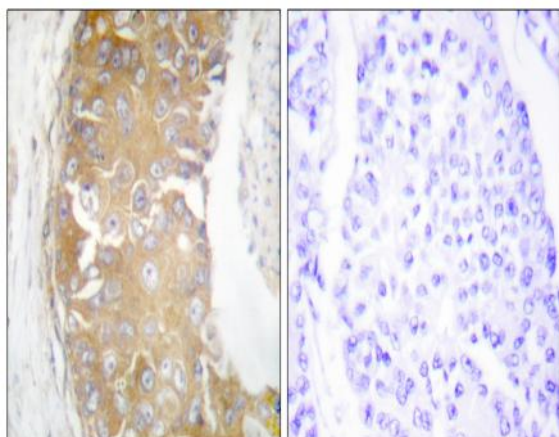
## Products Images



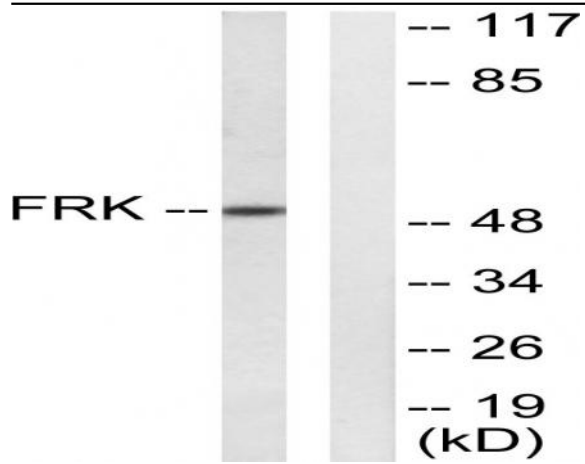
Western Blot analysis of various cells using Rak Polyclonal Antibody



Immunofluorescence analysis of HUVEC cells, using FRK Antibody. The picture on the right is blocked with the synthesized peptide.



Immunohistochemistry analysis of paraffin-embedded human breast carcinoma tissue, using FRK Antibody. The picture on the right is blocked with the synthesized peptide.



Western blot analysis of lysates from Jurkat cells, using FRK Antibody. The lane on the right is blocked with the synthesized peptide.