

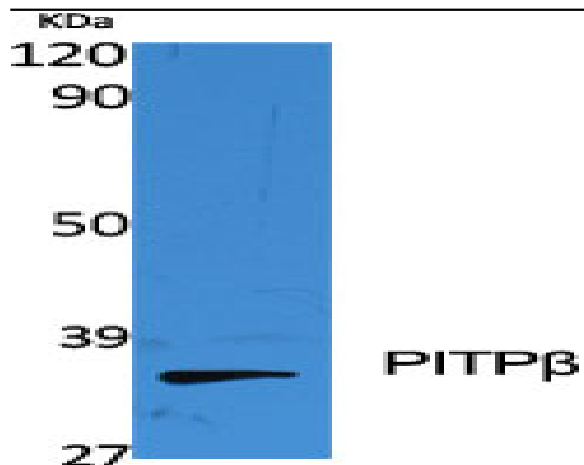
## PITPβ Polyclonal Antibody

<b>Catalog No :</b>	YT3738
<b>Reactivity :</b>	Human;Mouse;Rat
<b>Applications :</b>	WB;ELISA;IHC
<b>Target :</b>	PITPβ
<b>Gene Name :</b>	PITPNB
<b>Protein Name :</b>	Phosphatidylinositol transfer protein beta isoform
<b>Human Gene Id :</b>	23760
<b>Human Swiss Prot No :</b>	P48739
<b>Mouse Gene Id :</b>	56305
<b>Mouse Swiss Prot No :</b>	P53811
<b>Rat Gene Id :</b>	114561
<b>Rat Swiss Prot No :</b>	P53812
<b>Immunogen :</b>	The antiserum was produced against synthesized peptide derived from human PITPNB. AA range:20-69
<b>Specificity :</b>	PITPβ Polyclonal Antibody detects endogenous levels of PITPβ protein.
<b>Formulation :</b>	Liquid in PBS containing 50% glycerol, 0.5% BSA and 0.02% sodium azide.
<b>Source :</b>	Polyclonal, Rabbit,IgG
<b>Dilution :</b>	WB 1:500-2000;IHC 1:50-300; ELISA 2000-20000
<b>Purification :</b>	The antibody was affinity-purified from rabbit antiserum by affinity-chromatography using epitope-specific immunogen.

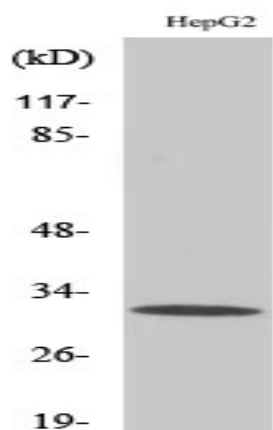
<b>Concentration :</b>	1 mg/ml
<b>Storage Stability :</b>	-15°C to -25°C/1 year(Do not lower than -25°C)
<b>Observed Band :</b>	32kD
<b>Background :</b>	This gene encodes a cytoplasmic protein that catalyzes the transfer of phosphatidylinositol and phosphatidylcholine between membranes. This transfer activity is required for COPI complex-mediated retrograde transport from the Golgi apparatus to the endoplasmic reticulum. Alternative splicing of this gene results in multiple transcript variants. [provided by RefSeq, Sep 2013],
<b>Function :</b>	function:Catalyzes the transfer of PtdIns and phosphatidylcholine between membranes.,PTM:Constitutive phosphorylation of Ser-262 has no effect on phospholipid transfer activity but is required for Golgi targeting.,similarity:Belongs to the PtdIns transfer protein family. Class I subfamily.,tissue specificity:Widely expressed in various tissues including brain.,
<b>Subcellular Location :</b>	Golgi apparatus . Golgi apparatus membrane . Endoplasmic reticulum membrane .
<b>Expression :</b>	Widely expressed in various tissues including brain.
<b>Sort :</b>	12720
<b>No4 :</b>	1
<b>Host :</b>	Rabbit
<b>Modifications :</b>	Unmodified

---

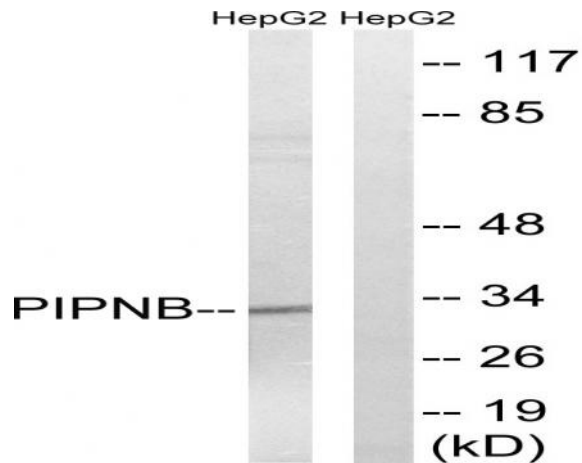
## Products Images



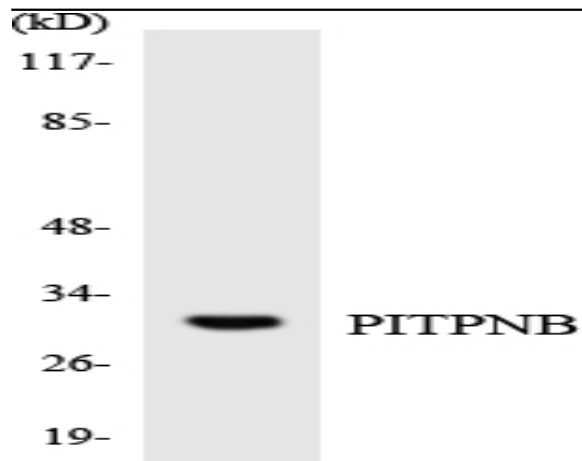
Western Blot analysis of various cells using PITP $\beta$  Polyclonal Antibody diluted at 1:2000



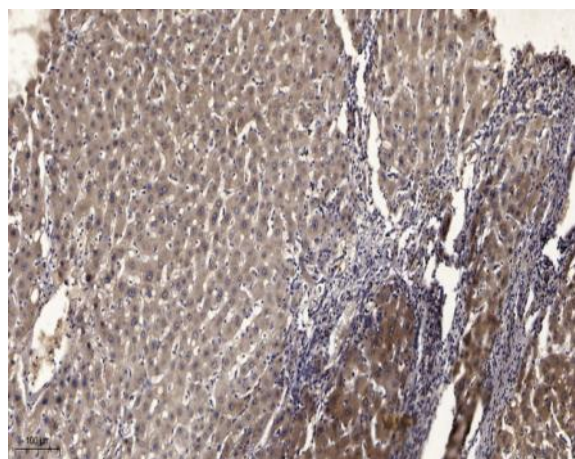
Western Blot analysis of HepG2 cells using PITP $\beta$  Polyclonal Antibody diluted at 1:2000



Western blot analysis of lysates from HepG2 cells, using PITPNB Antibody. The lane on the right is blocked with the synthesized peptide.



Western blot analysis of the lysates from K562 cells using PITPNB antibody.



Immunohistochemical analysis of paraffin-embedded human liver cancer. 1, Antibody was diluted at 1:200(4° overnight). 2, Tris-EDTA,pH9.0 was used for antigen retrieval. 3,Secondary antibody was diluted at 1:200(room temperature, 45min).