

Pim-1 Polyclonal Antibody

Catalog No :	YT3728
Reactivity :	Human;Mouse;Rat
Applications :	WB;IHC
Target :	Pim-1
Fields :	>>JAK-STAT signaling pathway;>>AGE-RAGE signaling pathway in diabetic complications;>>Pathways in cancer;>>MicroRNAs in cancer;>>Acute myeloid leukemia
Gene Name :	PIM1
Protein Name :	Serine/threonine-protein kinase pim-1
Human Gene Id :	5292
Human Swiss Prot No :	P11309
Mouse Swiss Prot No :	P06803
Rat Gene Id :	24649
Rat Swiss Prot No :	P26794
Immunogen :	The antiserum was produced against synthesized peptide derived from human Pim-1. AA range:281-330
Specificity :	Pim-1 Polyclonal Antibody detects endogenous levels of Pim-1 protein.
Formulation :	Liquid in PBS containing 50% glycerol, 0.5% BSA and 0.02% sodium azide.
Source :	Polyclonal, Rabbit,IgG
Dilution :	WB 1:500-2000;IHC 1:50-300
Purification :	The antibody was affinity-purified from rabbit antiserum by affinity-

chromatography using epitope-specific immunogen.

Concentration : 1 mg/ml

Storage Stability : -15°C to -25°C/1 year(Do not lower than -25°C)

Observed Band : 50kD

Cell Pathway : Jak_STAT;Acute myeloid leukemia;

Background : The protein encoded by this gene belongs to the Ser/Thr protein kinase family, and PIM subfamily. This gene is expressed primarily in B-lymphoid and myeloid cell lines, and is overexpressed in hematopoietic malignancies and in prostate cancer. It plays a role in signal transduction in blood cells, contributing to both cell proliferation and survival, and thus provides a selective advantage in tumorigenesis. Both the human and orthologous mouse genes have been reported to encode two isoforms (with preferential cellular localization) resulting from the use of alternative in-frame translation initiation codons, the upstream non-AUG (CUG) and downstream AUG codons (PMIDs:16186805, 1825810).[provided by RefSeq, Aug 2011],

Function : catalytic activity:ATP + a protein = ADP + a phosphoprotein.,cofactor:Manganese.,function:Plays a role in signal transduction in blood cells. Contributes to both cell proliferation and survival and thus provide a selective advantage in tumorigenesis. May affect the structure or silencing of chromatin by phosphorylating HP1 gamma/CBX3.,induction:Strongly induced in leukocytes by the JAK/STAT pathway in response to cytokines.,PTM:Autophosphorylated on both serine/threonine and tyrosine residues.,similarity:Belongs to the protein kinase superfamily. CAMK Ser/Thr protein kinase family. PIM subfamily.,similarity:Contains 1 protein kinase domain.,subunit:Binds to RP9. Isoform 2 is isolated as a monomer whereas isoform 1 complexes with other proteins. Isoform 1, but not isoform 2, binds BMX.,tissue specificity:Expressed primarily in cells of the hematopoietic and germline lineages. Isoform 1 an

Subcellular Location : [Isoform 1]: Cytoplasm. Nucleus.; [Isoform 2]: Cell membrane.

Expression : Expressed primarily in cells of the hematopoietic and germline lineages. Isoform 1 and isoform 2 are both expressed in prostate cancer cell lines.

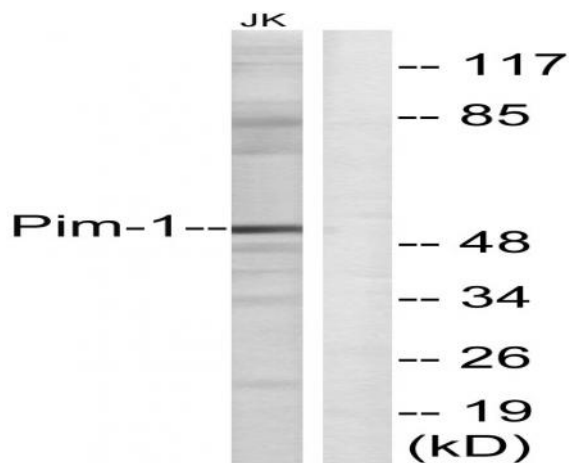
Sort : 12706

No4 : 1

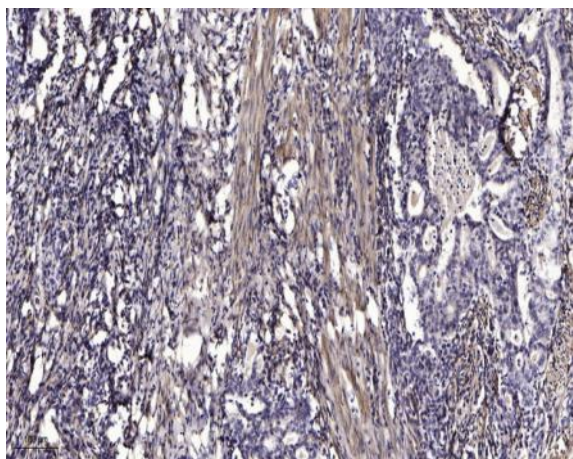
Host : Rabbit

Modifications : Unmodified

Products Images



Western blot analysis of lysates from Jurkat cells, using Pim-1 Antibody. The lane on the right is blocked with the synthesized peptide.



Immunohistochemical analysis of paraffin-embedded human Gastric adenocarcinoma. 1, Antibody was diluted at 1:200(4° overnight). 2, Tris-EDTA,pH9.0 was used for antigen retrieval. 3,Secondary antibody was diluted at 1:200(room temperature, 45min).