

PIG11 Polyclonal Antibody

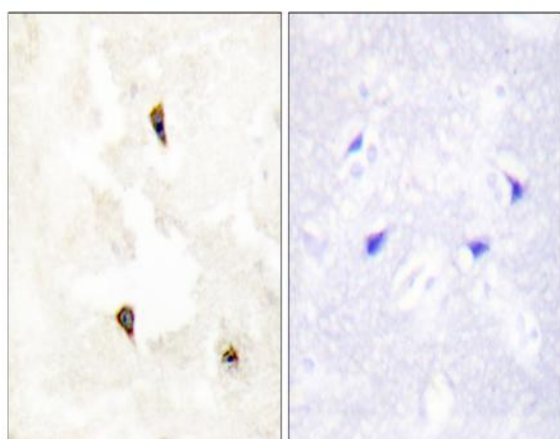
Catalog No :	YT3722
Reactivity :	Human;Rat
Applications :	WB;IHC;IF;ELISA
Target :	PIG11
Gene Name :	TP53I11
Protein Name :	Tumor protein p53-inducible protein 11
Human Gene Id :	9537
Human Swiss Prot No :	O14683
Mouse Swiss Prot No :	Q4QQM4
Immunogen :	The antiserum was produced against synthesized peptide derived from human TP53I11. AA range:71-120
Specificity :	PIG11 Polyclonal Antibody detects endogenous levels of PIG11 protein.
Formulation :	Liquid in PBS containing 50% glycerol, 0.5% BSA and 0.02% sodium azide.
Source :	Polyclonal, Rabbit,IgG
Dilution :	WB 1:500 - 1:2000. IHC 1:100 - 1:300. IF 1:200 - 1:1000. ELISA: 1:20000. Not yet tested in other applications.
Purification :	The antibody was affinity-purified from rabbit antiserum by affinity-chromatography using epitope-specific immunogen.
Concentration :	1 mg/ml
Storage Stability :	-15°C to -25°C/1 year(Do not lower than -25°C)
Observed Band :	18kD

Background :	TP53I11 (Tumor Protein P53 Inducible Protein 11) is a Protein Coding gene.
Subcellular Location :	Membrane ; Multi-pass membrane protein .
Expression :	Brain,Testis,Trachea,
Sort :	12692
No4 :	1
Host :	Rabbit
Modifications :	Unmodified

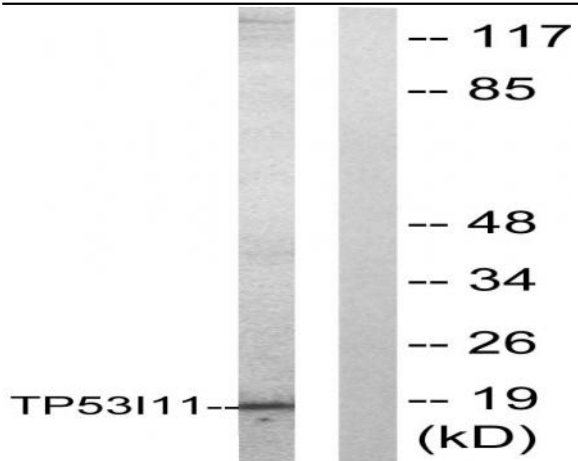
Products Images



Western Blot analysis of various cells using PIG11 Polyclonal Antibody



Immunohistochemistry analysis of paraffin-embedded human breast carcinoma tissue, using TP53I11 Antibody. The picture on the right is blocked with the synthesized peptide.



Western blot analysis of lysates from HUVEC cells, using TP53I11 Antibody. The lane on the right is blocked with the synthesized peptide.