

pICln Polyclonal Antibody

Catalog No :	YT3721
Reactivity :	Human;Rat;Mouse;
Applications :	WB;ELISA;IHC
Target :	pICln
Gene Name :	CLNS1A
Protein Name :	Methylosome subunit pICln
Human Gene Id :	1207
Human Swiss Prot No :	P54105
Mouse Swiss Prot No :	Q61189
Immunogen :	The antiserum was produced against synthesized peptide derived from human CLNS1A. AA range:184-233
Specificity :	pICln Polyclonal Antibody detects endogenous levels of pICln protein.
Formulation :	Liquid in PBS containing 50% glycerol, 0.5% BSA and 0.02% sodium azide.
Source :	Polyclonal, Rabbit,IgG
Dilution :	WB 1:500-2000;IHC 1:50-300; ELISA 2000-20000
Purification :	The antibody was affinity-purified from rabbit antiserum by affinity-chromatography using epitope-specific immunogen.
Concentration :	1 mg/ml
Storage Stability :	-15°C to -25°C/1 year(Do not lower than -25°C)
Observed Band :	37kD

Background : This gene encodes a protein that functions in multiple regulatory pathways. The encoded protein complexes with numerous cytosolic proteins and performs diverse functions including regulation of small nuclear ribonucleoprotein biosynthesis, platelet activation and cytoskeletal organization. The protein is also found associated with the plasma membrane where it functions as a chloride current regulator. Pseudogenes of this gene are found on chromosomes 1, 4 and 6. Several transcript variants encoding different isoforms have been found for this gene. [provided by RefSeq, Jul 2015],

Function : function:The interaction with Sm proteins inhibits their assembly on U RNA and interferes with snRNP biogenesis. Inhibits the binding of survival motor neuron protein (SMN) to Sm proteins. May participate in cellular volume control by activation of a swelling-induced chloride conductance pathway.,PTM:Phosphorylated upon DNA damage, probably by ATM or ATR.,similarity:Belongs to the pICln family.,subcellular location:A small fraction is also associated with the cytoskeleton.,subunit:Homooligomer. Component of the methylosome, a 20S complex containing SKB1. Interacts with Sm proteins.,

Subcellular Location : Cytoplasm, cytosol . Nucleus . Cytoplasm, cytoskeleton . A small fraction is also associated with the cytoskeleton (PubMed:18984161).

Expression : Cervix carcinoma,Colon cancer,Colon carcinoma,Embryonic kid

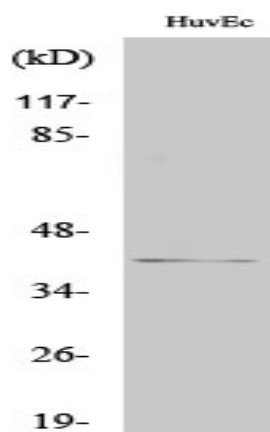
Sort : 12690

No4 : 1

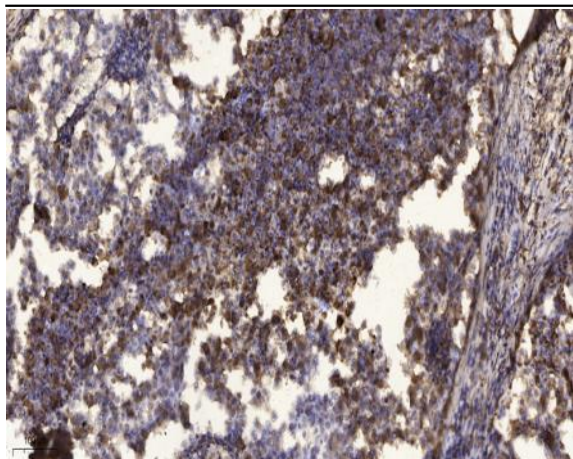
Host : Rabbit

Modifications : Unmodified

Products Images



Western Blot analysis of various cells using pICln Polyclonal Antibody



Immunohistochemical analysis of paraffin-embedded human Squamous cell carcinoma of lung. 1, Antibody was diluted at 1:200(4° overnight). 2, Tris-EDTA,pH9.0 was used for antigen retrieval. 3,Secondary antibody was diluted at 1:200(room temperature, 45min).