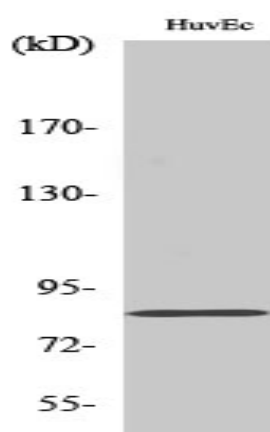


## Photomedin-2 Polyclonal Antibody

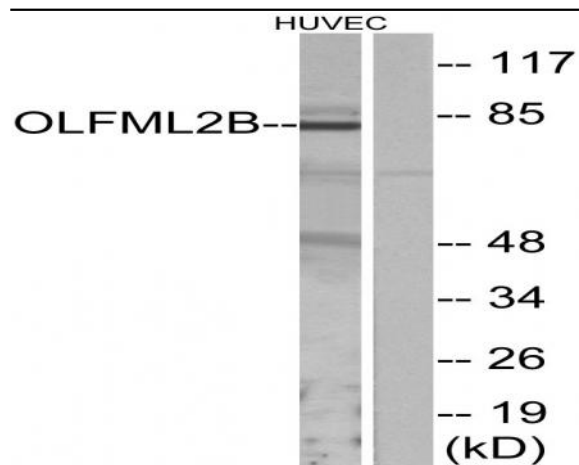
<b>Catalog No :</b>	YT3706
<b>Reactivity :</b>	Human;Mouse
<b>Applications :</b>	WB;IHC;IF;ELISA
<b>Target :</b>	Photomedin-2
<b>Gene Name :</b>	OLFML2B
<b>Protein Name :</b>	Olfactomedin-like protein 2B
<b>Human Gene Id :</b>	25903
<b>Human Swiss Prot No :</b>	Q68BL8
<b>Mouse Gene Id :</b>	320078
<b>Mouse Swiss Prot No :</b>	Q3V1G4
<b>Immunogen :</b>	The antiserum was produced against synthesized peptide derived from human OLFML2B. AA range:171-220
<b>Specificity :</b>	Photomedin-2 Polyclonal Antibody detects endogenous levels of Photomedin-2 protein.
<b>Formulation :</b>	Liquid in PBS containing 50% glycerol, 0.5% BSA and 0.02% sodium azide.
<b>Source :</b>	Polyclonal, Rabbit,IgG
<b>Dilution :</b>	WB 1:500 - 1:2000. IHC 1:100 - 1:300. IF 1:200 - 1:1000. ELISA: 1:10000. Not yet tested in other applications.
<b>Purification :</b>	The antibody was affinity-purified from rabbit antiserum by affinity-chromatography using epitope-specific immunogen.
<b>Concentration :</b>	1 mg/ml

<b>Storage Stability :</b>	<u>-15°C to -25°C/1 year(Do not lower than -25°C)</u>
<b>Observed Band :</b>	<u>84kD</u>
<b>Background :</b>	<u>PTM:O-glycosylated and N-glycosylated.,similarity:Contains 1 olfactomedin-like domain.,subunit:Homodimer. Binds to heparin and chondroitin sulfate E.,</u>
<b>Function :</b>	<u>PTM:O-glycosylated and N-glycosylated.,similarity:Contains 1 olfactomedin-like domain.,subunit:Homodimer. Binds to heparin and chondroitin sulfate E.,</u>
<b>Subcellular Location :</b>	<u>Secreted .</u>
<b>Expression :</b>	<u>Endometrium,PNS,Retina,Testis,Uterus,</u>
<b>Tag :</b>	<u>orthogonal</u>
<b>Sort :</b>	<u>12677</u>
<b>No4 :</b>	<u>1</u>
<b>Host :</b>	<u>Rabbit</u>
<b>Modifications :</b>	<u>Unmodified</u>

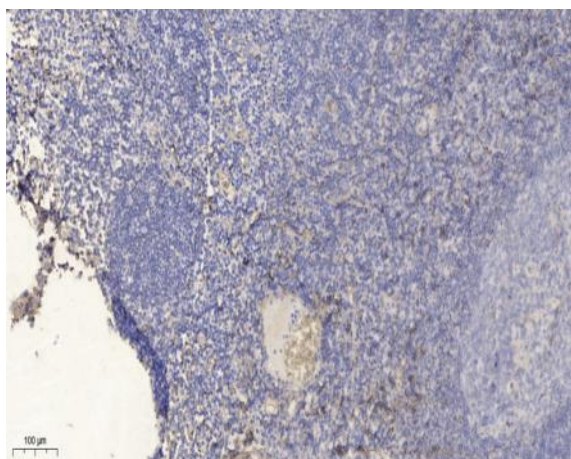
## Products Images



Western Blot analysis of various cells using Photomedin-2 Polyclonal Antibody



Western blot analysis of lysates from HUVEC cells, using OLFML2B Antibody. The lane on the right is blocked with the synthesized peptide.



Immunohistochemical analysis of paraffin-embedded human tonsil. 1, Antibody was diluted at 1:200(4° overnight). 2, Tris-EDTA,pH9.0 was used for antigen retrieval. 3,Secondary antibody was diluted at 1:200(room temperature, 30min).