

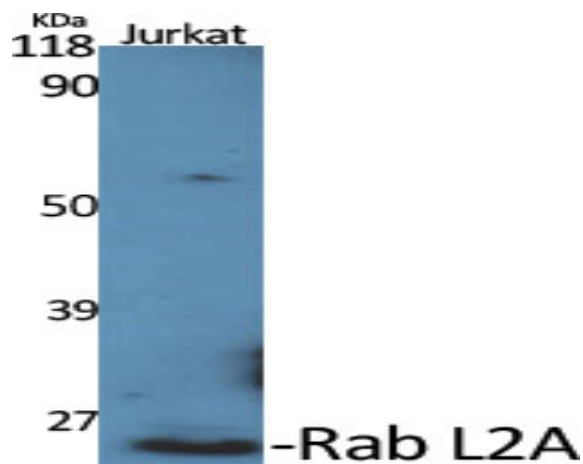
Rab L2A Polyclonal Antibody

Catalog No :	YT3940
Reactivity :	Human;Rat;Mouse;
Applications :	WB;IHC;IF;ELISA
Target :	Rab L2A
Gene Name :	RABL2A
Protein Name :	Rab-like protein 2A
Human Gene Id :	11159
Human Swiss Prot No :	Q9UBK7
Immunogen :	The antiserum was produced against synthesized peptide derived from human RABL2A. AA range:179-228
Specificity :	Rab L2A Polyclonal Antibody detects endogenous levels of Rab L2A protein.
Formulation :	Liquid in PBS containing 50% glycerol, 0.5% BSA and 0.02% sodium azide.
Source :	Polyclonal, Rabbit,IgG
Dilution :	WB 1:500 - 1:2000. IHC 1:100 - 1:300. ELISA: 1:20000.. IF 1:50-200
Purification :	The antibody was affinity-purified from rabbit antiserum by affinity-chromatography using epitope-specific immunogen.
Concentration :	1 mg/ml
Storage Stability :	-15°C to -25°C/1 year(Do not lower than -25°C)
Observed Band :	30-34kD
Background :	This gene is a member of the RAB gene family which belongs to the RAS GTPase superfamily. The proteins in the family of RAS-related signaling

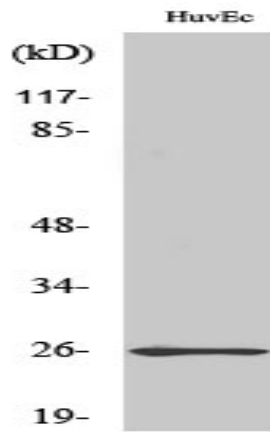
molecules are small GTP-binding proteins that play important roles in the regulation of exocytotic and endocytotic pathways. This gene maps to the site of an ancestral telomere fusion event and may be a subtelomeric gene. Alternative splicing results in multiple transcript variants encoding different isoforms. [provided by RefSeq, Apr 2015],

Function :	similarity:Belongs to the small GTPase superfamily. Rab family.,
Subcellular Location :	intracellular,
Expression :	Expressed in the testis.
Sort :	13236
No4 :	1
Host :	Rabbit
Modifications :	Unmodified

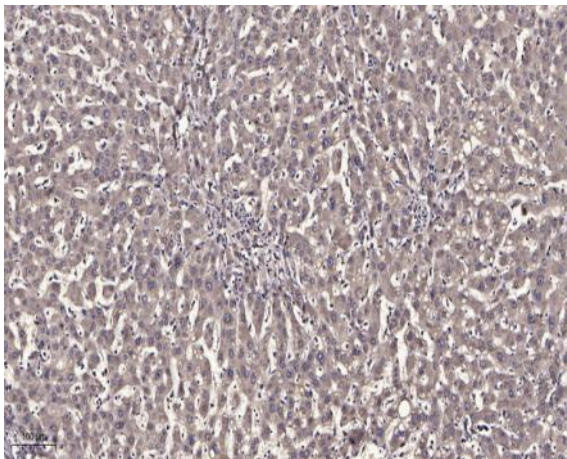
Products Images



Western Blot analysis of various cells using Rab L2A Polyclonal Antibody diluted at 1:500



Western Blot analysis of COLO205 cells using Rab L2A Polyclonal Antibody diluted at 1:500



Immunohistochemical analysis of paraffin-embedded human liver cancer. 1, Antibody was diluted at 1:200(4° overnight). 2, Tris-EDTA,pH9.0 was used for antigen retrieval. 3,Secondary antibody was diluted at 1:200(room temperature, 45min).