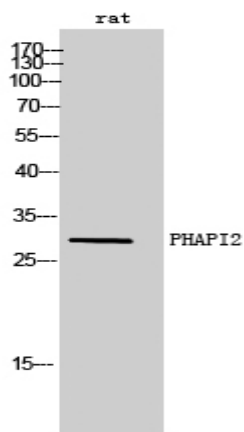


PHAPI2 Polyclonal Antibody

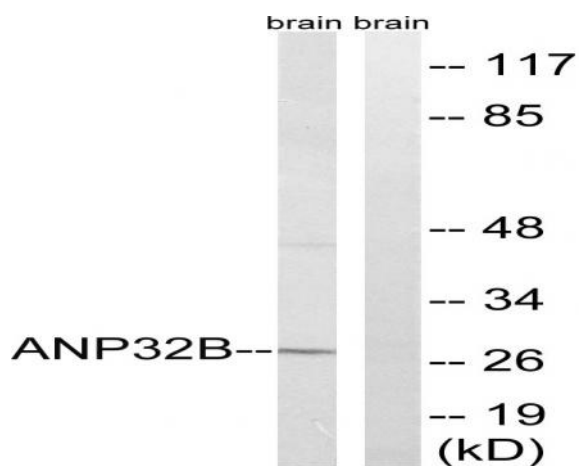
Catalog No :	YT3695
Reactivity :	Human;Mouse;Rat
Applications :	WB;ELISA;IHC
Target :	PHAPI2
Gene Name :	ANP32B
Protein Name :	Acidic leucine-rich nuclear phosphoprotein 32 family member B
Human Gene Id :	10541
Human Swiss Prot No :	Q92688
Mouse Gene Id :	67628
Mouse Swiss Prot No :	Q9EST5
Rat Gene Id :	170724
Rat Swiss Prot No :	Q9EST6
Immunogen :	The antiserum was produced against synthesized peptide derived from human ANP32B. AA range:1-50
Specificity :	PHAPI2 Polyclonal Antibody detects endogenous levels of PHAPI2 protein.
Formulation :	Liquid in PBS containing 50% glycerol, 0.5% BSA and 0.02% sodium azide.
Source :	Polyclonal, Rabbit,IgG
Dilution :	WB 1:500-2000;IHC 1:50-300; ELISA 2000-20000
Purification :	The antibody was affinity-purified from rabbit antiserum by affinity-chromatography using epitope-specific immunogen.

Concentration :	1 mg/ml
Storage Stability :	-15°C to -25°C/1 year(Do not lower than -25°C)
Observed Band :	29kD
Background :	function:Multifunctional protein working as a cell cycle progression factor as well as a cell survival factor. Required for the progression from the G1 to the S phase. Anti-apoptotic protein which functions as a caspase-3 inhibitor. Has no phosphatase 2A (PP2A) inhibitor activity.,similarity:Belongs to the ANP32 family.,similarity:Contains 4 LRR (leucine-rich) repeats.,subcellular location:Accumulates in the nuclei at the S phase.,tissue specificity:Expressed in heart, lung, pancreas, prostate and in spleen, thymus and placenta.,
Function :	function:Multifunctional protein working as a cell cycle progression factor as well as a cell survival factor. Required for the progression from the G1 to the S phase. Anti-apoptotic protein which functions as a caspase-3 inhibitor. Has no phosphatase 2A (PP2A) inhibitor activity.,similarity:Belongs to the ANP32 family.,similarity:Contains 4 LRR (leucine-rich) repeats.,subcellular location:Accumulates in the nuclei at the S phase.,tissue specificity:Expressed in heart, lung, pancreas, prostate and in spleen, thymus and placenta.,
Subcellular Location :	[Isoform 1]: Nucleus . Cytoplasm . Accumulates in the nuclei at the S phase. . ; [Isoform 2]: Cytoplasm. Lacks a nuclear localization signal.
Expression :	Expressed in heart, lung, pancreas, prostate and in spleen, thymus and placenta.
Sort :	11879
No4 :	1
Host :	Rabbit
Modifications :	Unmodified

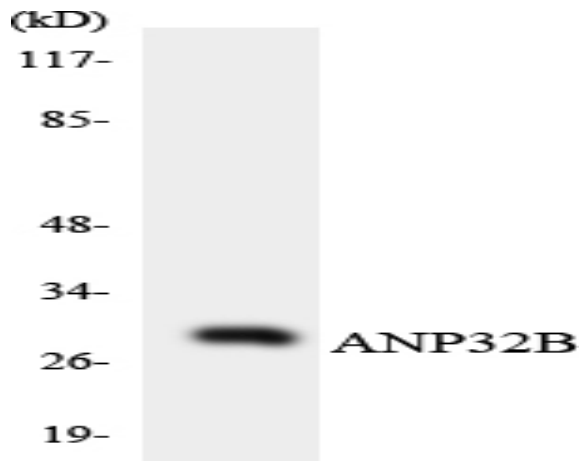
Products Images



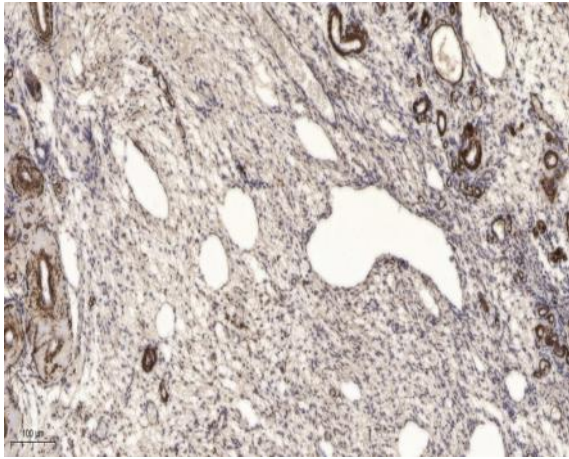
Western Blot analysis of rat cells using PHAPI2 Polyclonal Antibody cells nucleus extracted by Minute TM Cytoplasmic and Nuclear Fractionation kit (SC-003, Inventbiotech, MN, USA).



Western blot analysis of lysates from rat brain cells, using ANP32B Antibody. The lane on the right is blocked with the synthesized peptide.



Western blot analysis of the lysates from HeLa cells using ANP32B antibody.



Immunohistochemical analysis of paraffin-embedded human oophoroma. 1, Antibody was diluted at 1:200(4° overnight). 2, Tris-EDTA,pH9.0 was used for antigen retrieval. 3,Secondary antibody was diluted at 1:200(room temperature, 45min).