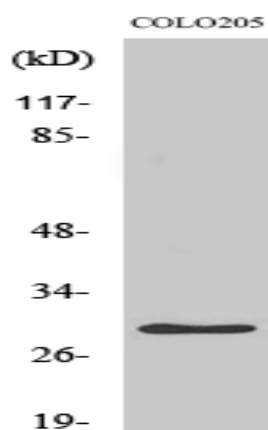


## PGLS Polyclonal Antibody

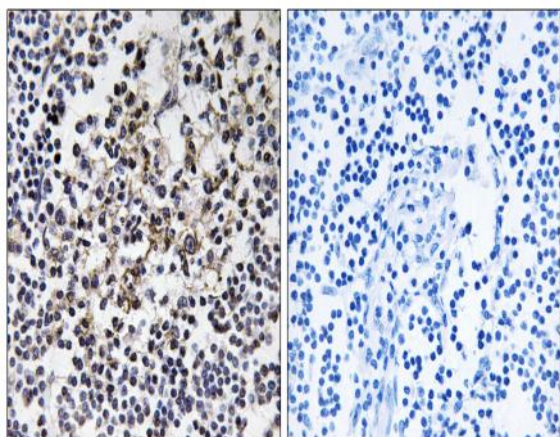
<b>Catalog No :</b>	YT3691
<b>Reactivity :</b>	Human;Rat;Mouse;
<b>Applications :</b>	WB;IHC;IF;ELISA
<b>Target :</b>	PGLS
<b>Fields :</b>	>>Pentose phosphate pathway;>>Metabolic pathways;>>Carbon metabolism
<b>Gene Name :</b>	PGLS
<b>Protein Name :</b>	6-phosphogluconolactonase
<b>Human Gene Id :</b>	25796
<b>Human Swiss Prot No :</b>	O95336
<b>Mouse Swiss Prot No :</b>	Q9CQ60
<b>Immunogen :</b>	The antiserum was produced against synthesized peptide derived from human PGLS. AA range:191-240
<b>Specificity :</b>	PGLS Polyclonal Antibody detects endogenous levels of PGLS protein.
<b>Formulation :</b>	Liquid in PBS containing 50% glycerol, 0.5% BSA and 0.02% sodium azide.
<b>Source :</b>	Polyclonal, Rabbit,IgG
<b>Dilution :</b>	WB 1:500 - 1:2000. IHC 1:100 - 1:300. ELISA: 1:40000.. IF 1:50-200
<b>Purification :</b>	The antibody was affinity-purified from rabbit antiserum by affinity-chromatography using epitope-specific immunogen.
<b>Concentration :</b>	1 mg/ml
<b>Storage Stability :</b>	-15°C to -25°C/1 year(Do not lower than -25°C)

<b>Observed Band :</b>	30kD
<b>Cell Pathway :</b>	Pentose phosphate pathway;
<b>Background :</b>	catalytic activity:6-phospho-D-glucono-1,5-lactone + H(2)O = 6-phospho-D-gluconate.,function:Hydrolysis of 6-phosphogluconolactone to 6-phosphogluconate.,pathway:Carbohydrate degradation; pentose phosphate pathway; D-ribulose 5-phosphate from D-glucose 6-phosphate (oxidative stage): step 2/3.,similarity:Belongs to the glucosamine/galactosamine-6-phosphate isomerase family. 6-phosphogluconolactonase subfamily.,
<b>Function :</b>	catalytic activity:6-phospho-D-glucono-1,5-lactone + H(2)O = 6-phospho-D-gluconate.,function:Hydrolysis of 6-phosphogluconolactone to 6-phosphogluconate.,pathway:Carbohydrate degradation; pentose phosphate pathway; D-ribulose 5-phosphate from D-glucose 6-phosphate (oxidative stage): step 2/3.,similarity:Belongs to the glucosamine/galactosamine-6-phosphate isomerase family. 6-phosphogluconolactonase subfamily.,
<b>Subcellular Location :</b>	Cytoplasm .
<b>Expression :</b>	Brain,Cajal-Retzius cell,Fetal brain cortex,Uterus,
<b>Sort :</b>	11868
<b>No4 :</b>	1
<b>Host :</b>	Rabbit
<b>Modifications :</b>	Unmodified

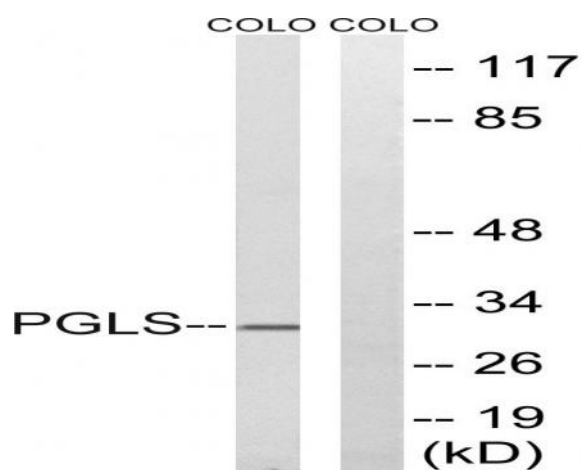
## Products Images



Western Blot analysis of various cells using PGLS Polyclonal Antibody



Immunohistochemistry analysis of paraffin-embedded human lymph node tissue, using PGLS Antibody. The picture on the right is blocked with the synthesized peptide.



Western blot analysis of lysates from COLO cells, using PGLS Antibody. The lane on the right is blocked with the synthesized peptide.