

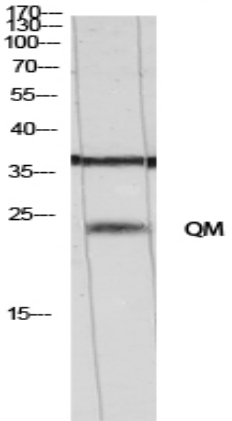
QM Polyclonal Antibody

Catalog No :	YT3916
Reactivity :	Human;Mouse;Rat;Cat
Applications :	WB;IHC
Target :	QM
Fields :	>>Ribosome;>>Coronavirus disease - COVID-19
Gene Name :	RPL10
Protein Name :	60S ribosomal protein L10
Human Gene Id :	6134
Human Swiss Prot No :	P27635
Mouse Gene Id :	110954
Mouse Swiss Prot No :	Q6ZWW3
Rat Gene Id :	81764
Rat Swiss Prot No :	Q6PDV7
Immunogen :	The antiserum was produced against synthesized peptide derived from human 60S Ribosomal Protein L10. AA range:1-50
Specificity :	QM Polyclonal Antibody detects endogenous levels of QM protein.
Formulation :	Liquid in PBS containing 50% glycerol, 0.5% BSA and 0.02% sodium azide.
Source :	Polyclonal, Rabbit,IgG
Dilution :	WB 1:500-2000;IHC 1:50-300

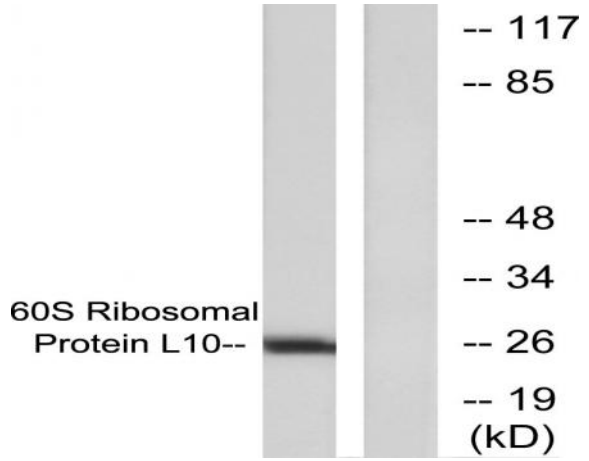
Purification :	The antibody was affinity-purified from rabbit antiserum by affinity-chromatography using epitope-specific immunogen.
Concentration :	1 mg/ml
Storage Stability :	-15°C to -25°C/1 year(Do not lower than -25°C)
Observed Band :	25kD
Cell Pathway :	Ribosome;
Background :	This gene encodes a ribosomal protein that is a component of the 60S ribosome subunit. The related protein in chicken can bind to c-Jun and can repress c-Jun-mediated transcriptional activation. Some studies have detected an association between variation in this gene and autism spectrum disorders, though others do not detect this relationship. There are multiple pseudogenes of this gene dispersed throughout the genome. Alternative splicing results in multiple transcript variants. [provided by RefSeq, Jan 2015],
Function :	developmental stage:Down-regulated during adipocyte, kidney, and heart differentiation.,disease:Defects in RPL10 may be the cause of susceptibility to X-linked autism [MIM:209850]. Autism is a pervasive developmental disorder (PDD), prototypically characterized by impairments in reciprocal social interaction and communication, restricted and stereotyped patterns of interests and activities, and the presence of developmental abnormalities by 3 years of age.,similarity:Belongs to the ribosomal protein L10e family.,
Subcellular Location :	endoplasmic reticulum,cytosol,ribosome,membrane,cytosolic large ribosomal subunit,
Expression :	Brain,Human lung,Mammary cancer,Mammary gland,Ovarian carcinoma,Pancreatic cancer,P
Tag :	orthogonal
Sort :	13203
No4 :	1
Host :	Rabbit
Modifications :	Unmodified

Products Images

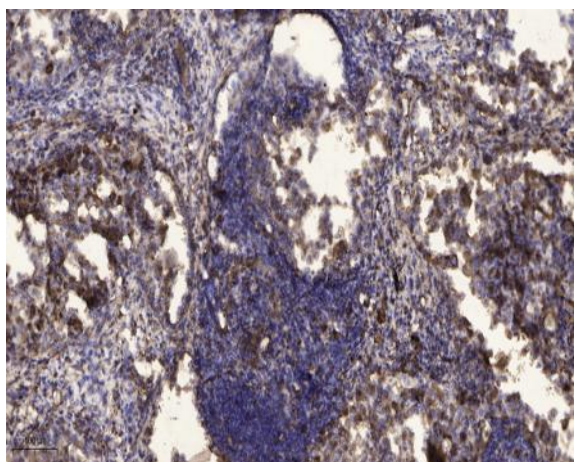
customer's (cat sample)



Western Blot analysis of customer's (cat sample) using QM Polyclonal Antibody diluted at 1:500



Western blot analysis of lysates from K562 cells, treated with Insulin 0.01u/ml 15min, using 60S Ribosomal Protein L10 Antibody. The lane on the right is blocked with the synthesized peptide.



Immunohistochemical analysis of paraffin-embedded human Squamous cell carcinoma of lung. 1, Antibody was diluted at 1:200(4° overnight). 2, Tris-EDTA,pH9.0 was used for antigen retrieval. 3,Secondary antibody was diluted at 1:200(room temperature, 45min).