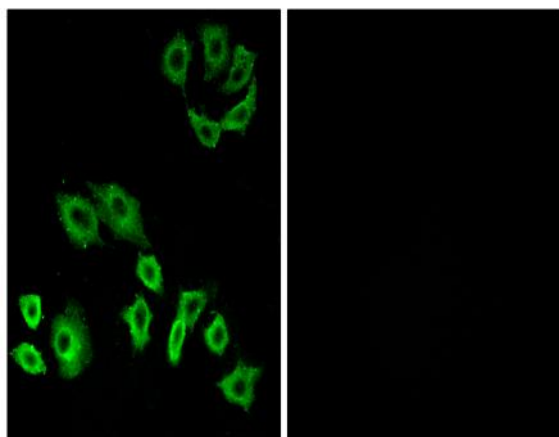


Rho H Polyclonal Antibody

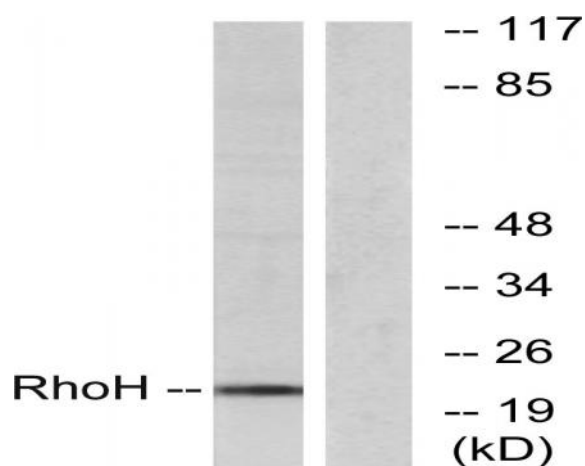
Catalog No :	YT4083
Reactivity :	Human;Mouse;Rat
Applications :	WB;IHC;IF;ELISA
Target :	Rho H
Fields :	>>Leukocyte transendothelial migration;>>Salmonella infection
Gene Name :	RhoH
Protein Name :	Rho-related GTP-binding protein RhoH
Human Gene Id :	399
Human Swiss Prot No :	Q15669
Mouse Gene Id :	74734
Mouse Swiss Prot No :	Q9D3G9
Immunogen :	The antiserum was produced against synthesized peptide derived from human RhoH. AA range:141-190
Specificity :	Rho H Polyclonal Antibody detects endogenous levels of Rho H protein.
Formulation :	Liquid in PBS containing 50% glycerol, 0.5% BSA and 0.02% sodium azide.
Source :	Polyclonal, Rabbit,IgG
Dilution :	WB 1:500 - 1:2000. IHC 1:100 - 1:300. IF 1:200 - 1:1000. ELISA: 1:20000. Not yet tested in other applications.
Purification :	The antibody was affinity-purified from rabbit antiserum by affinity-chromatography using epitope-specific immunogen.
Concentration :	1 mg/ml

Storage Stability :	-15°C to -25°C/1 year(Do not lower than -25°C)
Observed Band :	21kD
Cell Pathway :	Leukocyte transendothelial migration;
Background :	The protein encoded by this gene is a member of the Ras superfamily of guanosine triphosphate (GTP)-metabolizing enzymes. The encoded protein is expressed in hematopoietic cells, where it functions as a negative regulator of cell growth and survival. This gene may be hypermutated or misexpressed in leukemias and lymphomas. Chromosomal translocations in non-Hodgkin's lymphoma occur between this locus and B-cell CLL/lymphoma 6 (BCL6) on chromosome 3, leading to the production of fusion transcripts. Alternative splicing in the 5' untranslated region results in multiple transcript variants that encode the same protein. [provided by RefSeq, May 2013],
Function :	disease:A chromosomal aberration involving RHOH is found in a non-Hodgkin lymphoma cell line. Translocation t(3;4)(q27;p11) with BCL6.,similarity:Belongs to the small GTPase superfamily. Rho family.,tissue specificity:Transcribed only in hemopoietic cells.,
Subcellular Location :	Cytoplasm . Cell membrane ; Lipid-anchor ; Cytoplasmic side . Colocalizes together with ZAP70 in the immunological synapse. .
Expression :	Expressed only in hematopoietic cells. Present at very high levels in the thymus, less abundant in the spleen, and least abundant in the bone marrow. Expressed at a higher level in the TH1 subtype of T-helper cells than in the TH2 subpopulation. Expressed in neutrophils under inflammatory conditions, such as cystic fibrosis, ulcerative colitis and appendicitis.
Sort :	14449
No4 :	1
Host :	Rabbit
Modifications :	Unmodified

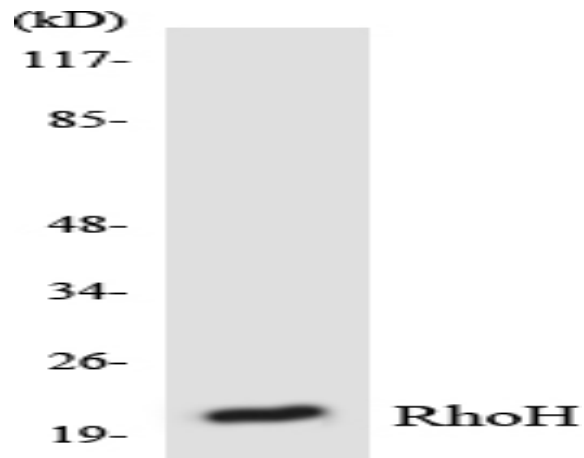
Products Images



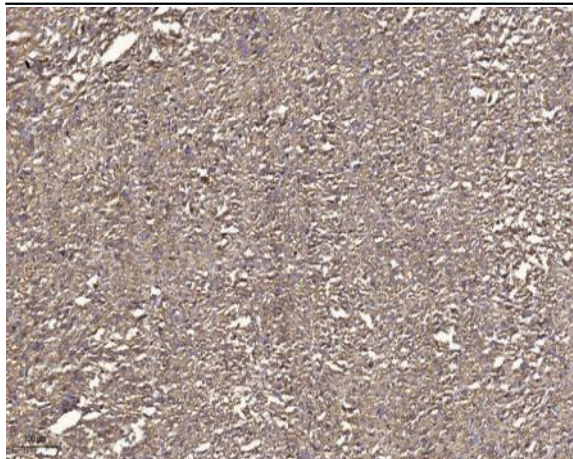
Immunofluorescence analysis of A549 cells, using RhoH Antibody. The picture on the right is blocked with the synthesized peptide.



Western blot analysis of lysates from HT-29 cells, using RhoH Antibody. The lane on the right is blocked with the synthesized peptide.



Western blot analysis of the lysates from RAW264.7 cells using RhoH antibody.



Immunohistochemical analysis of paraffin-embedded human small intestinal carcinoma tissue. 1,primary Antibody was diluted at 1:200(4° overnight). 2, Sodium citrate pH 6.0 was used for antigen retrieval(>98°C,20min). 3,Secondary antibody was diluted at 1:200