

PEDF Polyclonal Antibody

Catalog No :	YT3658
Reactivity :	Human;Mouse;Rat
Applications :	IHC;IF;WB;ELISA
Target :	PEDF
Fields :	>>Wnt signaling pathway
Gene Name :	SERPINF1
Protein Name :	Pigment epithelium-derived factor
Human Gene Id :	5176
Human Swiss Prot No :	P36955
Mouse Gene Id :	20317
Mouse Swiss Prot No :	P97298
Immunogen :	The antiserum was produced against synthesized peptide derived from human PEDF. AA range:258-307
Specificity :	PEDF Polyclonal Antibody detects endogenous levels of PEDF protein.
Formulation :	Liquid in PBS containing 50% glycerol, 0.5% BSA and 0.02% sodium azide.
Source :	Polyclonal, Rabbit,IgG
Dilution :	WB 1:500 - 1:2000. IHC: 1:100-300 ELISA: 1:20000. IF 1:100-300 Not yet tested in other applications.
Purification :	The antibody was affinity-purified from rabbit antiserum by affinity-chromatography using epitope-specific immunogen.
Concentration :	1 mg/ml

Storage Stability : -15°C to -25°C/1 year(Do not lower than -25°C)

Observed Band : 46kD

Background : This gene encodes a member of the serpin family that does not display the serine protease inhibitory activity shown by many of the other serpin proteins. The encoded protein is secreted and strongly inhibits angiogenesis. In addition, this protein is a neurotrophic factor involved in neuronal differentiation in retinoblastoma cells. Mutations in this gene were found in individuals with osteogenesis imperfecta, type VI. [provided by RefSeq, Aug 2016],

Function : developmental stage:Expressed in quiescent cells.,domain:The N-terminal (AA 44-121) exhibits neurite outgrowth-inducing activity. The C-terminal exposed loop (AA 382-418) is essential for serpin activity.,function:Neurotrophic protein; induces extensive neuronal differentiation in retinoblastoma cells. Potent inhibitor of angiogenesis. As it does not undergo the S (stressed) to R (relaxed) conformational transition characteristic of active serpins, it exhibits no serine protease inhibitory activity.,PTM:The N-terminus is blocked. Extracellular phosphorylation enhances antiangiogenic activity.,similarity:Belongs to the serpin family.,subcellular location:Enriched in stage I melanosomes.,tissue specificity:Retinal pigment epithelial cells and blood plasma.,

Subcellular Location : Secreted . Melanosome . Enriched in stage I melanosomes.

Expression : Retinal pigment epithelial cells and blood plasma.

Tag : orthogonal

Sort : 1459

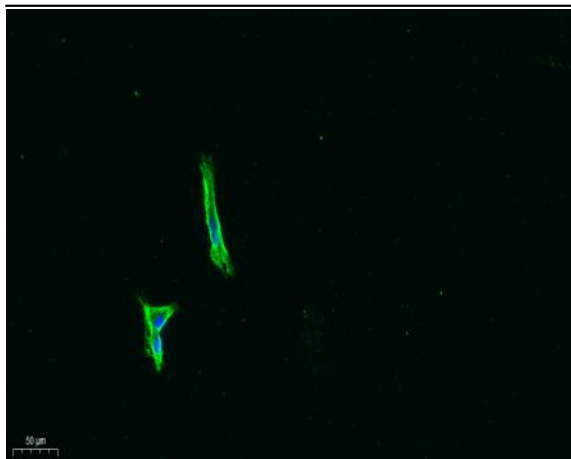
No3 : ab157207

No4 : 1

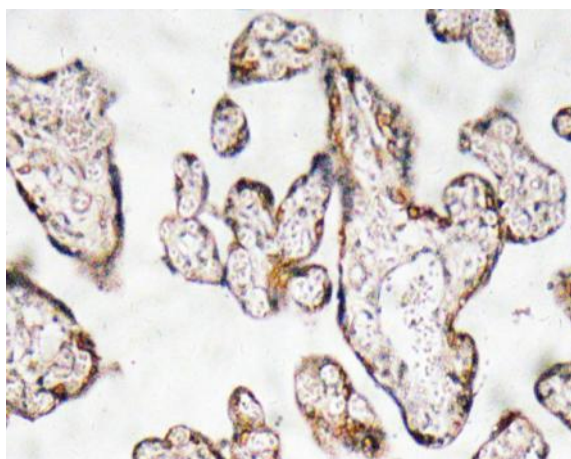
Host : Rabbit

Modifications : Unmodified

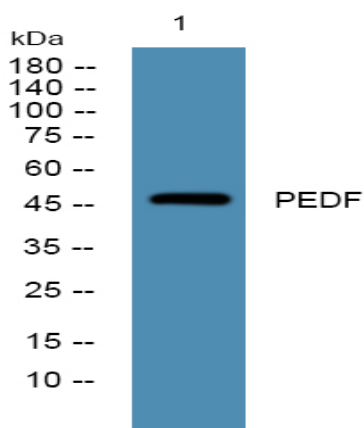
Products Images



Immunofluorescence analysis of A549. 1, primary Antibody was diluted at 1:200(4°C overnight). 2, Goat Anti Rabbit IgG (H&L) - Alexa Fluor 488 Secondary antibody was diluted at 1:1000(room temperature, 50min).3, Picture B: DAPI(blue) 10min.



Immunohistochemistry analysis of PEDF antibody in paraffin-embedded human prostate carcinoma tissue.



Western blot analysis of lysates from A431 cells, primary antibody was diluted at 1:1000, 4° over night