

PDZK3 Polyclonal Antibody

Catalog No :	YT3651
Reactivity :	Human;Mouse;Rat
Applications :	IHC;IF;ELISA
Target :	PDZK3
Gene Name :	PDZD2
Protein Name :	PDZ domain-containing protein 2
Human Gene Id :	23037
Human Swiss Prot No :	O15018
Rat Gene Id :	65034
Rat Swiss Prot No :	Q9QZR8
Immunogen :	The antiserum was produced against synthesized peptide derived from human PDZD2. AA range:51-100
Specificity :	PDZK3 Polyclonal Antibody detects endogenous levels of PDZK3 protein.
Formulation :	Liquid in PBS containing 50% glycerol, 0.5% BSA and 0.02% sodium azide.
Source :	Polyclonal, Rabbit,IgG
Dilution :	IHC 1:100 - 1:300. IF 1:200 - 1:1000. ELISA: 1:10000. Not yet tested in other applications.
Purification :	The antibody was affinity-purified from rabbit antiserum by affinity-chromatography using epitope-specific immunogen.
Concentration :	1 mg/ml
Storage Stability :	-15°C to -25°C/1 year(Do not lower than -25°C)

Molecularweight : 302kD

Background : The protein encoded by this gene contains six PDZ domains and shares sequence similarity with pro-interleukin-16 (pro-IL-16). Like pro-IL-16, the encoded protein localizes to the endoplasmic reticulum and is thought to be cleaved by a caspase to produce a secreted peptide containing two PDZ domains. In addition, this gene is upregulated in primary prostate tumors and may be involved in the early stages of prostate tumorigenesis. [provided by RefSeq, Dec 2015],

Function : disease:May be associated with the early promotion of prostate tumoregenesis.,PTM:A secreted form is produced by caspase-mediated proteolytic cleavage.,similarity:Contains 1 PDZ (DHR) domain.,similarity:Contains 6 PDZ (DHR) domains.,subcellular location:At cell-cell contacts in lung epithelial cells.,subunit:Interacts with SCN10A, CTNND2 and PKP4.,tissue specificity:Expressed (at protein level) in prostate and many prostate tumors.,

Subcellular Location : Nucleus . Cytoplasm . Endoplasmic reticulum . At cell-cell contacts in lung epithelial cells. .; [Processed PDZ domain-containing protein 2]: Secreted .

Expression : Isoform 2 is expressed (at protein level) in prostate and many prostate tumors.

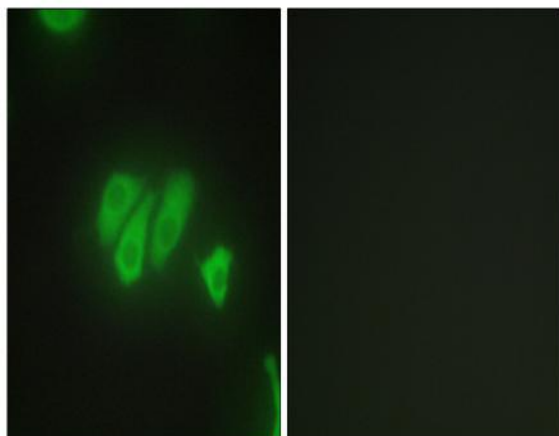
Sort : 11798

No4 : 1

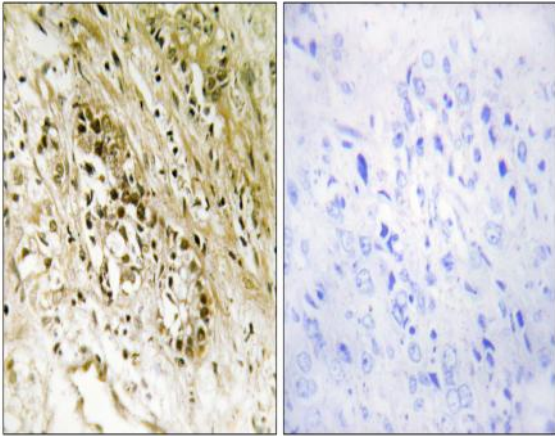
Host : Rabbit

Modifications : Unmodified

Products Images



Immunofluorescence analysis of HepG2 cells, using PDZD2 Antibody. The picture on the right is blocked with the synthesized peptide.



Immunohistochemistry analysis of paraffin-embedded human heart tissue, using PDZD2 Antibody. The picture on the right is blocked with the synthesized peptide.