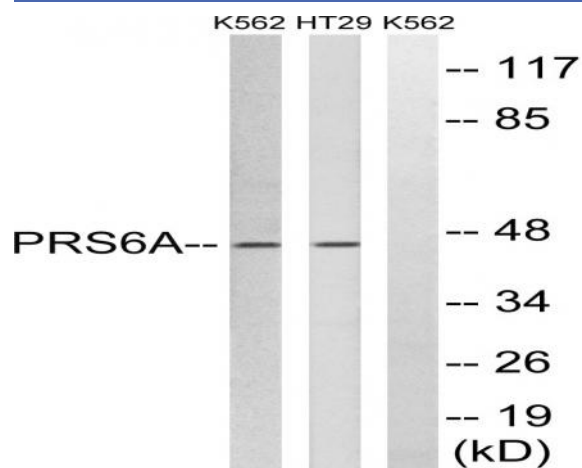


PSMC3 Polyclonal Antibody

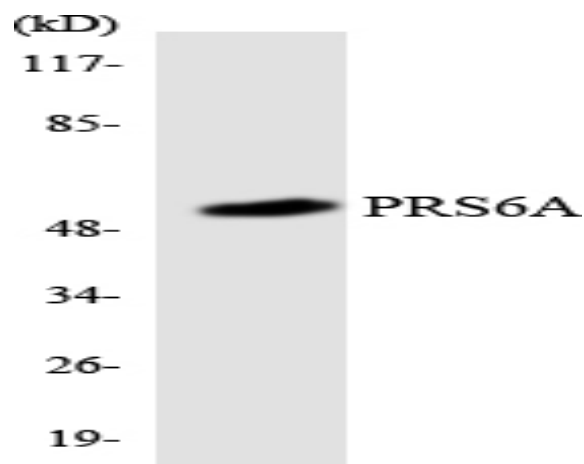
| | |
|------------------------------|---|
| Catalog No : | YT3884 |
| Reactivity : | Human;Mouse;Rat |
| Applications : | WB;IHC;IF;ELISA |
| Target : | PSMC3 |
| Fields : | >>Proteasome;>>Alzheimer disease;>>Parkinson disease;>>Amyotrophic lateral sclerosis;>>Huntington disease;>>Spinocerebellar ataxia;>>Prion disease;>>Pathways of neurodegeneration - multiple diseases;>>Epstein-Barr virus infection |
| Gene Name : | PSMC3 |
| Protein Name : | 26S protease regulatory subunit 6A |
| Human Gene Id : | 5702 |
| Human Swiss Prot No : | P17980 |
| Mouse Gene Id : | 19182 |
| Mouse Swiss Prot No : | O88685 |
| Rat Gene Id : | 29677 |
| Rat Swiss Prot No : | Q63569 |
| Immunogen : | The antiserum was produced against synthesized peptide derived from human PRS6A. AA range:271-320 |
| Specificity : | PSMC3 Polyclonal Antibody detects endogenous levels of PSMC3 protein. |
| Formulation : | Liquid in PBS containing 50% glycerol, 0.5% BSA and 0.02% sodium azide. |
| Source : | Polyclonal, Rabbit,IgG |

| | |
|-------------------------------|---|
| Dilution : | WB 1:500 - 1:2000. IHC 1:100 - 1:300. ELISA: 1:40000.. IF 1:50-200 |
| Purification : | The antibody was affinity-purified from rabbit antiserum by affinity-chromatography using epitope-specific immunogen. |
| Concentration : | 1 mg/ml |
| Storage Stability : | -15°C to -25°C/1 year(Do not lower than -25°C) |
| Observed Band : | 45kD |
| Cell Pathway : | Proteasome; |
| Background : | proteasome 26S subunit, ATPase 3(PSMC3) Homo sapiens The 26S proteasome is a multicatalytic proteinase complex with a highly ordered structure composed of 2 complexes, a 20S core and a 19S regulator. The 20S core is composed of 4 rings of 28 non-identical subunits; 2 rings are composed of 7 alpha subunits and 2 rings are composed of 7 beta subunits. The 19S regulator is composed of a base, which contains 6 ATPase subunits and 2 non-ATPase subunits, and a lid, which contains up to 10 non-ATPase subunits. Proteasomes are distributed throughout eukaryotic cells at a high concentration and cleave peptides in an ATP/ubiquitin-dependent process in a non-lysosomal pathway. An essential function of a modified proteasome, the immunoproteasome, is the processing of class I MHC peptides. This gene encodes one of the ATPase subunits, a member of the triple-A family of ATPases that have chaperone-like activity. This subunit may compete with PSMC2 for bindi |
| Function : | function:The 26S protease is involved in the ATP-dependent degradation of ubiquitinated proteins. The regulatory (or ATPase) complex confers ATP dependency and substrate specificity to the 26S complex (By similarity). In case of HIV-1 infection, suppresses Tat-mediated transactivation.,PTM:Sumoylated by UBE2I in response to MEKK1-mediated stimuli.,similarity:Belongs to the AAA ATPase family.,subunit:May form a heterodimer with a related family member. Interacts with PAAF1. Interacts with HIV-1 Tat., |
| Subcellular Location : | Cytoplasm . Nucleus . Colocalizes with TRIM5 in the cytoplasmic bodies. . |
| Expression : | Adipose tissue,Brain,Cajal-Retzius cell,Fetal brain cortex,Kidney,Lung,Peri |
| Sort : | 13124 |
| No4 : | 1 |
| Host : | Rabbit |

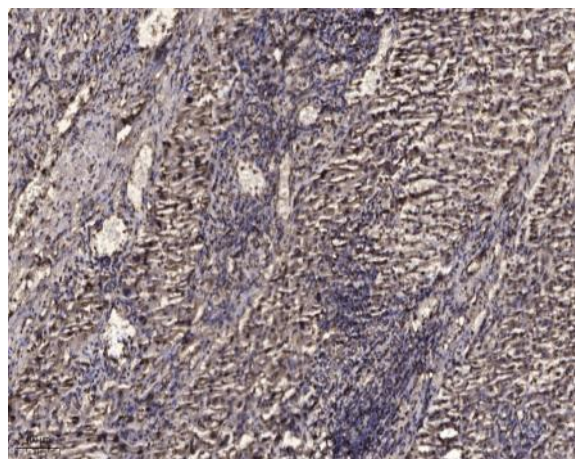
Products Images



Western blot analysis of lysates from K562 and HT-29 cells, using PRS6A Antibody. The lane on the right is blocked with the synthesized peptide.



Western blot analysis of the lysates from HT-29 cells using PRS6A antibody.



Immunohistochemical analysis of paraffin-embedded human liver cancer. 1, Antibody was diluted at 1:200(4° overnight). 2, Tris-EDTA,pH9.0 was used for antigen retrieval. 3,Secondary antibody was diluted at 1:200(room temperature, 45min).