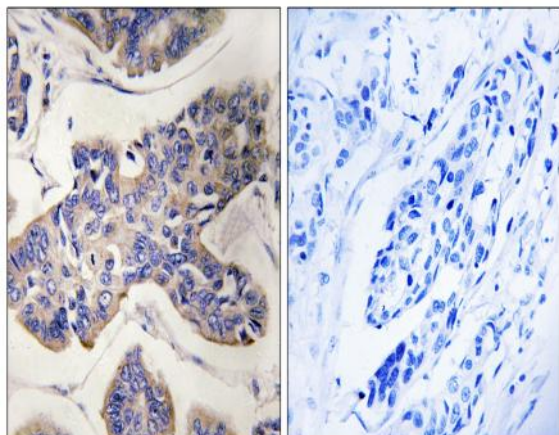


PSK2 Polyclonal Antibody

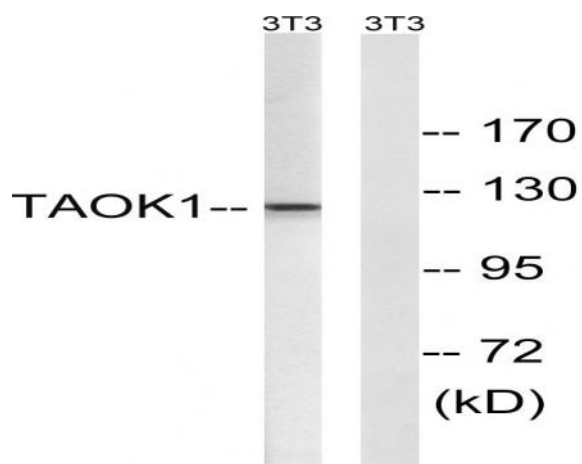
Catalog No :	YT3882
Reactivity :	Human;Mouse;Rat
Applications :	WB;IHC;IF;ELISA
Target :	PSK2
Fields :	>>MAPK signaling pathway
Gene Name :	TAOK1
Protein Name :	Serine/threonine-protein kinase TAO1
Human Gene Id :	57551
Human Swiss Prot No :	Q7L7X3
Mouse Gene Id :	216965
Mouse Swiss Prot No :	Q5F2E8
Rat Gene Id :	286993
Rat Swiss Prot No :	O88664
Immunogen :	The antiserum was produced against synthesized peptide derived from human TAOK1. AA range:431-480
Specificity :	PSK2 Polyclonal Antibody detects endogenous levels of PSK2 protein.
Formulation :	Liquid in PBS containing 50% glycerol, 0.5% BSA and 0.02% sodium azide.
Source :	Polyclonal, Rabbit,IgG
Dilution :	WB 1:500 - 1:2000. IHC 1:100 - 1:300. ELISA: 1:5000.. IF 1:50-200

Purification :	The antibody was affinity-purified from rabbit antiserum by affinity-chromatography using epitope-specific immunogen.
Concentration :	1 mg/ml
Storage Stability :	-15°C to -25°C/1 year(Do not lower than -25°C)
Observed Band :	120kD
Cell Pathway :	MAPK_ERK_Growth;MAPK_G_Protein;
Background :	<p>catalytic activity:ATP + a protein = ADP + a phosphoprotein.,function:Phosphorylates MKK3 (By similarity). Activates the p38 MAP kinase pathway through the specific activation of the upstream MKK3 kinase.,PTM:Autophosphorylated.,similarity:Belongs to the protein kinase superfamily. STE Ser/Thr protein kinase family. STE20 subfamily.,similarity:Contains 1 protein kinase domain.,subunit:Self-associates. Interacts with MKK3.,tissue specificity:Highly expressed in the testis, and to a lower extent also expressed in brain, placenta, colon and skeletal muscle.,</p>
Function :	<p>catalytic activity:ATP + a protein = ADP + a phosphoprotein.,function:Phosphorylates MKK3 (By similarity). Activates the p38 MAP kinase pathway through the specific activation of the upstream MKK3 kinase.,PTM:Autophosphorylated.,similarity:Belongs to the protein kinase superfamily. STE Ser/Thr protein kinase family. STE20 subfamily.,similarity:Contains 1 protein kinase domain.,subunit:Self-associates. Interacts with MKK3.,tissue specificity:Highly expressed in the testis, and to a lower extent also expressed in brain, placenta, colon and skeletal muscle.,</p>
Subcellular Location :	Cytoplasm .
Expression :	Highly expressed in the testis, and to a lower extent also expressed in brain, placenta, colon and skeletal muscle.
Sort :	13119
No4 :	1
Host :	Rabbit
Modifications :	Unmodified

[Products Images](#)



Immunohistochemistry analysis of paraffin-embedded human breast carcinoma tissue, using TAOK1 Antibody. The picture on the right is blocked with the synthesized peptide.



Western blot analysis of lysates from NIH/3T3 cells, using TAOK1 Antibody. The lane on the right is blocked with the synthesized peptide.