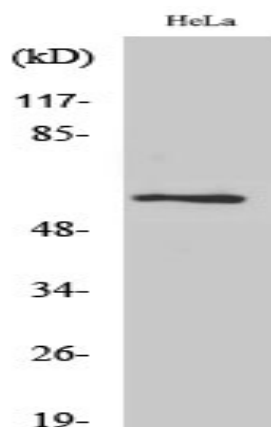


## Pdcd-4 Polyclonal Antibody

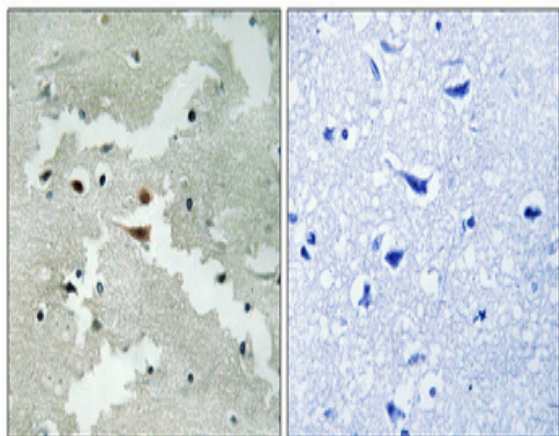
|                              |  |
|------------------------------|--|
| <b>Catalog No :</b>          | YT3625   |
| <b>Reactivity :</b>          | Human;Mouse;Rat  |
| <b>Applications :</b>        | WB;IHC;IF;ELISA  |
| <b>Target :</b>              | PDCD4  |
| <b>Fields :</b>              | >>Proteoglycans in cancer;>>MicroRNAs in cancer  |
| <b>Gene Name :</b>           | PDCD4  |
| <b>Protein Name :</b>        | Programmed cell death protein 4  |
| <b>Human Gene Id :</b>       | 27250  |
| <b>Human Swiss Prot No :</b> | Q53EL6   |
| <b>Mouse Gene Id :</b>       | 18569  |
| <b>Mouse Swiss Prot No :</b> | Q61823   |
| <b>Rat Gene Id :</b>         | 64031  |
| <b>Rat Swiss Prot No :</b>   | Q9JID1   |
| <b>Immunogen :</b>           | The antiserum was produced against synthesized peptide derived from human PDCD4. AA range:420-469              |
| <b>Specificity :</b>         | Pdcd-4 Polyclonal Antibody detects endogenous levels of Pdcd-4 protein.  |
| <b>Formulation :</b>         | Liquid in PBS containing 50% glycerol, 0.5% BSA and 0.02% sodium azide.  |
| <b>Source :</b>              | Polyclonal, Rabbit,IgG   |
| <b>Dilution :</b>            | WB 1:500 - 1:2000. IHC 1:100 - 1:300. IF 1:200 - 1:1000. ELISA: 1:20000. Not yet tested in other applications. |

|                               |  |
|-------------------------------|--|
| <b>Purification :</b>         | The antibody was affinity-purified from rabbit antiserum by affinity-chromatography using epitope-specific immunogen.  |
| <b>Concentration :</b>        | 1 mg/ml  |
| <b>Storage Stability :</b>    | -15°C to -25°C/1 year(Do not lower than -25°C)   |
| <b>Observed Band :</b>        | 51kD   |
| <b>Background :</b>           | This gene is a tumor suppressor and encodes a protein that binds to the eukaryotic translation initiation factor 4A1 and inhibits its function by preventing RNA binding. Alternative splicing results in multiple transcript variants. [provided by RefSeq, Dec 2010],  |
| <b>Function :</b>             | caution:The sequence shown here is derived from an Ensembl automatic analysis pipeline and should be considered as preliminary data.,disease:Loss of expression correlated with tumor progression of lung and colon carcinoma.,domain:Binds EIF4A1 via the MA3 domains.,function:Tumor suppressor. Inhibits tumor promoter-induced neoplastic transformation. Down-regulates the expression of MAP4K1, thus inhibiting events important in driving invasion, namely, MAPK85 activation and consequent JUN-dependent transcription. May play a role in apoptosis. Inhibits the helicase activity of EIF4A and cap-dependent translation. Binds RNA.,induction:IL2 stimulation inhibits expression, while IL12 increases expression.,sequence caution:Contaminating sequence. Potential poly-A sequence.,similarity:Belongs to the PDCD4 family.,similarity:Contains 2 MI domains.,subcellular location:Shuttles between the nucleus a |
| <b>Subcellular Location :</b> | Nucleus . Cytoplasm . Shuttles between the nucleus and cytoplasm (By similarity). Predominantly nuclear under normal growth conditions, and when phosphorylated at Ser-457 (PubMed:16357133). .  |
| <b>Expression :</b>           | Up-regulated in proliferative cells. Highly expressed in epithelial cells of the mammary gland. Reduced expression in lung cancer and colon carcinoma.   |
| <b>Sort :</b>                 | 11736  |
| <b>No4 :</b>                  | 1  |
| <b>Host :</b>                 | Rabbit   |
| <b>Modifications :</b>        | Unmodified   |

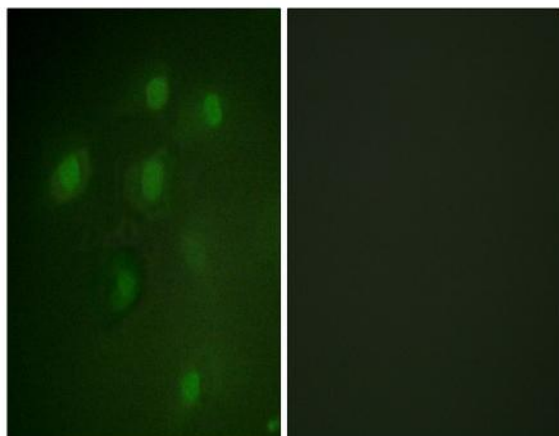
## Products Images



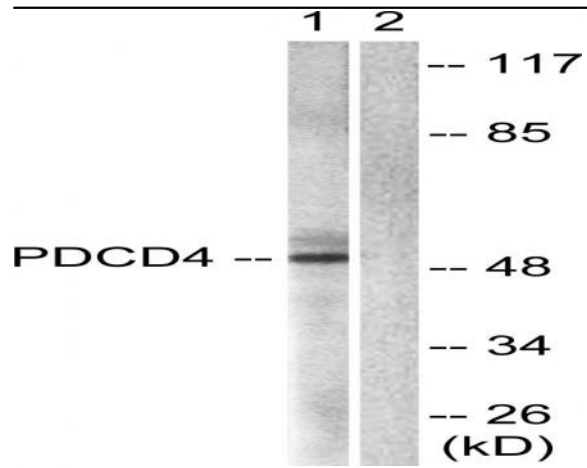
Western Blot analysis of various cells using Pdccl-4 Polyclonal Antibody



Immunohistochemical analysis of paraffin-embedded Human brain. Antibody was diluted at 1:100(4° overnight). High-pressure and temperature Tris-EDTA,pH8.0 was used for antigen retrieval. Negative contrl (right) obtaned from antibody was pre-absorbed by immunogen peptide.



Immunofluorescence analysis of HeLa cells, using PDCD4 Antibody. The picture on the right is blocked with the synthesized peptide.



Western blot analysis of lysates from 293 cells, using PDCD4 Antibody. The lane on the right is blocked with the synthesized peptide.