

PC-PLD4 Polyclonal Antibody

Catalog No :	YT3622
Reactivity :	Human;Mouse;Rat
Applications :	WB;IHC
Target :	PLD4
Fields :	>>Glycerophospholipid metabolism;>>Ether lipid metabolism;>>Metabolic pathways
Gene Name :	PLD4
Protein Name :	Phospholipase D4
Human Gene Id :	122618
Human Swiss Prot No :	Q96BZ4
Mouse Gene Id :	104759
Mouse Swiss Prot No :	Q8BG07
Immunogen :	The antiserum was produced against synthesized peptide derived from human PLD4. AA range:457-506
Specificity :	PC-PLD4 Polyclonal Antibody detects endogenous levels of PC-PLD4 protein.
Formulation :	Liquid in PBS containing 50% glycerol, 0.5% BSA and 0.02% sodium azide.
Source :	Polyclonal, Rabbit,IgG
Dilution :	WB 1:500-2000;IHC 1:50-300
Purification :	The antibody was affinity-purified from rabbit antiserum by affinity-chromatography using epitope-specific immunogen.
Concentration :	1 mg/ml

Storage Stability : -15°C to -25°C/1 year(Do not lower than -25°C)

Observed Band : 50kD

Background : catalytic activity:A phosphatidylcholine + H(2)O = choline + a phosphatidate.,similarity:Belongs to the phospholipase D family.,similarity:Contains 2 PLD phosphodiesterase domains.,

Function : catalytic activity:A phosphatidylcholine + H(2)O = choline + a phosphatidate.,similarity:Belongs to the phospholipase D family.,similarity:Contains 2 PLD phosphodiesterase domains.,

Subcellular Location : Endoplasmic reticulum membrane ; Single-pass type II membrane protein . Golgi apparatus, trans-Golgi network membrane ; Single-pass type II membrane protein . Nucleus . Early endosome . Cytoplasmic vesicle, phagosome . Activation of microglia induces translocation of PLD4 from the nucleus to the phagosomes. .

Expression : B-cell,T-cell,

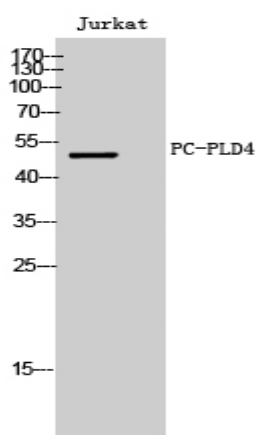
Sort : 11719

No4 : 1

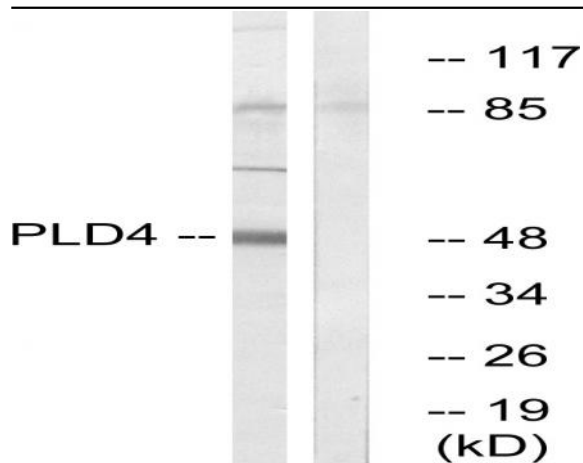
Host : Rabbit

Modifications : Unmodified

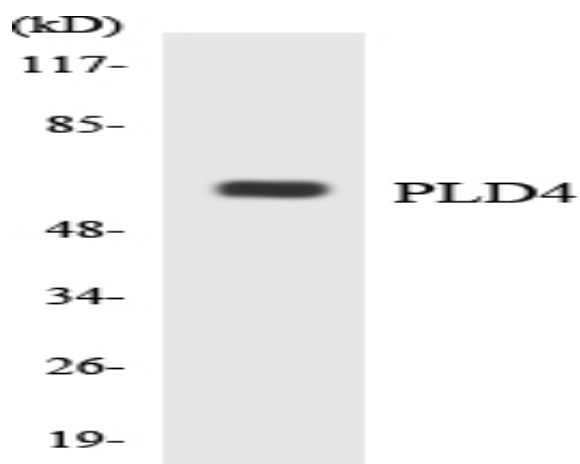
Products Images



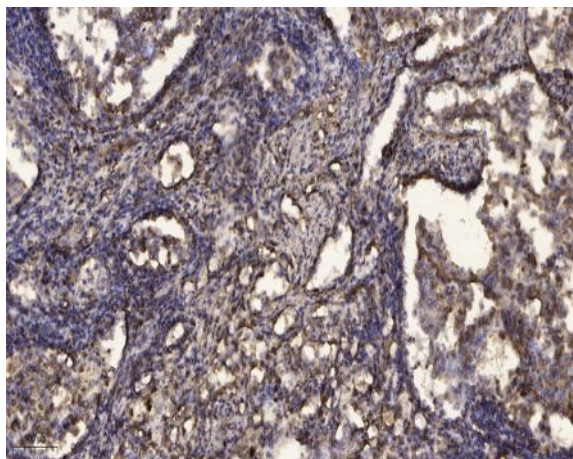
Western Blot analysis of Jurkat cells using PC-PLD4 Polyclonal Antibody



Western blot analysis of lysates from Jurkat cells, using PLD4 Antibody. The lane on the right is blocked with the synthesized peptide.



Western blot analysis of the lysates from K562 cells using PLD4 antibody.



Immunohistochemical analysis of paraffin-embedded human Squamous cell carcinoma of lung. 1, Antibody was diluted at 1:200(4° overnight). 2, Tris-EDTA,pH9.0 was used for antigen retrieval. 3,Secondary antibody was diluted at 1:200(room temperature, 45min).