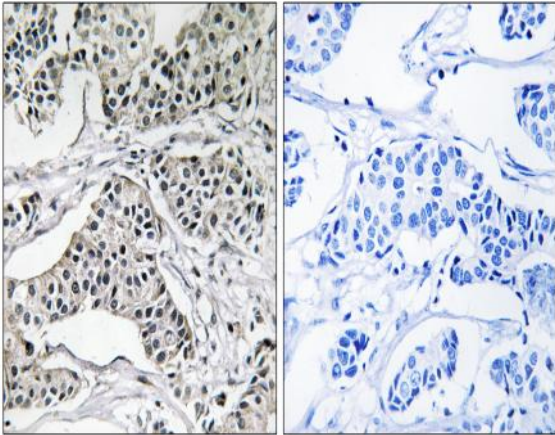


PC-PLD3 Polyclonal Antibody

Catalog No :	YT3621
Reactivity :	Human;Mouse;Rat
Applications :	IHC;IF;ELISA
Target :	PC-PLD3
Fields :	>>Glycerophospholipid metabolism;>>Ether lipid metabolism;>>Metabolic pathways
Gene Name :	PLD3
Protein Name :	Phospholipase D3
Human Gene Id :	23646
Human Swiss Prot No :	Q8IV08
Mouse Gene Id :	18807
Mouse Swiss Prot No :	O35405
Rat Gene Id :	361527
Rat Swiss Prot No :	Q5FVH2
Immunogen :	The antiserum was produced against synthesized peptide derived from human PLD3. AA range:326-375
Specificity :	PC-PLD3 Polyclonal Antibody detects endogenous levels of PC-PLD3 protein.
Formulation :	Liquid in PBS containing 50% glycerol, 0.5% BSA and 0.02% sodium azide.
Source :	Polyclonal, Rabbit,IgG
Dilution :	IHC 1:100 - 1:300. ELISA: 1:5000.. IF 1:50-200

Purification :	The antibody was affinity-purified from rabbit antiserum by affinity-chromatography using epitope-specific immunogen.
Concentration :	1 mg/ml
Storage Stability :	-15°C to -25°C/1 year(Do not lower than -25°C)
Molecularweight :	55kD
Background :	This gene encodes a member of the phospholipase D (PLD) family of enzymes that catalyze the hydrolysis of membrane phospholipids. The encoded protein is a single-pass type II membrane protein and contains two PLD phosphodiesterase domains. This protein influences processing of amyloid-beta precursor protein. Mutations in this gene are associated with Alzheimer disease risk. Alternatively spliced transcript variants encoding the same protein have been found for this gene. [provided by RefSeq, Apr 2014],
Function :	catalytic activity:A phosphatidylcholine + H(2)O = choline + a phosphatidate.,PTM:Glycosylated.,similarity:Belongs to the phospholipase D family.,similarity:Contains 2 PLD phosphodiesterase domains.,tissue specificity:Widely expressed. Expresses at higher level in brain. Expresses at low level in corpus callosum, suggesting that it is highly expressed in neurons.,
Subcellular Location :	Endoplasmic reticulum membrane ; Single-pass type II membrane protein . Lysosome lumen . Early endosome membrane ; Single-pass type II membrane protein . Late endosome membrane ; Single-pass type II membrane protein . Golgi apparatus membrane ; Single-pass type II membrane protein . Endosome membrane ; Single-pass type II membrane protein . Localizes to ER-associated vesicles in differentiating myotubes (PubMed:22428023). The soluble form in lysosome arises by proteolytic processing of the membrane-bound form (PubMed:29386126). Colocalizes with APP in endosomes (PubMed:29368044)..
Expression :	Widely expressed. In the brain, high levels of expression are detected in the frontal, temporal and occipital cortices and hippocampus. Expressed at low level in corpus callosum.
Sort :	11718
No4 :	1
Host :	Rabbit
Modifications :	Unmodified

Products Images



Immunohistochemistry analysis of paraffin-embedded human breast carcinoma tissue, using PLD3 Antibody. The picture on the right is blocked with the synthesized peptide.