

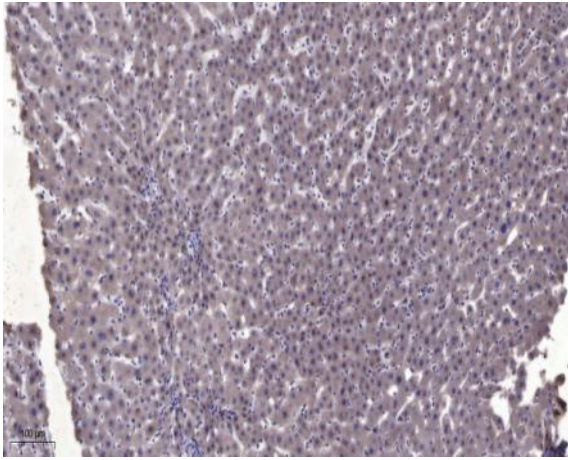
## PC-PLD2 Polyclonal Antibody

<b>Catalog No :</b>	YT3620
<b>Reactivity :</b>	Human;Mouse;Rat
<b>Applications :</b>	WB;ELISA;IHC
<b>Target :</b>	PC-PLD2
<b>Fields :</b>	>>Glycerophospholipid metabolism;>>Ether lipid metabolism;>>Metabolic pathways;>>Ras signaling pathway;>>cAMP signaling pathway;>>Sphingolipid signaling pathway;>>Phospholipase D signaling pathway;>>Endocytosis;>>Fc gamma R-mediated phagocytosis;>>Glutamatergic synapse;>>GnRH signaling pathway;>>Parathyroid hormone synthesis, secretion and action;>>Pathways in cancer;>>Chemical carcinogenesis - reactive oxygen species;>>Pancreatic cancer;>>Choline metabolism in cancer
<b>Gene Name :</b>	PLD2
<b>Protein Name :</b>	Phospholipase D2
<b>Human Gene Id :</b>	5338
<b>Human Swiss Prot No :</b>	O14939
<b>Mouse Gene Id :</b>	18806
<b>Mouse Swiss Prot No :</b>	P97813
<b>Rat Gene Id :</b>	25097
<b>Rat Swiss Prot No :</b>	P70498
<b>Immunogen :</b>	Synthesized peptide derived from PC-PLD2 . at AA range: 110-190
<b>Specificity :</b>	PC-PLD2 Polyclonal Antibody detects endogenous levels of PC-PLD2 protein.
<b>Formulation :</b>	Liquid in PBS containing 50% glycerol, 0.5% BSA and 0.02% sodium azide.

<b>Source :</b>	Polyclonal, Rabbit,IgG
<b>Dilution :</b>	WB 1:500-2000;IHC 1:50-300; ELISA 2000-20000
<b>Purification :</b>	The antibody was affinity-purified from rabbit antiserum by affinity-chromatography using epitope-specific immunogen.
<b>Concentration :</b>	1 mg/ml
<b>Storage Stability :</b>	-15°C to -25°C/1 year(Do not lower than -25°C)
<b>Observed Band :</b>	106kD
<b>Cell Pathway :</b>	Glycerophospholipid metabolism;Ether lipid metabolism;Endocytosis;Fc gamma R-mediated phagocytosis;GnRH;
<b>Background :</b>	The protein encoded by this gene catalyzes the hydrolysis of phosphatidylcholine to phosphatidic acid and choline. The activity of the encoded enzyme is enhanced by phosphatidylinositol 4,5-bisphosphate and ADP-ribosylation factor-1. This protein localizes to the peripheral membrane and may be involved in cytoskeletal organization, cell cycle control, transcriptional regulation, and/or regulated secretion. Two transcript variants encoding different isoforms have been found for this gene.[provided by RefSeq, Jul 2011],
<b>Function :</b>	catalytic activity:A phosphatidylcholine + H(2)O = choline + a phosphatidate.,enzyme regulation:Stimulated by phosphatidylinositol 4,5-bisphosphate and activated by the ADP-ribosylation factor-1 (ARF-1).,function:May have a role in signal-induced cytoskeletal regulation and/or endocytosis.,online information:Phospholipase D entry,similarity:Belongs to the phospholipase D family.,similarity:Contains 1 PH domain.,similarity:Contains 1 PX (phox homology) domain.,similarity:Contains 2 PLD phosphodiesterase domains.,subunit:Interacts with EGFR (By similarity). Interacts with PIP5K1A.,tissue specificity:Ubiquitous.,
<b>Subcellular Location :</b>	Cell membrane ; Lipid-anchor .
<b>Expression :</b>	Ubiquitous.
<b>Sort :</b>	11717
<b>No4 :</b>	1
<b>Host :</b>	Rabbit
<b>Modifications :</b>	Unmodified

---

## Products Images



Immunohistochemical analysis of paraffin-embedded human liver cancer. 1, Antibody was diluted at 1:200(4° overnight). 2, Tris-EDTA,pH9.0 was used for antigen retrieval. 3,Secondary antibody was diluted at 1:200(room temperature, 45min).