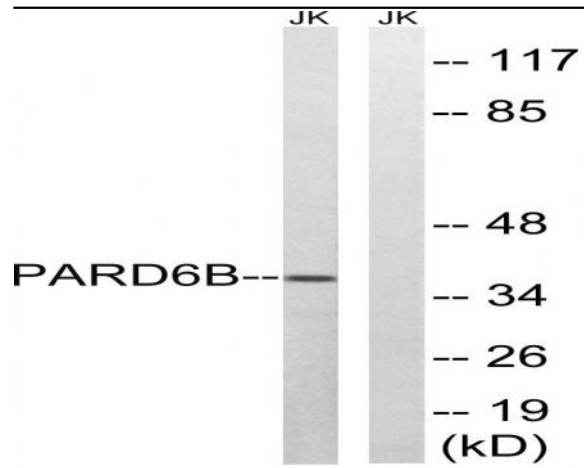


PAR-6 β Polyclonal Antibody

Catalog No :	YT3589
Reactivity :	Human;Mouse
Applications :	WB;IHC;IF;ELISA
Target :	PAR-6 β
Fields :	>>Rap1 signaling pathway;>>Endocytosis;>>Axon guidance;>>Hippo signaling pathway;>>Tight junction;>>Human papillomavirus infection
Gene Name :	PARD6B
Protein Name :	Partitioning defective 6 homolog beta
Human Gene Id :	84612
Human Swiss Prot No :	Q9BYG5
Mouse Gene Id :	58220
Mouse Swiss Prot No :	Q9JK83
Immunogen :	The antiserum was produced against synthesized peptide derived from human PARD6B. AA range:233-282
Specificity :	PAR-6 β Polyclonal Antibody detects endogenous levels of PAR-6 β protein.
Formulation :	Liquid in PBS containing 50% glycerol, 0.5% BSA and 0.02% sodium azide.
Source :	Polyclonal, Rabbit,IgG
Dilution :	WB 1:500 - 1:2000. IHC 1:100 - 1:300. ELISA: 1:5000.. IF 1:50-200
Purification :	The antibody was affinity-purified from rabbit antiserum by affinity-chromatography using epitope-specific immunogen.
Concentration :	1 mg/ml

Storage Stability :	-15°C to -25°C/1 year(Do not lower than -25°C)
Observed Band :	38kD
Cell Pathway :	Endocytosis;Tight junction;
Background :	This gene is a member of the PAR6 family and encodes a protein with a PSD95/Discs-large/ZO1 (PDZ) domain, an OPR domain and a semi-Cdc42/Rac interactive binding (CRIB) domain. This cytoplasmic protein is involved in asymmetrical cell division and cell polarization processes as a member of a multi-protein complex. [provided by RefSeq, Jul 2008],
Function :	domain:The PDZ domain mediates interaction with MPP5.,domain:The pseudo-CRIB domain together with the PDZ domain is required for the interaction with Rho small GTPases.,function:Adapter protein involved in asymmetrical cell division and cell polarization processes. Probably involved in formation of epithelial tight junctions. Association with PARD3 may prevent the interaction of PARD3 with F11R/JAM1, thereby preventing tight junction assembly. The PARD6-PARD3 complex links GTP-bound Rho small GTPases to atypical protein kinase C proteins.,similarity:Belongs to the PAR6 family.,similarity:Contains 1 OPR domain.,similarity:Contains 1 PDZ (DHR) domain.,similarity:Contains 1 pseudo-CRIB domain.,subunit:Interacts with PARD3. Interacts with GTP-bound forms of CDC42 and RAC1. Interacts with GTP-bound ARHQ/TC10. Interacts with MPP5 (By similarity). Interacts with the N-terminal part of PRKCI and
Subcellular Location :	Cytoplasm. Cell membrane . Cell junction, tight junction .
Expression :	Expressed in pancreas and in both adult and fetal kidney. Weakly expressed in placenta and lung. Not expressed in other tissues.
Sort :	11622
No4 :	1
Host :	Rabbit
Modifications :	Unmodified

Products Images



Western blot analysis of lysates from Jurkat cells, using PARD6B Antibody. The lane on the right is blocked with the synthesized peptide.