

**POTE-8 Polyclonal Antibody**

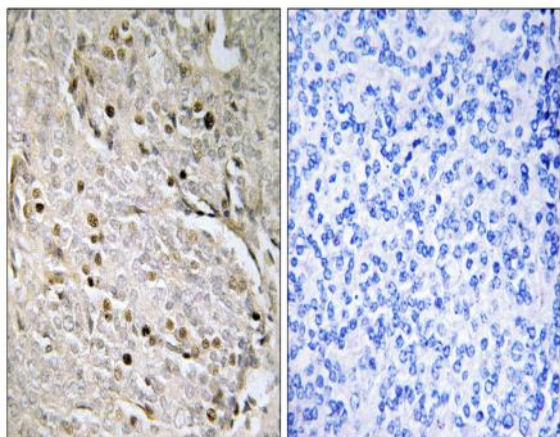
<b>Catalog No :</b>	YT3824
<b>Reactivity :</b>	Human
<b>Applications :</b>	IHC;IF;ELISA
<b>Target :</b>	POTE-8
<b>Gene Name :</b>	POTEA
<b>Protein Name :</b>	POTE ankyrin domain family member A
<b>Human Gene Id :</b>	340441
<b>Human Swiss Prot No :</b>	Q6S8J7
<b>Immunogen :</b>	The antiserum was produced against synthesized peptide derived from human POTEA. AA range:375-424
<b>Specificity :</b>	POTE-8 Polyclonal Antibody detects endogenous levels of POTE-8 protein.
<b>Formulation :</b>	Liquid in PBS containing 50% glycerol, 0.5% BSA and 0.02% sodium azide.
<b>Source :</b>	Polyclonal, Rabbit,IgG
<b>Dilution :</b>	IHC 1:100 - 1:300. ELISA: 1:5000.. IF 1:50-200
<b>Purification :</b>	The antibody was affinity-purified from rabbit antiserum by affinity-chromatography using epitope-specific immunogen.
<b>Concentration :</b>	1 mg/ml
<b>Storage Stability :</b>	-15°C to -25°C/1 year(Do not lower than -25°C)
<b>Molecularweight :</b>	56kD
<b>Background :</b>	similarity:Belongs to the POTE family.,similarity:Contains 5 ANK repeats.,

---

<b>Function :</b>	<u>similarity:Belongs to the POTE family.,similarity:Contains 5 ANK repeats.,</u>
<b>Expression :</b>	<u>Prostate,</u>
<b>Sort :</b>	<u>12911</u>
<b>No4 :</b>	<u>1</u>
<b>Host :</b>	<u>Rabbit</u>
<b>Modifications :</b>	<u>Unmodified</u>

---

## Products Images



Immunohistochemistry analysis of paraffin-embedded human prostate carcinoma, using POTE8 Antibody. The picture on the right is blocked with the synthesized peptide.