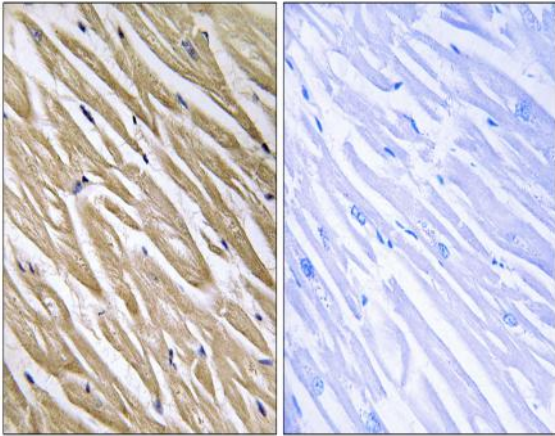


## P311 Polyclonal Antibody

<b>Catalog No :</b>	YT3509
<b>Reactivity :</b>	Human;Mouse;Rat
<b>Applications :</b>	IHC;IF;ELISA
<b>Target :</b>	P311
<b>Gene Name :</b>	NREP
<b>Protein Name :</b>	Neuronal regeneration-related protein
<b>Human Gene Id :</b>	9315
<b>Human Swiss Prot No :</b>	Q16612
<b>Mouse Gene Id :</b>	27528
<b>Mouse Swiss Prot No :</b>	Q07475
<b>Rat Gene Id :</b>	338475
<b>Rat Swiss Prot No :</b>	Q80Z34
<b>Immunogen :</b>	The antiserum was produced against synthesized peptide derived from human C5orf13. AA range:13-62
<b>Specificity :</b>	P311 Polyclonal Antibody detects endogenous levels of P311 protein.
<b>Formulation :</b>	Liquid in PBS containing 50% glycerol, 0.5% BSA and 0.02% sodium azide.
<b>Source :</b>	Polyclonal, Rabbit,IgG
<b>Dilution :</b>	IHC 1:100 - 1:300. ELISA: 1:40000.. IF 1:50-200
<b>Purification :</b>	The antibody was affinity-purified from rabbit antiserum by affinity-chromatography using epitope-specific immunogen.

<b>Concentration :</b>	1 mg/ml
<b>Storage Stability :</b>	-15°C to -25°C/1 year(Do not lower than -25°C)
<b>Molecularweight :</b>	8kD
<b>Background :</b>	<p>P311, also known as C5orf13 (chromosome 5 open reading frame 13), D4S114, PTZ17 or PRO1873, is a 68 amino acid cytoplasmic protein involved in cellular differentiation, neural function and axonal regeneration. Found in the granular layer of the cerebellum, P311 is expressed at lower levels in hippocampus, olfactory bulb, kidney, liver and heart and when expressed ectopically, P311 augments glioma motility. P311 is enriched in mice within the superficial cortical layers and striatum at E20 and the germinal zones at E17. Known to interact with Filamin 1, P311 regulates retinoic-acid lipid-droplet biogenesis, induces myofibroblast ameboid migration and the differentiation of fibroblasts into myofibroblasts. Ser-59 phosphorylation decreases P311 stability; the gene encoding P311 maps to human chromosome 5q22.</p>
<b>Function :</b>	regulation of transforming growth factor beta receptor signaling pathway,
<b>Subcellular Location :</b>	Cytoplasm .
<b>Expression :</b>	Expressed in lung (at protein level).
<b>Sort :</b>	11405
<b>No4 :</b>	1
<b>Host :</b>	Rabbit
<b>Modifications :</b>	Unmodified

## Products Images



Immunohistochemistry analysis of paraffin-embedded human heart tissue, using C5orf13 Antibody. The picture on the right is blocked with the synthesized peptide.