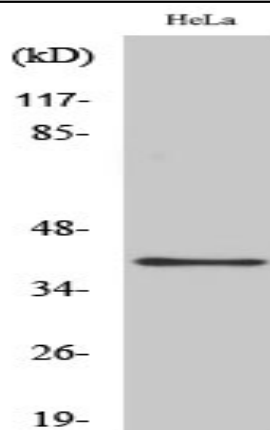


P2Y4 Polyclonal Antibody

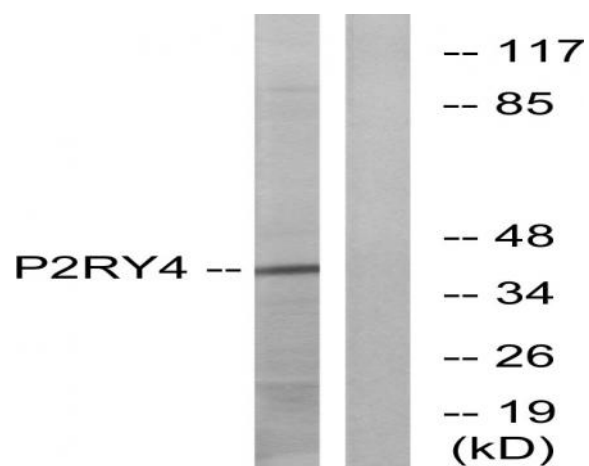
Catalog No :	YT3506
Reactivity :	Human;Mouse;Rat
Applications :	WB;IF;ELISA
Target :	P2Y4
Fields :	>>Neuroactive ligand-receptor interaction;>>Taste transduction
Gene Name :	P2RY4
Protein Name :	P2Y purinoceptor 4
Human Gene Id :	5030
Human Swiss Prot No :	P51582
Mouse Gene Id :	57385
Mouse Swiss Prot No :	Q9JJS7
Rat Gene Id :	63843
Rat Swiss Prot No :	O35811
Immunogen :	The antiserum was produced against synthesized peptide derived from human P2RY4. AA range:159-208
Specificity :	P2Y4 Polyclonal Antibody detects endogenous levels of P2Y4 protein.
Formulation :	Liquid in PBS containing 50% glycerol, 0.5% BSA and 0.02% sodium azide.
Source :	Polyclonal, Rabbit,IgG
Dilution :	WB 1:500 - 1:2000. IF 1:200 - 1:1000. ELISA: 1:10000. Not yet tested in other applications.

Purification :	The antibody was affinity-purified from rabbit antiserum by affinity-chromatography using epitope-specific immunogen.
Concentration :	1 mg/ml
Storage Stability :	-15°C to -25°C/1 year(Do not lower than -25°C)
Observed Band :	41kD
Cell Pathway :	Neuroactive ligand-receptor interaction;
Background :	The product of this gene belongs to the family of G-protein coupled receptors. This family has several receptor subtypes with different pharmacological selectivity, which overlaps in some cases, for various adenosine and uridine nucleotides. This receptor is responsive to uridine nucleotides, partially responsive to ATP, and not responsive to ADP. [provided by RefSeq, Jul 2008],
Function :	function:Receptor for UTP and UDP coupled to G-proteins that activate a phosphatidylinositol-calcium second messenger system. Not activated by ATP or ADP.,PTM:Phosphorylation of Ser-333 and Ser-334 is a key step in agonist-dependent desensitization and loss of surface P2RY4. This phosphorylation does not involve PKC, nor other calcium activated kinases.,similarity:Belongs to the G-protein coupled receptor 1 family.,tissue specificity:Pancreas.,
Subcellular Location :	Cell membrane; Multi-pass membrane protein.
Expression :	Pancreas.
Sort :	11395
No4 :	1
Host :	Rabbit
Modifications :	Unmodified

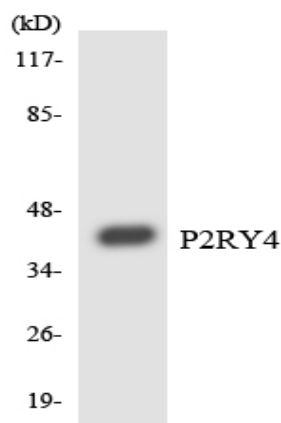
Products Images



Western Blot analysis of various cells using P2Y4 Polyclonal Antibody diluted at 1:500



Western blot analysis of lysates from HeLa cells, using P2RY4 Antibody. The lane on the right is blocked with the synthesized peptide.



Western blot analysis of the lysates from COLO205 cells using P2RY4 antibody.