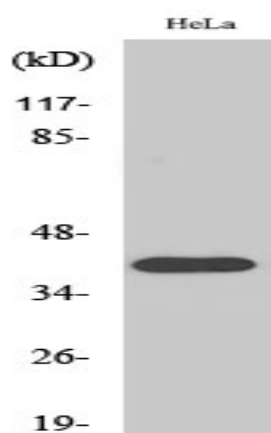


P2RY8 Polyclonal Antibody

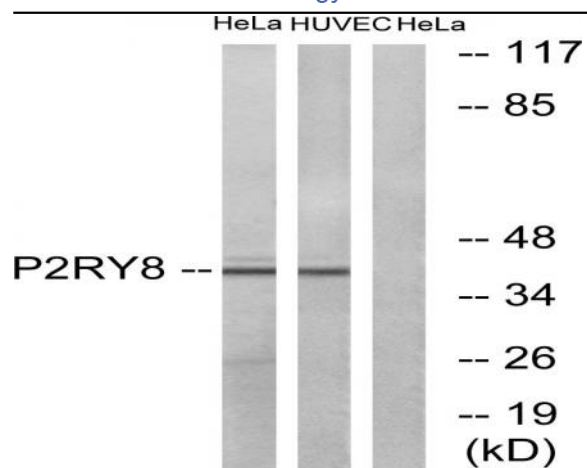
Catalog No :	YT3504
Reactivity :	Human
Applications :	WB;IF;ELISA
Target :	P2RY8
Fields :	>>Neuroactive ligand-receptor interaction
Gene Name :	P2RY8
Protein Name :	P2Y purinoceptor 8
Human Gene Id :	286530
Human Swiss Prot No :	Q86VZ1
Immunogen :	The antiserum was produced against synthesized peptide derived from human P2RY8. AA range:192-241
Specificity :	P2RY8 Polyclonal Antibody detects endogenous levels of P2RY8 protein.
Formulation :	Liquid in PBS containing 50% glycerol, 0.5% BSA and 0.02% sodium azide.
Source :	Polyclonal, Rabbit,IgG
Dilution :	WB 1:500 - 1:2000. IF 1:200 - 1:1000. ELISA: 1:20000. Not yet tested in other applications.
Purification :	The antibody was affinity-purified from rabbit antiserum by affinity-chromatography using epitope-specific immunogen.
Concentration :	1 mg/ml
Storage Stability :	-15°C to -25°C/1 year(Do not lower than -25°C)
Observed Band :	41kD

Cell Pathway :	Neuroactive ligand-receptor interaction;
Background :	purinergic receptor P2Y8(P2RY8) Homo sapiens The protein encoded by this gene belongs to the family of G-protein coupled receptors, that are preferentially activated by adenosine and uridine nucleotides. This gene is moderately expressed in undifferentiated HL60 cells, and is located on both chromosomes X and Y. [provided by RefSeq, Jul 2008],
Function :	function:Probable receptor for purines coupled to G-proteins.,induction:Down-regulated during granulocytic regulation.,miscellaneous:The gene encoding for this protein is located in the pseudoautosomal region 1 (PAR1) of X and Y chromosomes.,similarity:Belongs to the G-protein coupled receptor 1 family.,tissue specificity:Barely detectable in normal blood leukocytes. Weaker expression was seen in heart, kidney and lung. Not detected in brain.,
Subcellular Location :	Cell membrane; Multi-pass membrane protein.
Expression :	Barely detectable in normal blood leukocytes. Weaker expression was seen in heart, kidney and lung. Not detected in brain.
Sort :	11392
No4 :	1
Host :	Rabbit
Modifications :	Unmodified

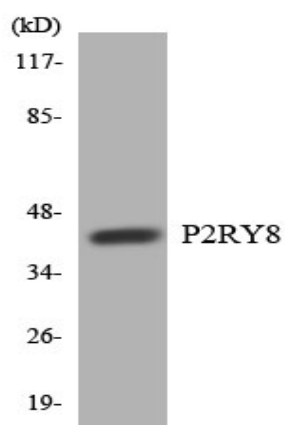
Products Images



Western Blot analysis of various cells using P2RY8 Polyclonal Antibody diluted at 1:2000



Western blot analysis of lysates from HeLa and HUVEC cells, using P2RY8 Antibody. The lane on the right is blocked with the synthesized peptide.



Western blot analysis of the lysates from COLO205 cells using P2RY8 antibody.