

**OY-TES-1 Polyclonal Antibody**

|                              |   |
|------------------------------|---|
| <b>Catalog No :</b>          | YT3483  |
| <b>Reactivity :</b>          | Human;Rat;Mouse;  |
| <b>Applications :</b>        | WB;IHC;IF;ELISA   |
| <b>Target :</b>              | OY-TES-1  |
| <b>Gene Name :</b>           | ACRBP   |
| <b>Protein Name :</b>        | Acrosin-binding protein   |
| <b>Human Gene Id :</b>       | 84519   |
| <b>Human Swiss Prot No :</b> | Q8NEB7  |
| <b>Mouse Swiss Prot No :</b> | Q3V140  |
| <b>Immunogen :</b>           | The antiserum was produced against synthesized peptide derived from human ACRBP. AA range:181-230                     |
| <b>Specificity :</b>         | OY-TES-1 Polyclonal Antibody detects endogenous levels of OY-TES-1 protein.   |
| <b>Formulation :</b>         | Liquid in PBS containing 50% glycerol, 0.5% BSA and 0.02% sodium azide.   |
| <b>Source :</b>              | Polyclonal, Rabbit,IgG  |
| <b>Dilution :</b>            | WB 1:500 - 1:2000. IHC 1:100 - 1:300. IF 1:200 - 1:1000. ELISA: 1:10000. Not yet tested in other applications.        |
| <b>Purification :</b>        | The antibody was affinity-purified from rabbit antiserum by affinity-chromatography using epitope-specific immunogen. |
| <b>Concentration :</b>       | 1 mg/ml   |
| <b>Storage Stability :</b>   | -15°C to -25°C/1 year(Do not lower than -25°C)  |
| <b>Observed Band :</b>       | 61kD  |

**Background :** The protein encoded by this gene is similar to proacrosin binding protein sp32 precursor found in mouse, guinea pig, and pig. This protein is located in the sperm acrosome and is thought to function as a binding protein to proacrosin for packaging and condensation of the acrosin zymogen in the acrosomal matrix. This protein is a member of the cancer/testis family of antigens and it is found to be immunogenic. In normal tissues, this mRNA is expressed only in testis, whereas it is detected in a range of different tumor types such as bladder, breast, lung, liver, and colon. [provided by RefSeq, Jul 2008],

**Function :** function:May be involved in packaging and condensation of the acrosin zymogen in the acrosomal matrix via its association with proacrosin.,PTM:Phosphorylated on Tyr residues in capacitated sperm.,PTM:The N-terminus is blocked.,subcellular location:Colocalizes with proacrosin in the acrosome of sperm.,subunit:Binds proacrosin.,tissue specificity:Expression restricted to testis in normal tissue. Expressed in a wide spectrum of cancers, including bladder, breast, liver, lung and colon cancers.,

**Subcellular Location :** Secreted . Cytoplasmic vesicle, secretory vesicle, acrosome .

**Expression :** Expression restricted to testis in normal tissue. Expressed in a wide spectrum of cancers, including bladder, breast, liver, lung and colon cancers.

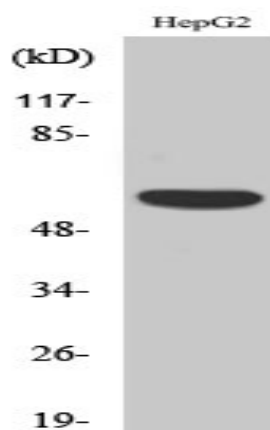
**Sort :** 11346

**No4 :** 1

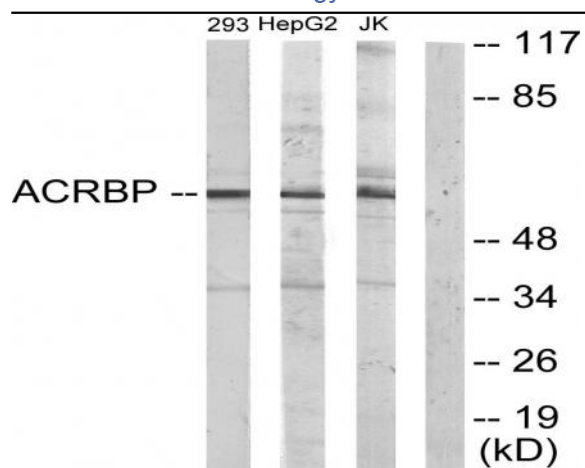
**Host :** Rabbit

**Modifications :** Unmodified

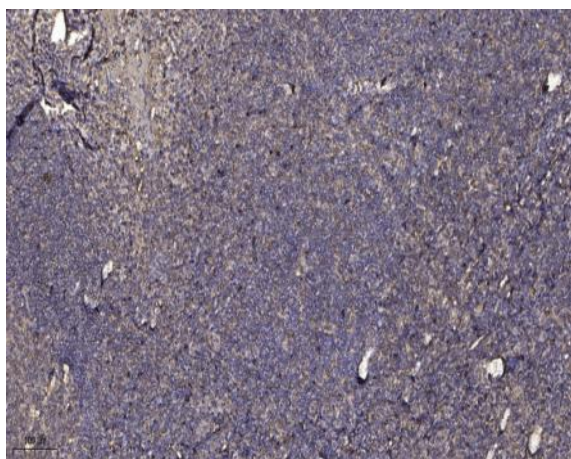
## Products Images



Western Blot analysis of various cells using OY-TES-1 Polyclonal Antibody



Western blot analysis of lysates from HepG2, Jurkat, and 293 cells, using ACRBP Antibody. The lane on the right is blocked with the synthesized peptide.



Immunohistochemical analysis of paraffin-embedded human tonsil. 1, Antibody was diluted at 1:200(4° overnight). 2, Tris-EDTA,pH9.0 was used for antigen retrieval. 3,Secondary antibody was diluted at 1:200(room temperature, 30min).