

**OXR1 Polyclonal Antibody**

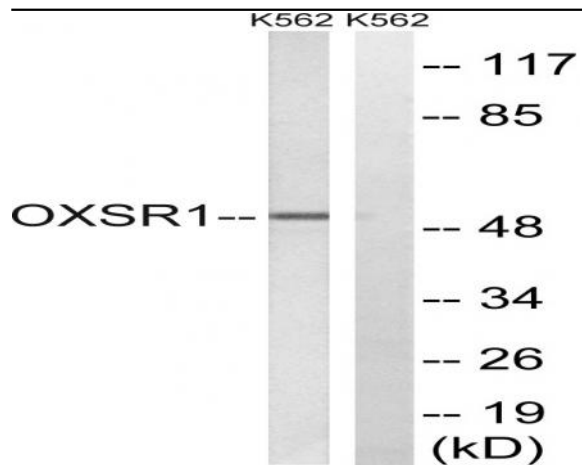
|                              |   |
|------------------------------|---|
| <b>Catalog No :</b>          | YT3482  |
| <b>Reactivity :</b>          | Human;Mouse   |
| <b>Applications :</b>        | WB;ELISA  |
| <b>Target :</b>              | OXR1  |
| <b>Gene Name :</b>           | OXR1  |
| <b>Protein Name :</b>        | Serine/threonine-protein kinase OSR1  |
| <b>Human Gene Id :</b>       | 9943  |
| <b>Human Swiss Prot No :</b> | O95747  |
| <b>Mouse Gene Id :</b>       | 108737  |
| <b>Mouse Swiss Prot No :</b> | Q6P9R2  |
| <b>Immunogen :</b>           | The antiserum was produced against synthesized peptide derived from human OXR1. AA range:272-321                      |
| <b>Specificity :</b>         | OXR1 Polyclonal Antibody detects endogenous levels of OXR1 protein.   |
| <b>Formulation :</b>         | Liquid in PBS containing 50% glycerol, 0.5% BSA and 0.02% sodium azide.   |
| <b>Source :</b>              | Polyclonal, Rabbit,IgG  |
| <b>Dilution :</b>            | WB 1:500 - 1:2000. ELISA: 1:40000. Not yet tested in other applications.  |
| <b>Purification :</b>        | The antibody was affinity-purified from rabbit antiserum by affinity-chromatography using epitope-specific immunogen. |
| <b>Concentration :</b>       | 1 mg/ml   |
| <b>Storage Stability :</b>   | -15°C to -25°C/1 year(Do not lower than -25°C)  |

---

|                               |  |
|-------------------------------|--|
| <b>Observed Band :</b>        | 50kD   |
| <b>Background :</b>           | The product of this gene belongs to the Ser/Thr protein kinase family of proteins. It regulates downstream kinases in response to environmental stress, and may play a role in regulating the actin cytoskeleton. [provided by RefSeq, Jul 2008],  |
| <b>Function :</b>             | catalytic activity:ATP + a protein = ADP + a phosphoprotein.,cofactor:Magnesium.,enzyme regulation:By autophosphorylation on threonine.,function:Regulates downstream kinases in response to environmental stress. May also have a function in regulating the actin cytoskeleton.,PTM:Phosphorylated upon DNA damage, probably by ATM or ATR.,similarity:Belongs to the protein kinase superfamily. STE Ser/Thr protein kinase family. STE20 subfamily.,similarity:Contains 1 protein kinase domain.,subunit:Binds to and phosphorylates PAK1. Interacts with chloride channel proteins SLC12A6 isoform 2, SLC12A1 and SLC12A2 but not with SLC12A4 and SLC12A7, possibly establishing sensor/signaling modules that initiate the cellular response to environmental stress. Binds to and phosphorylates RELL1, RELL2 AND RELT.,tissue specificity:Ubiquitously expressed in all tissue examined., |
| <b>Subcellular Location :</b> | Cytoplasm .  |
| <b>Expression :</b>           | Ubiquitously expressed in all tissue examined.   |
| <b>Sort :</b>                 | 11345  |
| <b>No4 :</b>                  | 1  |
| <b>Host :</b>                 | Rabbit   |
| <b>Modifications :</b>        | Unmodified   |

---

## Products Images



Western blot analysis of lysates from K562 cells, using OXSR1 Antibody. The lane on the right is blocked with the synthesized peptide.