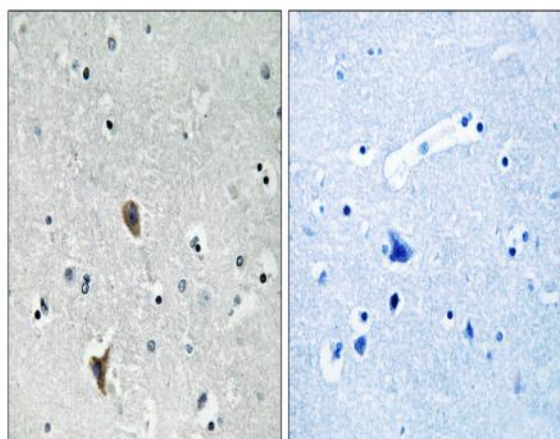


Oxr1 Polyclonal Antibody

Catalog No :	YT3481
Reactivity :	Human;Mouse;Rat
Applications :	WB;IHC;IF;ELISA
Target :	Oxr1
Gene Name :	OXR1
Protein Name :	Oxidation resistance protein 1
Human Gene Id :	55074
Human Swiss Prot No :	Q8N573
Mouse Gene Id :	170719
Mouse Swiss Prot No :	Q4KMM3
Rat Gene Id :	117520
Rat Swiss Prot No :	Q4V8B0
Immunogen :	The antiserum was produced against synthesized peptide derived from human OXR1. AA range:472-521
Specificity :	Oxr1 Polyclonal Antibody detects endogenous levels of Oxr1 protein.
Formulation :	Liquid in PBS containing 50% glycerol, 0.5% BSA and 0.02% sodium azide.
Source :	Polyclonal, Rabbit,IgG
Dilution :	WB 1:500 - 1:2000. IHC 1:100 - 1:300. ELISA: 1:40000.. IF 1:50-200
Purification :	The antibody was affinity-purified from rabbit antiserum by affinity-chromatography using epitope-specific immunogen.

Concentration :	1 mg/ml
Storage Stability :	-15°C to -25°C/1 year(Do not lower than -25°C)
Observed Band :	85kD
Background :	function:May be involved in protection from oxidative damage.,induction:By heat and oxidative stress.,PTM:Phosphorylated upon DNA damage, probably by ATM or ATR.,similarity:Belongs to the OXR1 family.,similarity:Contains 1 GRAM domain.,similarity:Contains 1 LysM repeat.,similarity:Contains 1 TLD domain.,
Function :	function:May be involved in protection from oxidative damage.,induction:By heat and oxidative stress.,PTM:Phosphorylated upon DNA damage, probably by ATM or ATR.,similarity:Belongs to the OXR1 family.,similarity:Contains 1 GRAM domain.,similarity:Contains 1 LysM repeat.,similarity:Contains 1 TLD domain.,
Subcellular Location :	Mitochondrion .
Expression :	Cerebellum,Embryo,Epithelium,Lymph,Lymph node,Mammary gland,Neuroblastoma,Prostate,
Sort :	11344
No4 :	1
Host :	Rabbit
Modifications :	Unmodified

Products Images



Immunohistochemistry analysis of paraffin-embedded human brain tissue, using OXR1 Antibody. The picture on the right is blocked with the synthesized peptide.