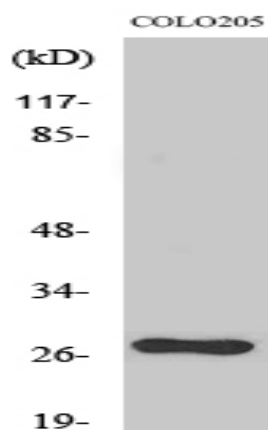


OTUB2 Polyclonal Antibody

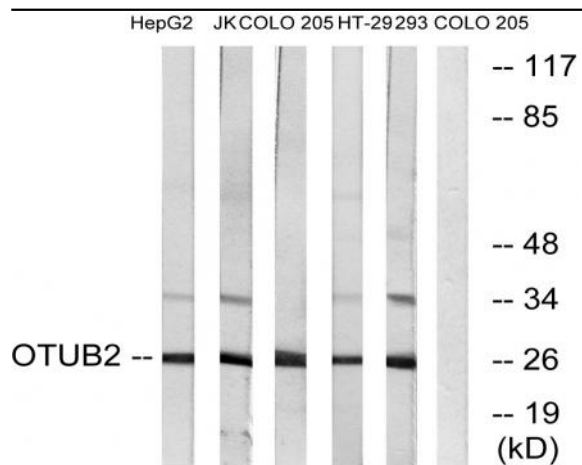
Catalog No :	YT3475
Reactivity :	Human;Mouse;Rat
Applications :	WB;IHC;IF;ELISA
Target :	OTUB2
Gene Name :	OTUB2
Protein Name :	Ubiquitin thioesterase OTUB2
Human Gene Id :	78990
Human Swiss Prot No :	Q96DC9
Mouse Gene Id :	68149
Mouse Swiss Prot No :	Q9CQX0
Immunogen :	The antiserum was produced against synthesized peptide derived from human OTUB2. AA range:133-182
Specificity :	OTUB2 Polyclonal Antibody detects endogenous levels of OTUB2 protein.
Formulation :	Liquid in PBS containing 50% glycerol, 0.5% BSA and 0.02% sodium azide.
Source :	Polyclonal, Rabbit,IgG
Dilution :	WB 1:500 - 1:2000. IHC 1:100 - 1:300. ELISA: 1:20000.. IF 1:50-200
Purification :	The antibody was affinity-purified from rabbit antiserum by affinity-chromatography using epitope-specific immunogen.
Concentration :	1 mg/ml
Storage Stability :	-15°C to -25°C/1 year(Do not lower than -25°C)

Observed Band : 27kD**Background :** OTU deubiquitinase, ubiquitin aldehyde binding 2(OTUB2) Homo sapiens This gene encodes one of several deubiquitylating enzymes. Ubiquitin modification of proteins is needed for their stability and function; to reverse the process, deubiquitylating enzymes remove ubiquitin. This protein contains an OTU domain and binds Ubal (ubiquitin aldehyde); an active cysteine protease site is present in the OTU domain. [provided by RefSeq, Aug 2011],**Function :** function:Hydrolase that can remove conjugated ubiquitin from proteins in vitro and may therefore play an important regulatory role at the level of protein turnover by preventing degradation.,similarity:Belongs to the peptidase C65 family.,similarity:Contains 1 OTU domain.,tissue specificity:Widely expressed. Expressed at higher level in brain.,**Subcellular Location :** nucleus,**Expression :** Widely expressed. Expressed at higher level in brain.**Tag :** hot**Sort :** 11330**No4 :** 1**Host :** Rabbit**Modifications :** Unmodified

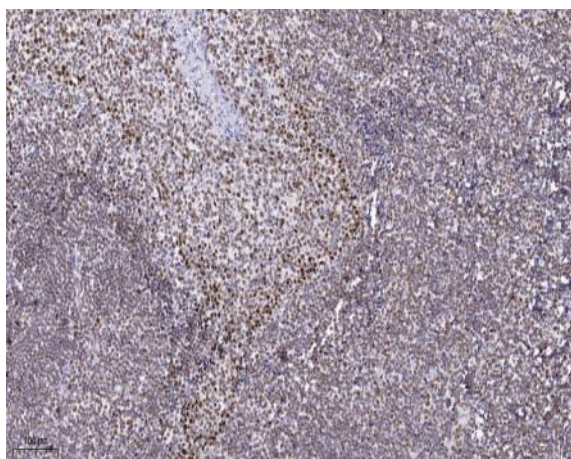
Products Images



Western Blot analysis of various cells using OTUB2 Polyclonal Antibody diluted at 1:2000



Western blot analysis of lysates from COLO, HepG2, Jurkat, 293, and HT-29 cells, using OTUB2 Antibody. The lane on the right is blocked with the synthesized peptide.



Immunohistochemical analysis of paraffin-embedded human tonsil. 1, Antibody was diluted at 1:200(4° overnight). 2, Tris-EDTA,pH9.0 was used for antigen retrieval. 3,Secondary antibody was diluted at 1:200(room temperature, 45min).