

## Orexin R-1 Polyclonal Antibody

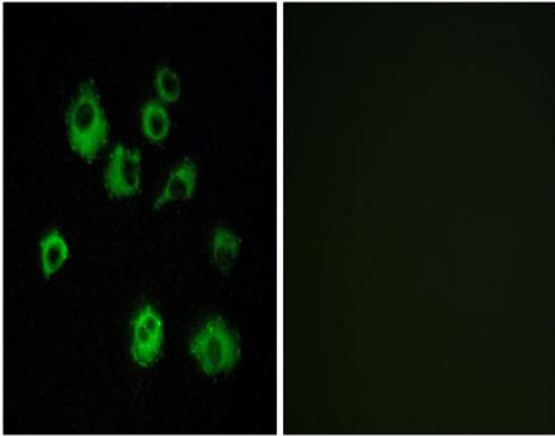
<b>Catalog No :</b>	YT3472
<b>Reactivity :</b>	Human;Mouse;Rat
<b>Applications :</b>	IF;ELISA
<b>Target :</b>	Orexin R-1
<b>Fields :</b>	>>Neuroactive ligand-receptor interaction
<b>Gene Name :</b>	HCRTR1
<b>Protein Name :</b>	Orexin receptor type 1
<b>Human Gene Id :</b>	3061
<b>Human Swiss Prot No :</b>	O43613
<b>Mouse Gene Id :</b>	230777
<b>Mouse Swiss Prot No :</b>	P58307
<b>Rat Gene Id :</b>	25593
<b>Rat Swiss Prot No :</b>	P56718
<b>Immunogen :</b>	The antiserum was produced against synthesized peptide derived from human HCRTR1. AA range:298-347
<b>Specificity :</b>	Orexin R-1 Polyclonal Antibody detects endogenous levels of Orexin R-1 protein.
<b>Formulation :</b>	Liquid in PBS containing 50% glycerol, 0.5% BSA and 0.02% sodium azide.
<b>Source :</b>	Polyclonal, Rabbit,IgG
<b>Dilution :</b>	IF 1:200 - 1:1000. ELISA: 1:20000. Not yet tested in other applications.

---

<b>Purification :</b>	The antibody was affinity-purified from rabbit antiserum by affinity-chromatography using epitope-specific immunogen.
<b>Concentration :</b>	1 mg/ml
<b>Storage Stability :</b>	-15°C to -25°C/1 year(Do not lower than -25°C)
<b>Molecularweight :</b>	48kD
<b>Cell Pathway :</b>	Neuroactive ligand-receptor interaction;
<b>Background :</b>	The protein encoded by this gene is a G-protein coupled receptor involved in the regulation of feeding behavior. The encoded protein selectively binds the hypothalamic neuropeptide orexin A. A related gene (HCRTR2) encodes a G-protein coupled receptor that binds orexin A and orexin B. [provided by RefSeq, Jan 2009],
<b>Function :</b>	function:Moderately selective excitatory receptor for orexin-A and, with a lower affinity, for orexin-B neuropeptide. Seems to be exclusively coupled to the G(q) subclass of heteromeric G proteins, which activates the phospholipase C mediated signaling cascade.,similarity:Belongs to the G-protein coupled receptor 1 family.,
<b>Subcellular Location :</b>	Cell membrane ; Multi-pass membrane protein .
<b>Expression :</b>	Brain,
<b>Sort :</b>	11317
<b>No4 :</b>	1
<b>Host :</b>	Rabbit
<b>Modifications :</b>	Unmodified

---

## Products Images



Immunofluorescence analysis of MCF7 cells, using HCRTR1 Antibody. The picture on the right is blocked with the synthesized peptide.