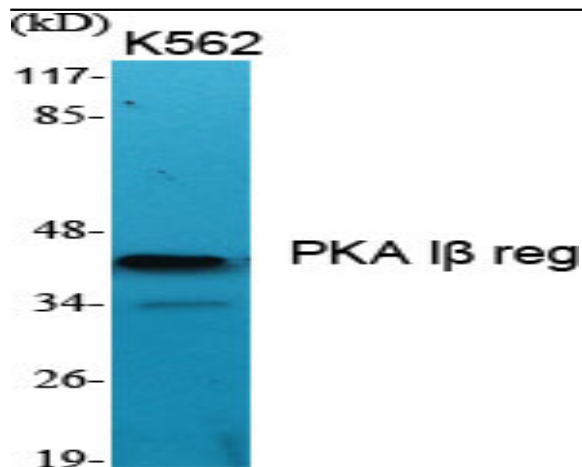


PKA I β reg Polyclonal Antibody

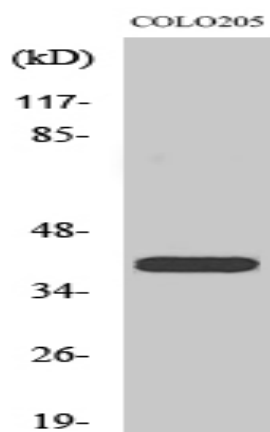
Catalog No :	YT3747
Reactivity :	Human;Mouse;Rat
Applications :	WB;IHC;IF;ELISA
Target :	PKA I β reg
Fields :	>>Insulin signaling pathway
Gene Name :	PRKAR1B
Protein Name :	cAMP-dependent protein kinase type I-beta regulatory subunit
Human Gene Id :	5575
Human Swiss Prot No :	P31321
Mouse Gene Id :	19085
Mouse Swiss Prot No :	P12849
Rat Swiss Prot No :	P81377
Immunogen :	The antiserum was produced against synthesized peptide derived from human KAP1. AA range:106-155
Specificity :	PKA I β reg Polyclonal Antibody detects endogenous levels of PKA I β reg protein.
Formulation :	Liquid in PBS containing 50% glycerol, 0.5% BSA and 0.02% sodium azide.
Source :	Polyclonal, Rabbit,IgG
Dilution :	WB 1:500 - 1:2000. IHC 1:100 - 1:300. ELISA: 1:20000.. IF 1:50-200
Purification :	The antibody was affinity-purified from rabbit antiserum by affinity-chromatography using epitope-specific immunogen.

Concentration :	1 mg/ml
Storage Stability :	-15°C to -25°C/1 year(Do not lower than -25°C)
Observed Band :	43kD
Cell Pathway :	Apoptosis_Inhibition;Apoptosis_Mitochondrial;Apoptosis_Overview;Insulin_Rec eptor;
Background :	The protein encoded by this gene is a regulatory subunit of cyclic AMP- dependent protein kinase A (PKA), which is involved in the signaling pathway of the second messenger cAMP. Two regulatory and two catalytic subunits form the PKA holoenzyme, disbands after cAMP binding. The holoenzyme is involved in many cellular events, including ion transport, metabolism, and transcription. Several transcript variants encoding the same protein have been found for this gene. [provided by RefSeq, Aug 2015],
Function :	PTM:The pseudophosphorylation site binds to the substrate-binding region of the catalytic chain, resulting in the inhibition of its activity.,similarity:Belongs to the cAMP-dependent kinase regulatory chain family.,similarity:Contains 2 cyclic nucleotide-binding domains.,subunit:The inactive form of the enzyme is composed of two regulatory chains and two catalytic chains. Activation by cAMP produces two active catalytic monomers and a regulatory dimer that binds four cAMP molecules.,tissue specificity:Four types of regulatory chains are found: I- alpha, I-beta, II-alpha, and II-beta. Their expression varies among tissues and is in some cases constitutive and in others inducible.,
Subcellular Location :	Cell membrane .
Expression :	Four types of regulatory chains are found: I-alpha, I-beta, II-alpha, and II-beta. Their expression varies among tissues and is in some cases constitutive and in others inducible.
Sort :	12732
No4 :	1
Host :	Rabbit
Modifications :	Unmodified

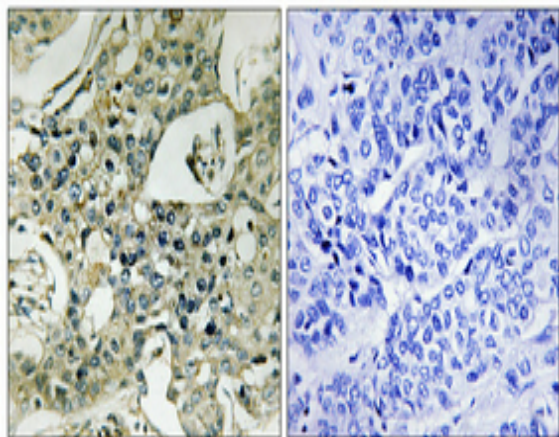
Products Images



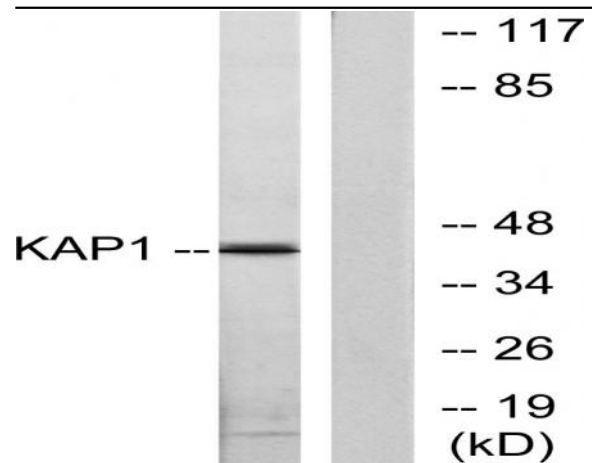
Western Blot analysis of various cells using PKA I β reg Polyclonal Antibody



Western Blot analysis of COLO205 cells using PKA I β reg Polyclonal Antibody



Immunohistochemical analysis of paraffin-embedded Human breast cancer. Antibody was diluted at 1:100(4° overnight). High-pressure and temperature Tris-EDTA, pH8.0 was used for antigen retrieval. Negative control (right) obtained from antibody was pre-absorbed by immunogen peptide.



Western blot analysis of lysates from COLO205 cells, using KAP1 Antibody. The lane on the right is blocked with the synthesized peptide.