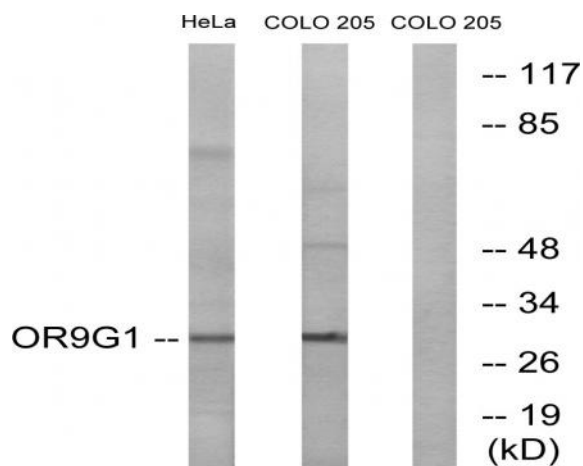


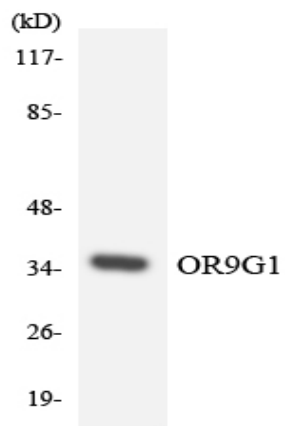
Olfactory receptor 9G1 Polyclonal Antibody

Catalog No :	YT3455
Reactivity :	Human
Applications :	WB;IF;ELISA
Target :	Olfactory receptor 9G1
Fields :	>>Olfactory transduction
Gene Name :	OR9G1
Protein Name :	Olfactory receptor 9G1
Human Gene Id :	390174/390174
Human Swiss Prot No :	Q8NH87/Q8NGQ0/Q6IEV0
Immunogen :	The antiserum was produced against synthesized peptide derived from human OR9G1. AA range:158-207
Specificity :	Olfactory receptor 9G1 Polyclonal Antibody detects endogenous levels of Olfactory receptor 9G1 protein.
Formulation :	Liquid in PBS containing 50% glycerol, 0.5% BSA and 0.02% sodium azide.
Source :	Polyclonal, Rabbit,IgG
Dilution :	WB 1:500 - 1:2000. IF 1:200 - 1:1000. ELISA: 1:10000. Not yet tested in other applications.
Purification :	The antibody was affinity-purified from rabbit antiserum by affinity-chromatography using epitope-specific immunogen.
Concentration :	1 mg/ml
Storage Stability :	-15°C to -25°C/1 year(Do not lower than -25°C)

Observed Band :	30kD
Cell Pathway :	Olfactory transduction;
Background :	<p>olfactory receptor family 9 subfamily G member 1(OR9G1) Homo sapiens Olfactory receptors interact with odorant molecules in the nose, to initiate a neuronal response that triggers the perception of a smell. The olfactory receptor proteins are members of a large family of G-protein-coupled receptors (GPCR) arising from single coding-exon genes. Olfactory receptors share a 7-transmembrane domain structure with many neurotransmitter and hormone receptors and are responsible for the recognition and G protein-mediated transduction of odorant signals. The olfactory receptor gene family is the largest in the genome. The nomenclature assigned to the olfactory receptor genes and proteins for this organism is independent of other organisms. [provided by RefSeq, Jul 2008],</p>
Function :	<p>function:Odorant receptor .,miscellaneous:The sequence shown here is derived from an EMBL/GenBank/DDBJ third party annotation (TPA) entry.,similarity:Belongs to the G-protein coupled receptor 1 family.,</p>
Subcellular Location :	Cell membrane; Multi-pass membrane protein.
Sort :	11284
No4 :	1
Host :	Rabbit
Modifications :	Unmodified

Products Images





Western blot analysis of the lysates from HeLa cells using OR9G1 antibody.