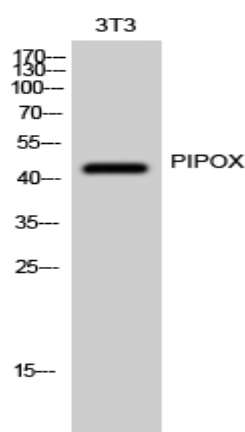


PIPOX Polyclonal Antibody

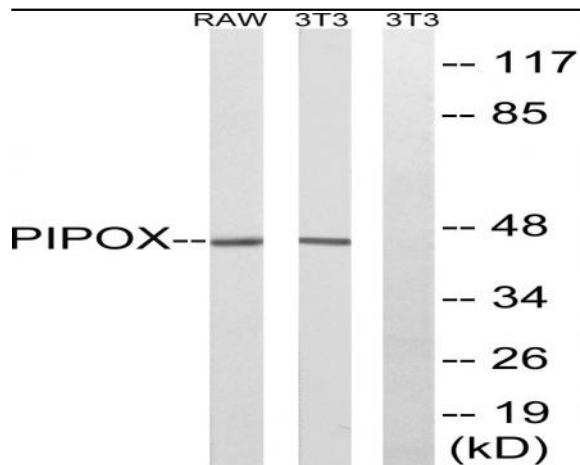
Catalog No :	YT3736
Reactivity :	Human;Rat;Mouse;
Applications :	WB;ELISA;IHC
Target :	PIPOX
Fields :	>>Glycine, serine and threonine metabolism;>>Lysine degradation;>>Metabolic pathways;>>Peroxisome
Gene Name :	PIPOX
Protein Name :	Peroxisomal sarcosine oxidase
Human Gene Id :	51268
Human Swiss Prot No :	Q9P0Z9
Mouse Swiss Prot No :	Q9D826
Immunogen :	The antiserum was produced against synthesized peptide derived from human PIPOX. AA range:257-306
Specificity :	PIPOX Polyclonal Antibody detects endogenous levels of PIPOX protein.
Formulation :	Liquid in PBS containing 50% glycerol, 0.5% BSA and 0.02% sodium azide.
Source :	Polyclonal, Rabbit,IgG
Dilution :	WB 1:500-2000;IHC 1:50-300; ELISA 2000-20000
Purification :	The antibody was affinity-purified from rabbit antiserum by affinity-chromatography using epitope-specific immunogen.
Concentration :	1 mg/ml
Storage Stability :	-15°C to -25°C/1 year(Do not lower than -25°C)

Observed Band :	44kD
Cell Pathway :	Glycine; serine and threonine metabolism;Lysine degradation;
Background :	catalytic activity:L-pipecolate + O(2) = 2,3,4,5-tetrahydropyridine-2-carboxylate + H(2)O(2).,catalytic activity:Sarcosine + H(2)O + O(2) = glycine + formaldehyde + H(2)O(2).,cofactor:Binds 1 FAD per subunit.,function:Metabolizes sarcosine, L-pipecolic acid and L-proline.,similarity:Belongs to the MSOX/MTOX family.,subunit:Monomer.,
Function :	catalytic activity:L-pipecolate + O(2) = 2,3,4,5-tetrahydropyridine-2-carboxylate + H(2)O(2).,catalytic activity:Sarcosine + H(2)O + O(2) = glycine + formaldehyde + H(2)O(2).,cofactor:Binds 1 FAD per subunit.,function:Metabolizes sarcosine, L-pipecolic acid and L-proline.,similarity:Belongs to the MSOX/MTOX family.,subunit:Monomer.,
Subcellular Location :	Peroxisome .
Expression :	Expressed in the liver and kidney.
Sort :	12717
No4 :	1
Host :	Rabbit
Modifications :	Unmodified

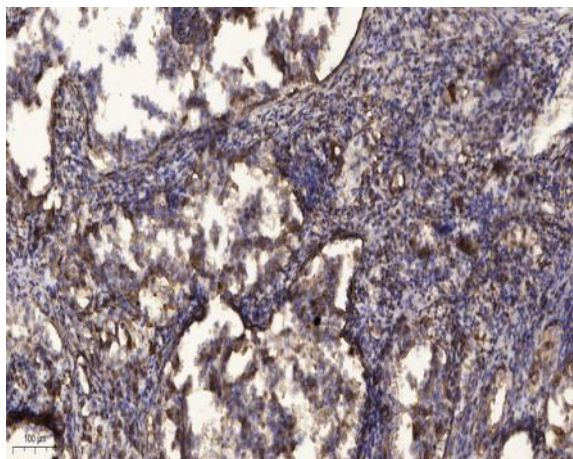
Products Images



Western Blot analysis of 3T3 cells using PIPOX Polyclonal Antibody



Western blot analysis of lysates from NIH/3T3 and RAW264.7 cells, using PIPOX Antibody. The lane on the right is blocked with the synthesized peptide.



Immunohistochemical analysis of paraffin-embedded human Squamous cell carcinoma of lung. 1, Antibody was diluted at 1:200(4° overnight). 2, Tris-EDTA,pH9.0 was used for antigen retrieval. 3,Secondary antibody was diluted at 1:200(room temperature, 45min).