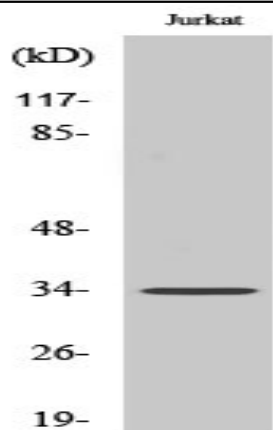


Olfactory receptor 8D1 Polyclonal Antibody

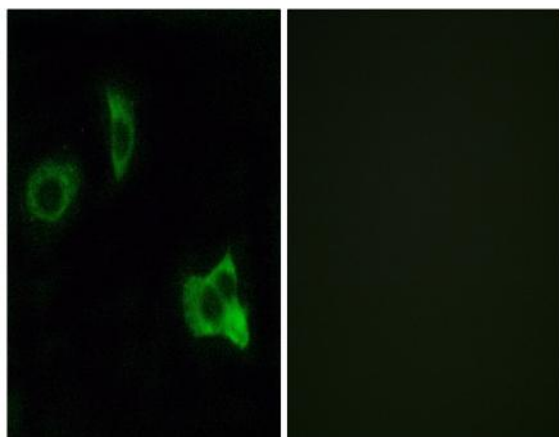
Catalog No :	YT3441
Reactivity :	Human
Applications :	WB;IF;ELISA
Target :	Olfactory receptor 8D1
Fields :	>>Olfactory transduction
Gene Name :	OR8D1
Protein Name :	Olfactory receptor 8D1
Human Gene Id :	283159
Human Swiss Prot No :	Q8WZ84
Immunogen :	The antiserum was produced against synthesized peptide derived from human OR8D1. AA range:234-283
Specificity :	Olfactory receptor 8D1 Polyclonal Antibody detects endogenous levels of Olfactory receptor 8D1 protein.
Formulation :	Liquid in PBS containing 50% glycerol, 0.5% BSA and 0.02% sodium azide.
Source :	Polyclonal, Rabbit,IgG
Dilution :	WB 1:500 - 1:2000. IF 1:200 - 1:1000. ELISA: 1:20000. Not yet tested in other applications.
Purification :	The antibody was affinity-purified from rabbit antiserum by affinity-chromatography using epitope-specific immunogen.
Concentration :	1 mg/ml
Storage Stability :	-15°C to -25°C/1 year(Do not lower than -25°C)

Observed Band :	34kD
Cell Pathway :	Olfactory transduction;
Background :	<p>olfactory receptor family 8 subfamily D member 1(OR8D1) Homo sapiens Olfactory receptors interact with odorant molecules in the nose, to initiate a neuronal response that triggers the perception of a smell. The olfactory receptor proteins are members of a large family of G-protein-coupled receptors (GPCR) arising from single coding-exon genes. Olfactory receptors share a 7-transmembrane domain structure with many neurotransmitter and hormone receptors and are responsible for the recognition and G protein-mediated transduction of odorant signals. The olfactory receptor gene family is the largest in the genome. The nomenclature assigned to the olfactory receptor genes and proteins for this organism is independent of other organisms. [provided by RefSeq, Jul 2008],</p>
Function :	<p>function:Odorant receptor (Potential). May be involved in taste perception.,similarity:Belongs to the G-protein coupled receptor 1 family.,tissue specificity:Expressed in the tongue.,</p>
Subcellular Location :	Cell membrane; Multi-pass membrane protein.
Expression :	Expressed in the tongue.
Sort :	11270
No4 :	1
Host :	Rabbit
Modifications :	Unmodified

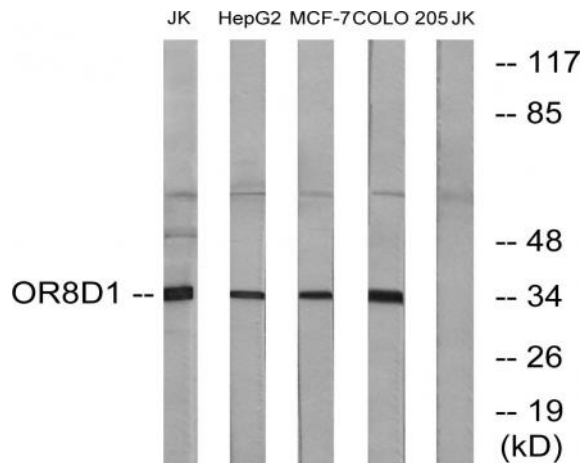
Products Images



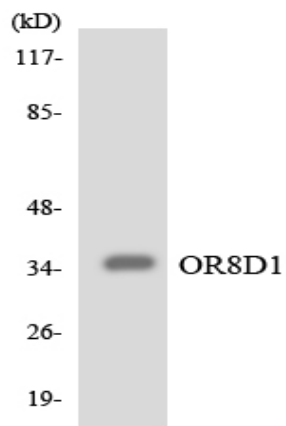
Western Blot analysis of various cells using Olfactory receptor 8D1 Polyclonal Antibody



Immunofluorescence analysis of MCF7 cells, using OR8D1 Antibody. The picture on the right is blocked with the synthesized peptide.



Western blot analysis of lysates from Jurkat, HepG2, MCF-7, and COLO cells, using OR8D1 Antibody. The lane on the right is blocked with the synthesized peptide.



Western blot analysis of the lysates from HUVEC cells using OR8D1 antibody.