

## PIG11 Polyclonal Antibody

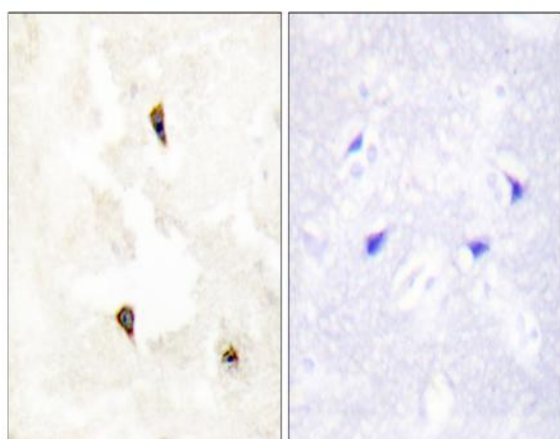
<b>Catalog No :</b>	YT3722
<b>Reactivity :</b>	Human;Rat;Mouse;
<b>Applications :</b>	WB;IHC;IF;ELISA
<b>Target :</b>	PIG11
<b>Gene Name :</b>	TP53I11
<b>Protein Name :</b>	Tumor protein p53-inducible protein 11
<b>Human Gene Id :</b>	9537
<b>Human Swiss Prot No :</b>	O14683
<b>Mouse Swiss Prot No :</b>	Q4QQM4
<b>Immunogen :</b>	The antiserum was produced against synthesized peptide derived from human TP53I11. AA range:71-120
<b>Specificity :</b>	PIG11 Polyclonal Antibody detects endogenous levels of PIG11 protein.
<b>Formulation :</b>	Liquid in PBS containing 50% glycerol, 0.5% BSA and 0.02% sodium azide.
<b>Source :</b>	Polyclonal, Rabbit,IgG
<b>Dilution :</b>	WB 1:500 - 1:2000. IHC 1:100 - 1:300. IF 1:200 - 1:1000. ELISA: 1:20000. Not yet tested in other applications.
<b>Purification :</b>	The antibody was affinity-purified from rabbit antiserum by affinity-chromatography using epitope-specific immunogen.
<b>Concentration :</b>	1 mg/ml
<b>Storage Stability :</b>	-15°C to -25°C/1 year(Do not lower than -25°C)
<b>Observed Band :</b>	18kD

<b>Background :</b>	TP53I11 (Tumor Protein P53 Inducible Protein 11) is a Protein Coding gene.
<b>Subcellular Location :</b>	Membrane ; Multi-pass membrane protein .
<b>Expression :</b>	Brain,Testis,Trachea,
<b>Sort :</b>	12692
<b>No4 :</b>	1
<b>Host :</b>	Rabbit
<b>Modifications :</b>	Unmodified

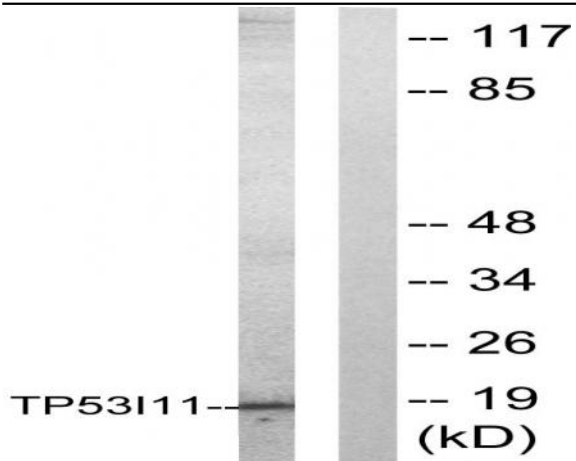
## Products Images



Western Blot analysis of various cells using PIG11 Polyclonal Antibody



Immunohistochemistry analysis of paraffin-embedded human breast carcinoma tissue, using TP53I11 Antibody. The picture on the right is blocked with the synthesized peptide.



Western blot analysis of lysates from HUVEC cells, using TP53I11 Antibody. The lane on the right is blocked with the synthesized peptide.