

PFK-2 liv/tes Polyclonal Antibody

| | |
|------------------------------|--|
| Catalog No : | YT3684 |
| Reactivity : | Human;Mouse;Rat |
| Applications : | WB;ELISA;IHC |
| Target : | PFK-2 liv/tes |
| Fields : | >>Fructose and mannose metabolism;>>Metabolic pathways;>>AMPK signaling pathway;>>Glucagon signaling pathway |
| Gene Name : | PFKFB1/PFKFB4 |
| Protein Name : | 6-phosphofructo-2-kinase/fructose-2,6-biphosphatase 1/4 |
| Human Gene Id : | 5207/5210 |
| Human Swiss Prot No : | P16118/Q16877 |
| Mouse Gene Id : | 18639/270198 |
| Rat Gene Id : | 24638/54283 |
| Rat Swiss Prot No : | P07953/P25114 |
| Immunogen : | The antiserum was produced against synthesized peptide derived from human PFKFB1/4. AA range:331-380 |
| Specificity : | PFK-2 liv/tes Polyclonal Antibody detects endogenous levels of PFK-2 liv/tes protein. |
| Formulation : | Liquid in PBS containing 50% glycerol, 0.5% BSA and 0.02% sodium azide. |
| Source : | Polyclonal, Rabbit,IgG |
| Dilution : | WB 1:500-2000;IHC 1:50-300; ELISA 2000-20000 |
| Purification : | The antibody was affinity-purified from rabbit antiserum by affinity- |

chromatography using epitope-specific immunogen.

Concentration : 1 mg/ml

Storage Stability : -15°C to -25°C/1 year(Do not lower than -25°C)

Observed Band : 54kD

Cell Pathway : Fructose and mannose metabolism;

Background : This gene encodes a member of the family of bifunctional 6-phosphofructo-2-kinase:fructose-2,6-biphosphatase enzymes. The enzyme forms a homodimer that catalyzes both the synthesis and degradation of fructose-2,6-biphosphate using independent catalytic domains. Fructose-2,6-biphosphate is an activator of the glycolysis pathway and an inhibitor of the gluconeogenesis pathway. Consequently, regulating fructose-2,6-biphosphate levels through the activity of this enzyme is thought to regulate glucose homeostasis. Multiple alternatively spliced transcript variants have been found for this gene. [provided by RefSeq, Nov 2012],

Function : catalytic activity:ATP + D-fructose 6-phosphate = ADP + beta-D-fructose 2,6-bisphosphate.,catalytic activity:Beta-D-fructose 2,6-bisphosphate + H(2)O = D-fructose 6-phosphate + phosphate.,enzyme regulation:Phosphorylation results in inhibition of the kinase activity.,function:Synthesis and degradation of fructose 2,6-bisphosphate.,similarity:In the C-terminal section; belongs to the phosphoglycerate mutase family.,subunit:Homodimer.,tissue specificity:Liver.,

Subcellular Location : cytosol,6-phosphofructo-2-kinase/fructose-2,6-biphosphatase complex,

Expression : Liver.

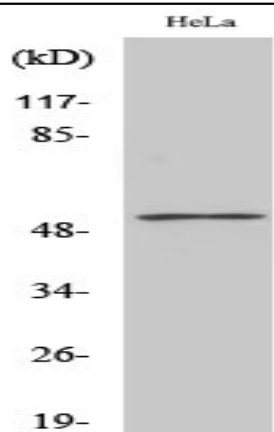
Sort : 11856

No4 : 1

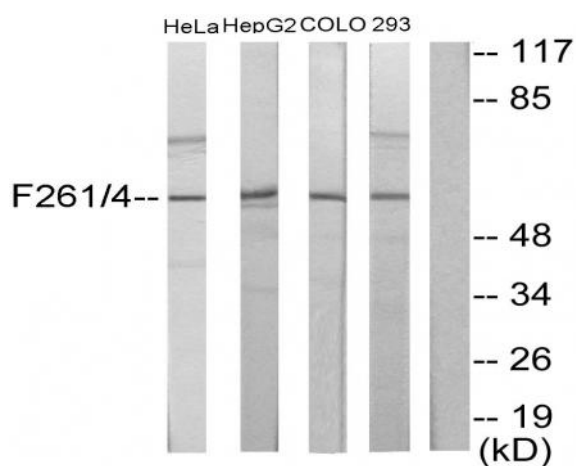
Host : Rabbit

Modifications : Unmodified

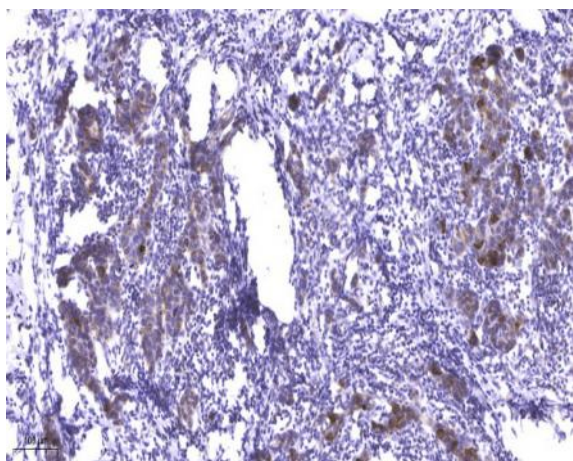
Products Images



Western Blot analysis of various cells using PFK-2 liv/tes Polyclonal Antibody



Western blot analysis of lysates from HeLa, HepG2, COLO205, and 293 cells, using PFKFB1/4 Antibody. The lane on the right is blocked with the synthesized peptide.



Immunohistochemical analysis of paraffin-embedded human Breast cancer. 1, Antibody was diluted at 1:200(4° overnight). 2, Tris-EDTA,pH9.0 was used for antigen retrieval. 3,Secondary antibody was diluted at 1:200(room temperature, 45min).