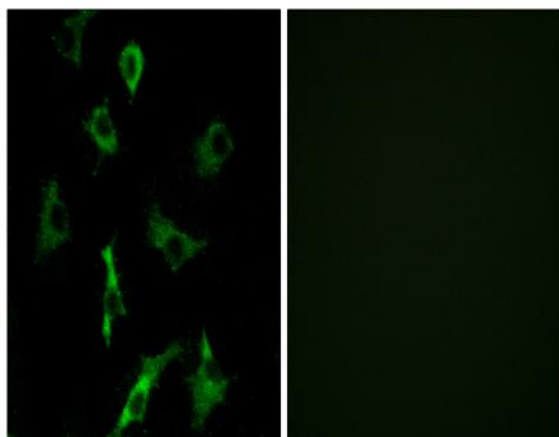


Olfactory receptor 5B3 Polyclonal Antibody

Catalog No :	YT3399
Reactivity :	Human
Applications :	IF;ELISA
Target :	Olfactory receptor 5B3
Fields :	>>Olfactory transduction
Gene Name :	OR5B3
Protein Name :	Olfactory receptor 5B3
Human Gene Id :	441608
Human Swiss Prot No :	Q8NH48
Immunogen :	The antiserum was produced against synthesized peptide derived from human OR5B3. AA range:157-206
Specificity :	Olfactory receptor 5B3 Polyclonal Antibody detects endogenous levels of Olfactory receptor 5B3 protein.
Formulation :	Liquid in PBS containing 50% glycerol, 0.5% BSA and 0.02% sodium azide.
Source :	Polyclonal, Rabbit,IgG
Dilution :	IF 1:200 - 1:1000. ELISA: 1:10000. Not yet tested in other applications.
Purification :	The antibody was affinity-purified from rabbit antiserum by affinity-chromatography using epitope-specific immunogen.
Concentration :	1 mg/ml
Storage Stability :	-15°C to -25°C/1 year(Do not lower than -25°C)
Molecularweight :	35kD

Cell Pathway :	Olfactory transduction;
Background :	olfactory receptor family 5 subfamily B member 3(OR5B3) Homo sapiens Olfactory receptors interact with odorant molecules in the nose, to initiate a neuronal response that triggers the perception of a smell. The olfactory receptor proteins are members of a large family of G-protein-coupled receptors (GPCR) arising from single coding-exon genes. Olfactory receptors share a 7-transmembrane domain structure with many neurotransmitter and hormone receptors and are responsible for the recognition and G protein-mediated transduction of odorant signals. The olfactory receptor gene family is the largest in the genome. The nomenclature assigned to the olfactory receptor genes and proteins for this organism is independent of other organisms. [provided by RefSeq, Jul 2008],
Function :	function:Odorant receptor .,similarity:Belongs to the G-protein coupled receptor 1 family.,
Subcellular Location :	Cell membrane; Multi-pass membrane protein.
Sort :	11228
No4 :	1
Host :	Rabbit
Modifications :	Unmodified

Products Images



Immunofluorescence analysis of COS7 cells, using OR5B3 Antibody. The picture on the right is blocked with the synthesized peptide.