

Peropsin Polyclonal Antibody

Catalog No :	YT3668
Reactivity :	Human
Applications :	WB;IHC;IF;ELISA
Target :	Peropsin
Gene Name :	RRH
Protein Name :	Visual pigment-like receptor peropsin
Human Gene Id :	10692
Human Swiss Prot No :	O14718
Mouse Swiss Prot No :	O35214
Immunogen :	The antiserum was produced against synthesized peptide derived from human RRH. AA range:201-250
Specificity :	Peropsin Polyclonal Antibody detects endogenous levels of Peropsin protein.
Formulation :	Liquid in PBS containing 50% glycerol, 0.5% BSA and 0.02% sodium azide.
Source :	Polyclonal, Rabbit,IgG
Dilution :	WB 1:500 - 1:2000. ELISA: 1:10000.. IF 1:50-200
Purification :	The antibody was affinity-purified from rabbit antiserum by affinity-chromatography using epitope-specific immunogen.
Concentration :	1 mg/ml
Storage Stability :	-15°C to -25°C/1 year(Do not lower than -25°C)
Observed Band :	37kD

Background : Opsins are members of the guanine nucleotide-binding protein (G protein)-coupled receptor superfamily. This gene belongs to the seven-exon subfamily of mammalian opsin genes that includes opsin 5 and retinal G protein coupled receptor. [provided by RefSeq, Jul 2008],

Function : function:May play a role in rpe physiology either by detecting light directly or by monitoring the concentration of retinoids or other photoreceptor-derived compounds.,similarity:Belongs to the G-protein coupled receptor 1 family. Opsin subfamily.,tissue specificity:Found only in the eye, where it is localized to the retinal pigment epithelium (RPE). In the RPE, it is localized to the microvilli that surround the photoreceptor outer segments.,

Subcellular Location : Membrane ; Multi-pass membrane protein .

Expression : Found only in the eye, where it is localized to the retinal pigment epithelium (RPE). In the RPE, it is localized to the microvilli that surround the photoreceptor outer segments.

Tag : hot

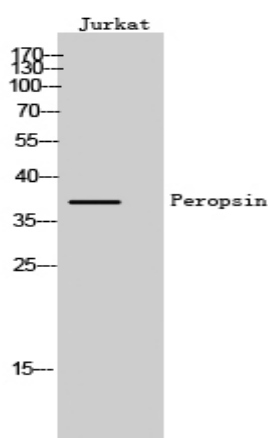
Sort : 11835

No4 : 1

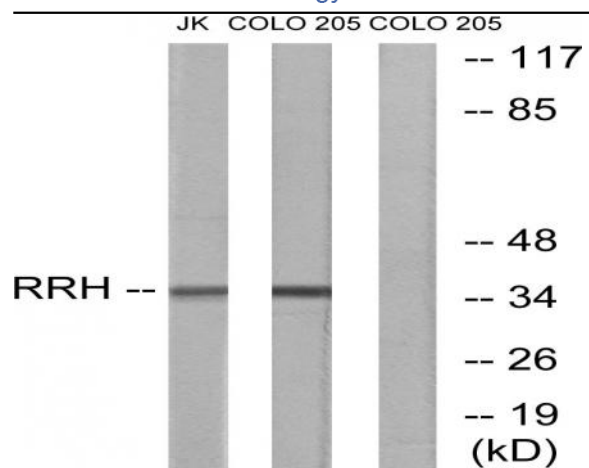
Host : Rabbit

Modifications : Unmodified

Products Images



Western Blot analysis of Jurkat cells using Peropsin Polyclonal Antibody



Western blot analysis of lysates from Jurkat and COLO cells, using RRH Antibody. The lane on the right is blocked with the synthesized peptide.