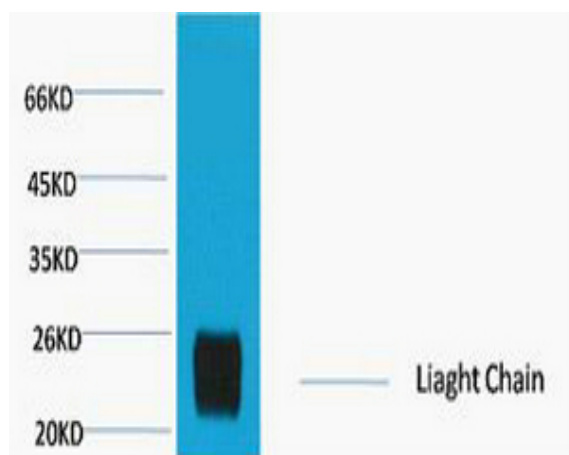


**Rabbit IgG (Light Chain Specific) Monoclonal Antibody(8D6)**

<b>Catalog No :</b>	YM3168
<b>Reactivity :</b>	Rabbit
<b>Applications :</b>	WB
<b>Target :</b>	Rabbit IgG (Light Chain Specific)
<b>Immunogen :</b>	Recombinant Protein of Rabbit IgG (Light Chain Specific)
<b>Specificity :</b>	The antibody reacts with the light chains on rabbit IgG and with those common to other rabbit immunoglobulins. The antibody does not react with the heavy chain of rabbit IgG. The antibody minimal cros
<b>Formulation :</b>	PBS, pH 7.4, containing 0.5%BSA, 0.02% sodium azide as Preservative and 50% Glycerol.
<b>Source :</b>	Monoclonal, Mouse
<b>Dilution :</b>	WB 1:2000-5000
<b>Purification :</b>	The antibody was affinity-purified from mouse ascites by affinity-chromatography using specific immunogen.
<b>Storage Stability :</b>	-15°C to -25°C/1 year(Do not lower than -25°C)
<b>Observed Band :</b>	25kD
<b>Background :</b>	Whole IgG antibodies are isolated as intact molecules from antisera by immunoaffinity chromatography. They have an Fc portion and two antigen binding Fab portions joined together by disulfide bonds and therefore they are divalent. The average molecular weight is reported to be about 160 kDa. The Light Chain Specific antibody reacts with light chain of IgG but not with the heavy chain of IgG.
<b>Tag :</b>	recombinant
<b>Sort :</b>	13724

<b>No4 :</b>	<u>1</u>
<b>Host :</b>	<u>Mouse</u>
<b>Modifications :</b>	<u>Unmodified</u>

## Products Images



Western blot analysis of Reduced Rabbit IgG, H+L, diluted at 1:10000.